

Product datasheet for **MR209504**

Cenpb (BC006628) Mouse Tagged ORF Clone

Product data:

Product Type:	Expression Plasmids
Product Name:	Cenpb (BC006628) Mouse Tagged ORF Clone
Tag:	Myc-DDK
Symbol:	Cenpb
Synonyms:	CENP-B
Vector:	pCMV6-Entry (PS100001)
E. coli Selection:	Kanamycin (25 ug/mL)
Cell Selection:	Neomycin



[View online »](#)

ORF Nucleotide Sequence:

>MR209504 representing BC006628
 Red=Cloning site Blue=ORF Green=Tags(s)

TTTTGTAATACGACTCACTATAGGGCGGCCGGAATTCGTCGACTGGATCCGGTACCGAGGAGATCTGCC
 GCC**CGGATCGCC**

ATGGGCCCAAGCGGCGGCAGCTGACGTTCCGGGAGAAGTCGCGGATCATCCAGGAGGTGGAGGAGAACC
 CGGACCTACGCAAGGGCGAGATCGCGCGCGCTTCAACATCCCGCGTCCACGCTGAGCACCATCTGAA
 GAACAAGCGCGCCATCTGGCGTCGAGCGCAAGTACGGAGTGGCCTCCACCTGCCGCAAGACCAACAAG
 CTGTCCCCGTACGACAAGCTGGAGGGGCTTCTCATCGCTTGGTTCCAGCAGATCCGCGCCGCCGGCTGC
 CGGTCAAGGGCATCATCTGAAAGAGAAGGCGCTGCGGATAGCGGAGGAGCTGGGCATGGACGACTTAC
 TGCTTCCAACGGCTGGCTGGATCGCTTCCGCAGGCGCCACGGTGTAGTGGCTGCAGCGGCTGACCCGT
 TCTCGGGCGGAAGCTCTGCCCTCGGGTCCAGCGGCACCTGCCGGCCAGCCACGGTGCCTCCGAGG
 GCAGCGGTGGGAGCACACCCGGTGGCACACGAGGGAGGAGCAGCCGCCGTCGGTAGCTGAGGGCTACGC
 CTCGACGAGCTGTTAGCGCCACCGAGACCAGCTGTGGTACGACTTTCTGTCGGACCAGCGCTCAGGG
 CTCTGGGAGGTGATGGACCGGCGGCCAGGCCACCCAGCGCCTTAGCGTTTTGCTGTGCGCCAACGCCG
 ATGGCAGCGAGAAGCTTCCCCACTGGTCGCAGGCAAATCTGCCAAGCCCCGTGCAGGGCAAGGTGGTCT
 GCCCTGCGACTACACTGCCAACTCGAAGGGTGGAGTACCACCCAGGCTCTGGCTAAGTACTTGAAGCT
 CTGGACACTCGAATGGCAGCAGAATCTCGTCGGGTCTTCTGCTGGCCGGCCGCTGGCTGCCAGTCTCT
 TGGACACTCGGGCTGCGGCACGTGCAGCTGGCTTCTCCCTCCTGGCACCGTGCATCCTTTGGAGCG
 AGGAGTGGTCCAACAGGTGAAGGGCCACTACGCCAGGCGATGTTGCTCAAGGCCATGGCAGCACTCGAG
 GGCCAGGATCCCTCAGGCTTGAACCTGGGCTTGTGGAGGCCCTGCACTTTGTGGCTGCAGCTGGCAGG
 CAGTGGAGCCCTCGGACATAGCAACTTGTCTTCTGAGGCGGTTTTGGAGGTGGCCTTAATGCCACTAT
 CACCATTCTTCAAGAGTGAGGGAGGGAAGAGGAGGAAGAGGAGGAGGAAGAAGAGGAGGAGGAGGAA
 GAGGAGGTTGAAGGGGAAGAGGAGGAGGAAGAGGAAGAAGAGGGGAGGAGGAAGGAGGGGAAGGAGAGG
 AGGAAGGAGAGGAAGAGGTAGAAGAGGAAGGTGAGGTTGATGATAGTGAAGAGGAGGAAGAAAGTTC
 CTCTGAGGTTTTAGAGGCTGAAGACTGGGCCAGGGAGTGTGGAAGCCAGTGGTGGTTTTGGGGTTAT
 AGTGTCCAGGAAGAGGCCAGTCCCCACTCTCCATTTCTGGAAGGAGGAGGACTCTGACTCAGACA
 GTGATGAAGAGGAGGACGATGAAGAGGAGGATGAGGAGGATGAAGATGAGGAGGATGATGAGGATGGTGA
 TGAGGTCCTGTGCCAGCTTTGGGAGGCCATGGCTTACTTTGCCATGGTCAAGAGGTACCTGACCTCC
 TTCCCATCGATACCGAGTGCAGAGTACATCCTTCATTTGGAACACGATCTGGTCCACGTGACTAGGA
 AGAACCGAGCCTGCCTCTGCCTGCTTCCACCTCCCAGATCCCTTTCTGTGCCAGTCTTTGGCCCTT
 GTTTTCTTCCAGATTGGAGGTTTCCAGGAGGCCCTCCAGGGGCG

ACGCGTACGCGGCCGCTCGAGCAGAACTCATCTCAGAAGAGGATCTGGCAGCAAATGATATCCTGGATT
 ACAAGGATGACGACGATAAGGTTTAA

Protein Sequence:

>MR209504 representing BC006628
 Red=Cloning site Green=Tags(s)

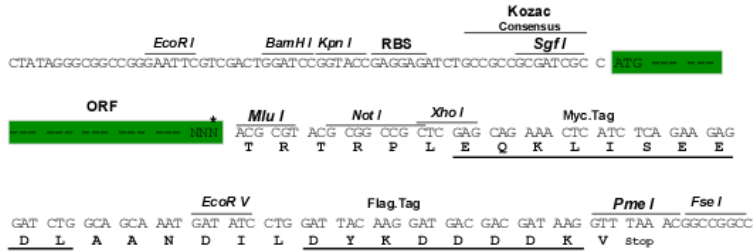
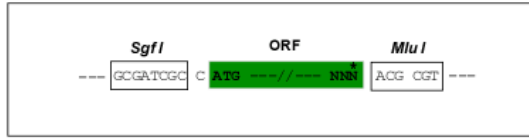
MGPKRRQLTFREKSRIIQEVEENPDLRKGIEARRFNIPPSTLSTILKNKRAILASERKYGVASTCRKTNK
 LSPYDKLEGLLI AWFQQIRAAGLPVKGIILKEKALRIAEELGMDDFTASNGWLD RFRRRHGVVACSGVTR
 SRARSSAPRAPAAPAGPATVPSESGGSGTPGWHTREEQPPSVAEGYASQDVFSATETSLWYDFLSDQASG
 LWGGDGPARGATQRLSVLLCANADGSEKLPPLVAGKSAKPRAGQGGLPCDYTANSKGGVTTQALAKYLKA
 LDTRMAAESRRVLLLAGRLAAQSLDTSGLRHVQLAFFPPGTVHPLERGVVQVKGHYRQAMLLKAMAAL
 EQDPSGLQLGLVEALHFVAAAWQAVEPSDIATCFREAGFGGGLNATITTSFKSEGESEEEEEEEEEEEEE
 EEEGEEEEEEEEEEEEEGGEEEEEEEEVEEEVEEVEEVEEVEEVEEVEEVEEVEEVEEVEEVEEVEEVEE
 SVQEEAQFPTLHFLEGGEDSDSDSEEEDEEEDDEEDEDDEDEDGDEVVPSFGEAMAYFAMVKRYLTS
 FPIDDRVQSHILHLEHDLVHVTRKNRACLLSTSPDPFLWPSLWPLVFFPDWRFPGGPPGA

TRTRPLEQKLISEEDLAANDILDYKDDDDDKV

Restriction Sites: SgfI-MluI

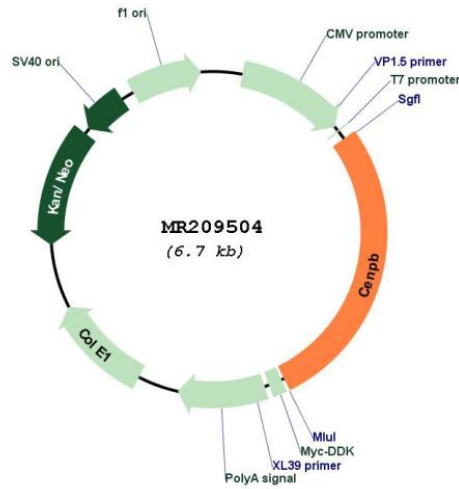
Cloning Scheme:

Cloning sites used for ORF Shuttling:



* The last codon before the Stop codon of the ORF

Plasmid Map:



ACCN: BC006628

ORF Size: 1866 bp

OTI Disclaimer:	The molecular sequence of this clone aligns with the gene accession number as a point of reference only. However, individual transcript sequences of the same gene can differ through naturally occurring variations (e.g. polymorphisms), each with its own valid existence. This clone is substantially in agreement with the reference, but a complete review of all prevailing variants is recommended prior to use. More info
OTI Annotation:	This clone was engineered to express the complete ORF with an expression tag. Expression varies depending on the nature of the gene.
Components:	The ORF clone is ion-exchange column purified and shipped in a 2D barcoded Matrix tube containing 10ug of transfection-ready, dried plasmid DNA (reconstitute with 100 ul of water).
Reconstitution Method:	<ol style="list-style-type: none">1. Centrifuge at 5,000xg for 5min.2. Carefully open the tube and add 100ul of sterile water to dissolve the DNA.3. Close the tube and incubate for 10 minutes at room temperature.4. Briefly vortex the tube and then do a quick spin (less than 5000xg) to concentrate the liquid at the bottom.5. Store the suspended plasmid at -20°C. The DNA is stable for at least one year from date of shipping when stored at -20°C.
RefSeq:	BC006628.1
RefSeq Size:	2090 bp
RefSeq ORF:	1868 bp
Locus ID:	12616
Cytogenetics:	2 63.29 cM
MW:	76.6 kDa
Gene Summary:	Interacts with centromeric heterochromatin in chromosomes and binds to a specific 17 bp subset of alphoid satellite DNA, called the CENP-B box. May organize arrays of centromere satellite DNA into a higher-order structure which then directs centromere formation and kinetochore assembly in mammalian chromosomes.[UniProtKB/Swiss-Prot Function]