

Product datasheet for **MR209444**

Maged2 (NM_030700) Mouse Tagged ORF Clone

Product data:

Product Type:	Expression Plasmids
Product Name:	Maged2 (NM_030700) Mouse Tagged ORF Clone
Tag:	Myc-DDK
Symbol:	Maged2
Synonyms:	4833439A22Rik; Mage-d2; ORF1
Mammalian Cell Selection:	Neomycin
Vector:	pCMV6-Entry (PS100001)
E. coli Selection:	Kanamycin (25 ug/mL)



[View online »](#)

ORF Nucleotide Sequence:

>MR209444 ORF sequence
 Red=Cloning site Blue=ORF Green=Tags(s)

TTTTGTAATACGACTCACTATAGGGCGGCCGGAATTCGTCGACTGGATCCGGTACCGAGGAGATCTGCC
 GCC**CGGATCGCC**

ATGCTGACACAAGCGAGAGTGGTGCAGATCCAGCTCGCTCTCAGGGCAAAGCTTCAGAAAAGGACAGCG
 GCTCCGTGATGCAGGACCTGTTGACCGTGACCCAGAACTTGGAGGTCTCAGAAAACACAAAGGCAGAAAA
 GGCACCAGAGTTTCAGAGGCTGCAAAGGCTCCAAAAGCCTCTGGGAACCCAAAGGCGACAGAGGTCTCA
 AAGGCCCCAGAGGCGTCTGAGGCAGCTGCCACCCAGGCCTCACCTACCACACAGCTGAGTGAGACCCAAG
 TTCTGGCAACTGAAAACAAGAGTCCAGCAGCTGACACCAAGACGCAGAAGTCTGACCTGCAGGCTATGAC
 AATGCCTACAACCCCGACCAAAAAGGTCAAGTGTGGTACCGATCCAAAGGTCAATACAAAGGCTCCGGAG
 ACTGAGGCTCCTGCCTCTCAGGCTGGGACAGATGAACCAGAGCCTGAGGGTACAGCTGTCCAGGTTCAGG
 AGAACCAGGATACTCGGCCAAGGTCAAAGCCAAGAATACCCAAAAGGGGAAACACCCGGATGGAGAAGA
 GGATGGCAACAGTGACCAGAGTCAAGGCTTCAAGGCCACAGGTGGTCAAGGGTCTCAAAGGCCCTAATG
 GCCTCCATGGCTCGCAGAGCTTCAAGGGGACCCATAGCCTTTTGGGCCCGCAGGGCATCAAGGACTCGGT
 TGGCTGCCTGGGCTCGGAGAGCTTTGCTCTCCCTGAGGTACCTAGAGCTCGCAGAGGCAAGGCCCGAAG
 AAGAGCTGCGAAGCTACAGTCAATCCAGGAACCTGAGGCACCCCAAGGAGATGTGGCCCTTTTACAA
 GGAAGGGCAATGACTTGGTGAAGTACCTGTTGGCTAAAGACCAGACAAAGATCCCATCAGACGCTCAG
 ATATGCTGAAGGACATCATCAAAGAATACTGATGTATACCCTGAAATCATTGAACGAGCAGGCTATTC
 CTTGGAGAAGGATTTTGGAAATCCAATTGAAAGAAATTGACAAGAATGACCACTTGATATTTCTTCTCAGT
 ACCTTAGAGCCAAGTATGCAGGCATATTGGGAACGACCAAGGACTCACCTAAGCTGGGCTCCTCATGG
 TGCTTCTTAGCATCATCTTCATGAATGGAATCGGTCCAGTGAAGGCTGTCATCTGGGAGGTGCTGCGCAA
 GTTGGGGCTGCGCCCTGGGATTCATCACTCACTCTTTGGAGATGTGAAGAACTCATTACTGATGAGTTT
 GTGAAGCAGAAGTACCTGGACTATGCCAGAGTACCCAATAGCAATCCTCCTGAGTACGAGTTCTTCTGGG
 GCCTACGCTCTTACTATGAGACCAGCAAGATGAAAGTTCTCAAGTTTGTGTAAGGTGCAAAAAGAAGGA
 TCCCAAGGAATGGGCAGCTCAGTACCGAGAGGCAATGGAAGCAGATTTGAAGGCTGCAGCTGAGGCTGCT
 GCCGAAGCCAAGGCGAGGCTGAGATTAGAGCTCAGATGGGCATTGGGCTTGGCTCTGAGAATGCCGCTG
 GGCCCTGCAACTGGGACGAAGCTGATATTGACCCTGGGCAAAGGCCCGGATCCAGGCAGGAGCTGAAAC
 TAAAGCCAAGGCCAAGGAAGTGGTGGTCCAATGCCAGTCTGGTCCCGGTGCCAGTACTGGTACCAGT
 GTTGGTCCAGTGGCAGTCCAGTCTGGTGGCAGTCTGGTCCAGTGGTGGCTTCAGTACAACCTCCA
 GCCTGACTGCCAGTCTCACATTTGGGCTCTTCGCTGGCCTTAGTGAGGCTGGGGCCAGTACCAACAGCAG
 CTCTGGTGCCTGTGGTTTCTCTACAAG

ACGCGTACGCGGCCGCTCGAGCAGAACTCATCTCAGAAGAGGATCTGGCAGCAAATGATATCCTGGATT
 ACAAGGATGACGACGATAAGGTTTAA

Protein Sequence:

>MR209444 protein sequence
 Red=Cloning site Green=Tags(s)

MSDTSSESGADPARSQGKASEKDSGSMQDLLTVTQNLEVSETPKAEKAPEVSEAAKAPKASGNPKATEVS
 KAPEASEAAATQASPTTQLSETQVLATENKSPAADTKTKQSDLQAMTPTTPTKKVSCGTDPKVNTKAPE
 TEAPASQAGTDEPEPEGTAVQVQENQDTRPKVKAKNTQKKGHPDGEEDGNSDQSQAASEATGGRRVSKALM
 ASMARRASRGPIAFWARRASRRLAAWARRALLSLRSPRARRGKARRRAAKLQSSQEPEAPPRDVALLQ
 GRANDLVKYLAKDQTKIPIRRSDMLKDIKEYTDVYPEI IERAGYSLEKVFQIQLKEIDKNDHLYILLS
 TLEPTDAGILGTTKDSPLGLLMVLLSIIIFMNGNRSSEAVIWEVLRKLGRLRPGIHHSLFGDVKLLITDEF
 VKQKYL DYARVPNSNPPEYEFFWGLRSYYETSMMKVLKFAKVQKDPKEWAAQYREAMEADLKAEEAA
 AEAKARAEIRAQMIGLGSENAAGPCNWEADIGPWAKARIQAGAETKAKAQGSGGANASAGAGASTGTS
 VGASGSASAGASAGSGGFNNSSLTASLTFGLFAGLSGAGASTNSSSGACGFSYK

TRTRPLEQKLISEEDLAANDILDYKDDDDKV

Restriction Sites: SgfI-MluI

Cloning Scheme:



ACCN: NM_030700

ORF Size: 1851 bp

OTI Disclaimer: The molecular sequence of this clone aligns with the gene accession number as a point of reference only. However, individual transcript sequences of the same gene can differ through naturally occurring variations (e.g. polymorphisms), each with its own valid existence. This clone is substantially in agreement with the reference, but a complete review of all prevailing variants is recommended prior to use. [More info](#)

OTI Annotation: This clone was engineered to express the complete ORF with an expression tag. Expression varies depending on the nature of the gene.

Components: The ORF clone is ion-exchange column purified and shipped in a 2D barcoded Matrix tube containing 10ug of transfection-ready, dried plasmid DNA (reconstitute with 100 ul of water).

- Reconstitution Method:**
1. Centrifuge at 5,000xg for 5min.
 2. Carefully open the tube and add 100ul of sterile water to dissolve the DNA.
 3. Close the tube and incubate for 10 minutes at room temperature.
 4. Briefly vortex the tube and then do a quick spin (less than 5000xg) to concentrate the liquid at the bottom.
 5. Store the suspended plasmid at -20°C. The DNA is stable for at least one year from date of shipping when stored at -20°C.

RefSeq: [NM_030700.3](#)

RefSeq Size: 2126 bp

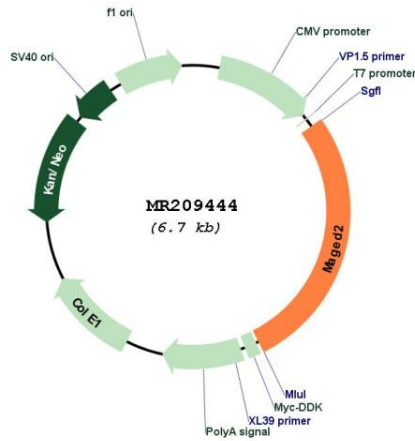
RefSeq ORF: 1851 bp

Locus ID: 80884

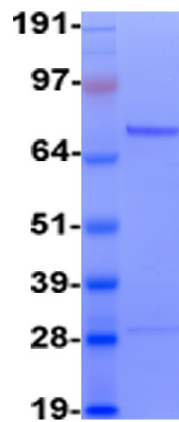
Cytogenetics: X F3

MW: 65.4 kDa

Product images:



Circular map for MR209444



Coomassie blue staining of purified Maged2 protein (Cat# [TP509444]). The protein was produced from HEK293T cells transfected with Maged2 cDNA clone (Cat# MR209444) using MegaTran 2.0 (Cat# [TT210002]).