

Product datasheet for **MR209388**

Tdp1 (NM_028354) Mouse Tagged ORF Clone

Product data:

Product Type:	Expression Plasmids
Product Name:	Tdp1 (NM_028354) Mouse Tagged ORF Clone
Tag:	Myc-DDK
Symbol:	Tdp1
Synonyms:	2810481F14Rik; 4921509N21Rik; A1838772; AW493413; E430034L06Rik; MLZ-501; SCAN1
Mammalian Cell Selection:	Neomycin
Vector:	pCMV6-Entry (PS100001)
E. coli Selection:	Kanamycin (25 ug/mL)



[View online »](#)

ORF Nucleotide Sequence:

>MR209388 ORF sequence
 Red=Cloning site Blue=ORF Green=Tags(s)

TTTTGTAATACGACTCACTATAGGGCGGCCGGAATTCGTCGACTGGATCCGGTACCGAGGAGATCTGCC
 GCC**CGCATCGCC**

ATGTCCCAAGAAAGCAGCTACGGGAAGTGGACAATATCCAGTAGTGACGAAAGCGAGGATGAGAAGCCCA
 AACCTGATAAGCCGTGAGCATCCTCTACCCCCAGGCTGGGCAGGAGTGTGCAAGGAGCTCATATACAC
 CTGCTCAGAGGCCCGCAAGGTTGCACACAAGAGACAGATCTCACCTGTGAAGTTC AACGACGCAGACTCG
 GTGCTACCCACAGAAGCAGAAGTACTCCCCGGAAGGTCTCGGCTGGTGTCTCTCCAGCAGCGATG
 ATGACCAGCAGCCAGATGTGACACAGCAGGAACAGCCTAAGAGAGTGTGCCTCAAGAGAAAAACATGT
 CTCCTCATCCGATGTGACTACTGCCAGAAAGTTGTGGATAGAAGCCCTCCTGCCAGCCTTAGGCCCCAA
 AGGGCAGACGATGAGTACGAGACCTCAGGGGAAGGCCAGGACATCTGGGACATGTGGATAAGGGGAACC
 CCTTCCAGTTTTATCTCACTAGAGTGTGGGGATTAAGGCAAAGTACAACCTCAAAGCCCTCCACATCAA
 GGATTTTTATCCCCTCTGTTTGGGACACTTGTCTCTTCAGCTCAGTTTAACTACTGCTTTGACGTGGAC
 TGGCTCATAAAGCAATATCCACCGGAATTCAGGAAGAACCCGATCCTGCTGTGACGCGGTGATAAGAGGG
 AAGCCAAGGCAGACTTACATGCCAGGCCAAGCCCTATGCGAACATTTCCCTCTGCCAGGCAAAGTTGGA
 TATTGCATTTGGAACACACCACAGAAAATGATGCTCTTGCTCTATGAAGAAGGCCCTCCGAGTTGTCATC
 CACACCTCCAACCTCATCCGGAAGACTGGCACCAGAAAACCCAAAGGAATATGGTTGAGCCCTTTGTACC
 CAAGAATTGACCAGGGAAGCCACACAGCTGGAGAGTCAAGCACCCGTTTCAAAGCTGACCTCACCAGTTA
 TCTAACGGCGTAAACGCTCCCCCTCTGCAGGAGTGGATAGACATCATCCAAGAGCATGACCTCTCTGAG
 ACCAATGTTTACCTCATTGGTTCAACCCCTGGACGTTTCAAGGAAGTCAACAGAGATAAAGGGGACATT
 TTAGGCTTAGAAAAGCTTCTGCAAGCGCATGCCCGTCCACACCCAAAGGGCGAGTGTGCCTATCGTGGG
 TCAGTTCTCAAGCATCGGCTCCCTGCGGGCCGATGAATCCAAGTGGCTGTGCTCGGAGTTTAAAGACAGC
 TTGCTGGCACTGAGAGAGGAAGGCCGACCTCCGGCAAGAGTGCAGTTCTCTTCTCATCTGATCTATCCCT
 CTGTGGAAAATGTGCGGACCAGCTTAGAAGGATACCCTGCTGGGGCTCTCTTCCCTATAGCATCCAGAC
 GGCTGAAAAGCAGAGGTGGCTGCACTCTACTTCCACAAGTGGTCAAGCAGAGACATCCGGCCGAAGTAAT
 GCCATGCCACACATTAAGACGTACATGAGGCCCTCGCCAGACTTCAGTAAACTGGCTTGGTTCTGGTCA
 CAAGTGCGAATCTGTCCAAGGCTGCCTGGGGGCACTGGAGAAGAAGCCACCCAGCTGATGATACGCTC
 CTACGAGCTCGGGTCTCTTCTCCCTGCGTTTGGCCTGGACACCTTCAAAGTGAACAGAAAATTC
 TTCTCCAGCAGCTGTGAGCCGACGGCCTCTTTCTGTGCCTATGACCTGCCCCAGAGCTGTACGGGA
 GTAAAGACCGGCCTTGGATTTGGAACATTCCTATGTCAAAGCACCTGACACGCACGGCAACATGTGGGT
 GCCCTCC

ACGCGTACGCGGCCGCTCGAGCAGAAACTCATCTCAGAAGAGGATCTGGCAGCAAATGATATCCTGGATT
 ACAAGGATGACGACGATAAGGTTTAA

Protein Sequence:

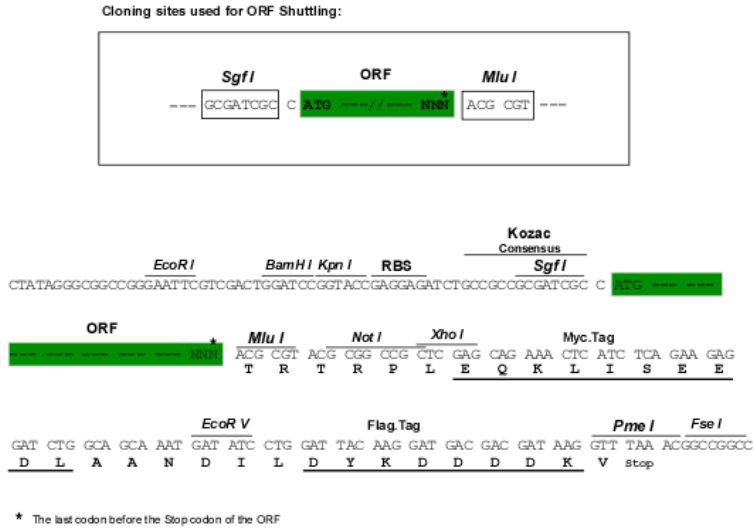
>MR209388 protein sequence
 Red=Cloning site Green=Tags(s)

MSQESSYGKWTISSDSEDEKPKPKPSASSHPQAGQGVSKELIYTCSEARKVAHKRQISPVKFNDADS
 VLPHKKQKSDSPEGLGWCLSSDDDDQQPDVTQEQPKRVLPEKKHVSSSDVTTAQKVVDSPASLRPQ
 RADDEYETSGEGQDIWMLDKGNPFQFYLTRVSGIKAKYNSKALHIKDILSPLFGTLVSSAQFNCFDVD
 WLKQYPPPEFRKNPILLVHGDKREAKADLHAQAKPYANISLQAKLDIAFGTHHTKMMLLLYEEGLRVVI
 HTSNLIREDWHQKTQGIWLSPLYPRIDQGSHTAGESSTRFKADLTSYLTAYNAPPLQEWIDIIQEHDLSE
 TNVYLLIGSTPGRFQGSHRDNWGHFRLRKLQAHAPSTPKGECWPIVGQFSSIGSLGPDESKWLCSEFKDS
 LLALREGRPPGKSAVPLHLIYPSVENVRTSLEGYPAGGSLPYSIQTAEKQRWLHSYFHKWSAETSGRSN
 AMPHIKTYMRSPDFSKLAWFLVTSANLSKAAWGALEKNGTQLMIRSYELGVFLPSAFGLDTFKVKQKF
 FSSSCEPTASFPVPYDLPEPELYGSKDRPWIWNIPYVKAPDTHGNMWPVS

TRTRPLEQKLISEEDLAANDILDYKDDDDKV

Restriction Sites: SgfI-MluI

Cloning Scheme:



ACCN: NM_028354

ORF Size: 1830 bp

OTI Disclaimer: The molecular sequence of this clone aligns with the gene accession number as a point of reference only. However, individual transcript sequences of the same gene can differ through naturally occurring variations (e.g. polymorphisms), each with its own valid existence. This clone is substantially in agreement with the reference, but a complete review of all prevailing variants is recommended prior to use. [More info](#)

OTI Annotation: This clone was engineered to express the complete ORF with an expression tag. Expression varies depending on the nature of the gene.

Components: The ORF clone is ion-exchange column purified and shipped in a 2D barcoded Matrix tube containing 10ug of transfection-ready, dried plasmid DNA (reconstitute with 100 ul of water).

Reconstitution Method:

1. Centrifuge at 5,000xg for 5min.
2. Carefully open the tube and add 100ul of sterile water to dissolve the DNA.
3. Close the tube and incubate for 10 minutes at room temperature.
4. Briefly vortex the tube and then do a quick spin (less than 5000xg) to concentrate the liquid at the bottom.
5. Store the suspended plasmid at -20°C. The DNA is stable for at least one year from date of shipping when stored at -20°C.

RefSeq: [NM_028354.4](#), [NP_082630.2](#)

RefSeq Size: 2073 bp

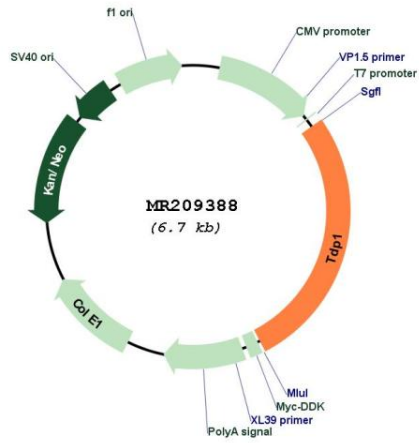
RefSeq ORF: 1830 bp

Locus ID: 104884

Cytogenetics: 12 E

MW: 68.6 kDa

Product images:



Circular map for MR209388