

## Product datasheet for MR209361L3

### Lox11 (NM\_010729) Mouse Tagged Lenti ORF Clone

#### Product data:

Product Type:	Expression Plasmids
Product Name:	Lox11 (NM_010729) Mouse Tagged Lenti ORF Clone
Tag:	Myc-DDK
Symbol:	Lox11
Synonyms:	L; Loxl
Mammalian Cell Selection:	Puromycin
Vector:	pLenti-C-Myc-DDK-P2A-Puro (PS100092)
E. coli Selection:	Chloramphenicol (34 ug/mL)
ORF Nucleotide Sequence:	The ORF insert of this clone is exactly the same as(MR209361).
Restriction Sites:	SgfI-RsrII
Cloning Scheme:	

Cloning sites used for ORF Shuttling:



\* The last codon before the Stop codon of the ORF.

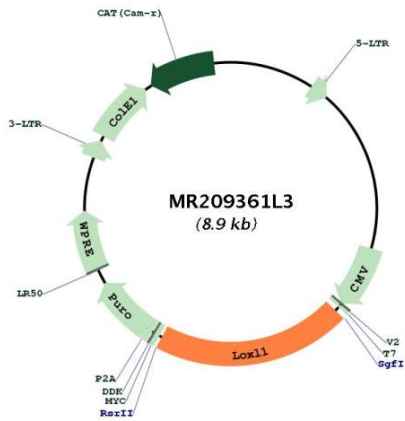
ACCN:	NM_010729
ORF Size:	1824 bp



[View online »](#)

<b>OTI Disclaimer:</b>	The molecular sequence of this clone aligns with the gene accession number as a point of reference only. However, individual transcript sequences of the same gene can differ through naturally occurring variations (e.g. polymorphisms), each with its own valid existence. This clone is substantially in agreement with the reference, but a complete review of all prevailing variants is recommended prior to use. <a href="#">More info</a>
<b>OTI Annotation:</b>	This clone was engineered to express the complete ORF with an expression tag. Expression varies depending on the nature of the gene.
<b>Components:</b>	The ORF clone is ion-exchange column purified and shipped in a 2D barcoded Matrix tube containing 10ug of transfection-ready, dried plasmid DNA (reconstitute with 100 ul of water).
<b>Reconstitution Method:</b>	<ol style="list-style-type: none"><li>1. Centrifuge at 5,000xg for 5min.</li><li>2. Carefully open the tube and add 100ul of sterile water to dissolve the DNA.</li><li>3. Close the tube and incubate for 10 minutes at room temperature.</li><li>4. Briefly vortex the tube and then do a quick spin (less than 5000xg) to concentrate the liquid at the bottom.</li><li>5. Store the suspended plasmid at -20°C. The DNA is stable for at least one year from date of shipping when stored at -20°C.</li></ol>
<b>RefSeq:</b>	<a href="#">NM_010729.2</a>
<b>RefSeq Size:</b>	3338 bp
<b>RefSeq ORF:</b>	1824 bp
<b>Locus ID:</b>	16949
<b>UniProt ID:</b>	<a href="#">P97873</a>
<b>Cytogenetics:</b>	9 31.65 cM
<b>Gene Summary:</b>	<p>This gene encodes a member of the lysyl oxidase family of copper-dependent enzymes that catalyze the formation of lysine-derived crosslinks in proteins such as collagen and elastin. The encoded preproprotein undergoes proteolytic processing to generate the mature, functional enzyme. Mice lacking the encoded protein fail to deposit normal elastic fibers in the uterine tract post partum and develop pelvic organ prolapse, enlarged airspaces of the lung, loose skin and vascular abnormalities with concomitant tropoelastin accumulation. [provided by RefSeq, Sep 2016]</p>

Product images:



Circular map for MR209361L3