

Product datasheet for **MR209291**

Unc93b1 (NM_019449) Mouse Tagged ORF Clone

Product data:

Product Type:	Expression Plasmids
Product Name:	Unc93b1 (NM_019449) Mouse Tagged ORF Clone
Tag:	Myc-DDK
Symbol:	Unc93b1
Synonyms:	Unc-93B1; Unc93b
Mammalian Cell Selection:	Neomycin
Vector:	pCMV6-Entry (PS100001)
E. coli Selection:	Kanamycin (25 ug/mL)



[View online »](#)

ORF Nucleotide Sequence:

>MR209291 ORF sequence
 Red=Cloning site Blue=ORF Green=Tags(s)

TTTTGTAATACGACTCACTATAGGGCGGCCGGGAATTCGTCGACTGGATCCGGTACCGAGGAGATCTGCC
 GCC**CGCATCGCC**

ATGGAGGTGGAGCCTCCGCTCTACCTGTGGCCGGGGCCGGGTCCTCAAGGGGATGAAGACCGGCACG
 GAGTTCCTGATGGGCCAGAGGCTCCCTTGACGAACCTCGTGGGTGCGTACCCCAACTACAATGAGGAGGA
 GGAAGAGCGCCGCTACTACCGCCGAAGCGCCTCGGAGTGGTCAAGAACGTGCTGGCGGCCAGCAGGGT
 GTCACCCTTACTTACGGCGTCTACCTGGGTCTCCTGCAGATGCAACTGATCCTGCACTATGATGAGACCT
 ACAGAGAGGTGAAGTATGGCAACATGGGGCTGCCGGACATCGATAGCAAGATGCTGATGGGTATCAACGT
 GACGCCTATCGCTGCCCTGCTCTACACACCTGTGCTCATCAGGTTTTTTGGTACCAAGTGGATGATGTTT
 TTGGCTGTGGGCATCTATGCCCTCTTTGTCTCTACCAACTACTGGGAACGCTACTACACGCTGGTGCCT
 CTGCTGTGGCTCTGGGCATGGCCATTGTGCTCTGTGGGCTCCATGGGCAACTATATCACCAGGATGTC
 CCAGAAGTACTATGAATACTCCCACTACAAGGAGCAAGATGAGCAGGGACCTCAGCAGCGCCACCACGA
 GGCTCCACGCACCCATCTCCTGGTTTTCCAGGCCATCTTCTATAGCTTCTTCCACTTGAGCTTCGCGT
 GTGCCAGCTGCCATGATTTACTTCTCAACAACTACCTGTATGACCTGAACCACACACTGATCAACGT
 GCAGAGCTGCGGTAAGAGCCAAGGCATTCTGAATGGCTTCAACAAGACGGTCCCTCGGACGCTGCCG
 CGCAGCAAAAACCTTATTGTTGTAGAGAGCGTGCTCATGGCGGTGGCCTTCTTGGCCATGCTGATGGTGC
 TGGGCTGTGTGGAGCCGCTTACCGGCCACGGAAGAGATCGACCTGCGCAGTGTGGGCTGGGGCAACAT
 CTTCCAGCTGCCCTTCAAACACGTCCGTGACTTTCGCTTACGCCATCTGGTGCCTTCTTTATCTACAGT
 GGCTTTGAGGTGCTCTTTGCCTGCACTGGTTTTGCCCTGGGCTACGGCGTGTCTCCATGGGGCTGCTGGAGC
 GACTGGCATACTGCTCATAGCTTACAGCCTGGGTGCCACAGCTCCCTCGGTTCTGGGGCTGCTGGGACT
 GTGGCTGCCTCGCTCTGTCCCGCTCGTGGCTGGGGCAGGACTGCACCTACTGCTCACCTTAGCCTCTTT
 TTCTGGGCTCCTGCTCCTCGGGTCTCCAGCACAGTTGGATCTTTTACTTCTGCTGGCTGCCCTCTGGGGT
 TGGGCAGCGCCCTCAACAAGACCGGACTTAGCACACTCCTGGGCATCCTATATGAAGACAAGAGAGGCA
 GGACTTCACTTACCATCTATCACTGGTGGCAGGCCGTGGCCATCTTTGTTGTGTACCTGGGCTCCAGC
 TTGCCATGAAGCCAAGCTGGCAGTGTGCTGGTACCCTGGTAGCAGCAGCAGCCTCATACCTGTGGA
 TGGAACAGAAGTGCAGCAAGGATTGGTCCCGCCGAGCCGCGCATTCCGAAGCCACAGCACAAAGTCCG
 CGGCTACCGCTACCTGGAGGAGACAACCTGGATGAGAGTGACATGGAGGGCAGCAGGGTCAAGGGGAC
 TGCGCAGAGGACGAAGCACACAGCAGGGCCCTGGGTACAGAGCCAGCTGGCCCTGCCCAAGCCCT
 GTCCTATGAACAGGCTCTGGGTGGCGATGGCCCTGAGGAGCAG

ACGCGTACGCGGCCGCTCGAGCAGAAACTCATCTCAGAAGAGGATCTGGCAGCAAATGATATCCTGGATT
 ACAAGGATGACGACGATAAGGTTTAA

Protein Sequence:

>MR209291 protein sequence
 Red=Cloning site Green=Tags(s)

MEVEPPLYPVAGAAGPQGDEDRHGVPDGPPEAPLDELVGAYPNYNEEEERRRYRRKRLGVVKNVLAASSTG
 VTLTYGVYLGLLQMQILILHYDETYREVKYGNMGLPDIDSKMLMGINVTPIAALLYTPVLIRFFGKWMFMF
 LAVGIYALFVSTNYWERYTLPVSAVALGMAIVPLWASMGNYITRMSQKYYEYSHYKEQDEQGPQQRPPR
 GSHAPYLLVFQAIIFYSFHLSFACAQLPMIYFLNLYLIDLNHTLINVQSCGTKSQGILNGFNKTVLRLTP
 RSKNLIIVVESVLMVAFLAMLMLVGLCGAAYRPTTEIDLRSVWGNIQFLPFKHVRDFRLRHLVPPFIYS
 GFEVLFACCTGFALGYGVCSMGLERLAYLLIAYSLGASASSVLLGLLWLPVPRVPLVAGAGLHLLTLTLF
 FWAPAPRVLQHSWIFYFVAALWVGVSALNKTGLSTLLGILYEDKERQDFIFTIYHWWQAVAFVYVYLGSS
 LPMKAKLAVLLVTLVAAAASYLWMEQKLQQLVPRQPRIPKPKQHKVRYRYLEEDNSDESMEGEQGQGD
 CAEDEAPQAGPLGTEPAGPCRKPCPYEQALGGDGPEEQ

TRTRPLEQKLISEEDLAANDILDYKDDDDKV

Restriction Sites:

Sgfl-MluI

Cloning Scheme:


ACCN: NM_019449

ORF Size: 1797 bp

OTI Disclaimer: The molecular sequence of this clone aligns with the gene accession number as a point of reference only. However, individual transcript sequences of the same gene can differ through naturally occurring variations (e.g. polymorphisms), each with its own valid existence. This clone is substantially in agreement with the reference, but a complete review of all prevailing variants is recommended prior to use. [More info](#)

OTI Annotation: This clone was engineered to express the complete ORF with an expression tag. Expression varies depending on the nature of the gene.

Components: The ORF clone is ion-exchange column purified and shipped in a 2D barcoded Matrix tube containing 10ug of transfection-ready, dried plasmid DNA (reconstitute with 100 ul of water).

Reconstitution Method:

1. Centrifuge at 5,000xg for 5min.
2. Carefully open the tube and add 100ul of sterile water to dissolve the DNA.
3. Close the tube and incubate for 10 minutes at room temperature.
4. Briefly vortex the tube and then do a quick spin (less than 5000xg) to concentrate the liquid at the bottom.
5. Store the suspended plasmid at -20°C. The DNA is stable for at least one year from date of shipping when stored at -20°C.

RefSeq: [NM_019449.1](#), [NP_062322.1](#)

RefSeq Size: 2277 bp

RefSeq ORF: 1860 bp

Locus ID: 54445

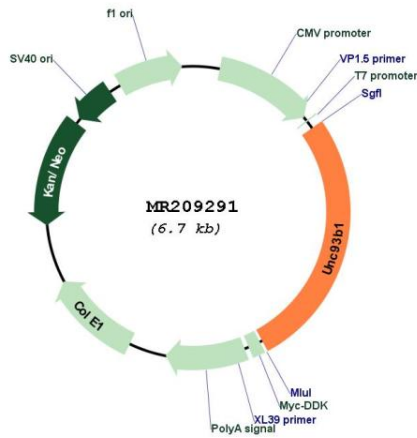
UniProt ID: [Q8VCW4](#)

Cytogenetics: 19 A

MW: 67 kDa

Gene Summary: Plays an important role in innate and adaptive immunity by regulating nucleotide-sensing Toll-like receptor (TLR) signaling. Required for the transport of a subset of TLRs (including TLR3, TLR7 and TLR9) from the endoplasmic reticulum to endolysosomes where they can engage pathogen nucleotides and activate signaling cascades. May play a role in autoreactive B-cells removal.[UniProtKB/Swiss-Prot Function]

Product images:



Circular map for MR209291