

Product datasheet for **MR209269**

Tbkbp1 (NM_198100) Mouse Tagged ORF Clone

Product data:

Product Type:	Expression Plasmids
Product Name:	Tbkbp1 (NM_198100) Mouse Tagged ORF Clone
Tag:	Myc-DDK
Symbol:	Tbkbp1
Synonyms:	3110043L15Rik; ProSAPiP2; SINTBAD
Mammalian Cell Selection:	Neomycin
Vector:	pCMV6-Entry (PS100001)
E. coli Selection:	Kanamycin (25 ug/mL)



[View online »](#)

ORF Nucleotide Sequence:

>MR209269 representing NM_198100
 Red=Cloning site Blue=ORF Green=Tags(s)

TTTTGTAATACGACTCACTATAGGGCGGCCGGAATTCGTCGACTGGATCCGGTACCGAGGAGATCTGCC
 GCC**CGCATCGCC**

ATGGAGTCCATGTTTGAAGATGACATCAGCATCCTGACCCAAGAGGCCTTGGGGCCAGTGAGGTGTGGC
 TGGATGGTCTGGAGACCGTCCCTGGGAGGGGACATGTGTTCTGCCTCCCACTTTGCCCTCATCACAGC
 CTACGGAGACATCAAGGAAAGGCTAGGAGGCCTGGAGAGGGAGAATGCCACCCTCCGCCGTCGCCTCAAA
 GTCTATGAGATCAAGTATCCGCTGATCACTGATTTTGGAGAGGAGCATGGCTTCCCTCTGTATGAACTCA
 AGGATGGTCCCTGCTGGAGGTGGAGAAGGTCACTGTCAGCAACGACTCAACCAATTCACACAGGTT
 GCAGAAGAGTAAGGAGCAGGAGGAGCAGCTCGGGGAGATGATCCAGGCTTACGAGAACTGTGCGTGGAG
 AAAAGCGACTTGGAGACAGACTGGGGGAGATGCGGGCCCTGGTAGAGACTCATCTACGGCAGATCTGTG
 GTCTGGAGAAACAGCTGCAGCAACAGCAGGGCCCTCGGGAGCAGCTTTCTCCAGCTGAGCCCCCAGC
 TGTCCCCGCCTCAGCCTGCTGACTTGGACCTGCACTATCTGGCTCTGAGAGGGGGACCTGCCTGGGT
 CATGGTTGGCCTGGCCCTACGAGTGAAGTGTGAGCGAGCTGGAGAGGAGCGCCTGGAAGAGGCCCTGG
 AGGCTGCGCAGGGGGAGGCTCGGGGGGCTCAGCTCCGGGAGGAGCAACTCCAGGCGGAATGCGAGAGACT
 TCAGGGAGAGCTGAAGCAACTGCAGGAGACCCGGGCCAGGATCTGGCCTCCAACCAAGTCGGAATGTGAC
 ATGGCTTGGGTCAAGAGAGTTGGGGATGATCAGGTGAACCTGGCCTGGCCTACACAGAACTGACAGAGG
 AGCTGGTTCGGCTTCGGGAGCTGAGTCCCTGCAGGGGAGGATCTTGAGGACTTTGCTGCAGGAACAGGC
 CCGCAACGCAGGCCAAAGGCACTCACCGCTGTCGCAACGTCACTCCCGGCCCTGCGTGCCCTCACCC
 TCCCCGCCTGCCGACCGCCGCTGTGCCCGTGCAGTCCCCGCTGCACAGCGCCGTTGCGCCGTGC
 CCCCCTGCCCTTCGCCCCAGCAGCGCCGCTCGCCCGCTCGCCGCTCCTGCCGTCCTCCCGTCCCACAGCG
 CGCTCGCCCGTCCCGCGTCTGCCAGTCGCCAGTCCCTCAGCGCCGCTCGCCTGTGCCACCCAGCTGC
 CCGCCCCGACGCCCGCCGCCACCACCGGGGAGAGGACGCTGGCCGAGCGTGTCTACGCCAAGC
 CGCCAGCCACCAGCCAAGGCCGGCTTCAGGGCCGCCGAGCTACTCGGAGCTGGCGGAGGGGGCGGC
 CTACGCTGGTGCCTCCCCGCTGGCTACAGGCCGAGGCTGCCACACTTCCAAGCCCCGCGCTATGGC
 GCGAGCTCTACGGCAGGCCGCTCAGCCCGCGCCGAGCCTTTGAGGGCATCCGCTGCGCTTTGAGAAGC
 AGCCATCTGAAGAAGAGGAGTGGCTATGCCGGCCAGCCGCCAGTCCCAGGCGGGCACCATCCGCTG
 CGTTCATTCTGTGCGGGCTTCCCATCCAGAGTCGCTGCGGCCACCGCTATGCCACGCTGAGCAC
 GCACAGTCTGGCCATCCATCAACCTACTGATGGAGACGGTGGGCTCTGATATCCGAGCTGCCCTCT
 GCCAGCTGGGTTCCCTGTTGGGTACCCAGATGATGCTCTCATCAACACATAGACTCCCACCTTGAA
 CAGCAAGATC

ACGCGTACGCGGCCGCTCGAGCAGAACTCATCTCAGAAGAGGATCTGGCAGCAATGATATCCTGGATT
 ACAAGGATGACGACGATAAGGTTTAA

Protein Sequence:

>MR209269 representing NM_198100
 Red=Cloning site Green=Tags(s)

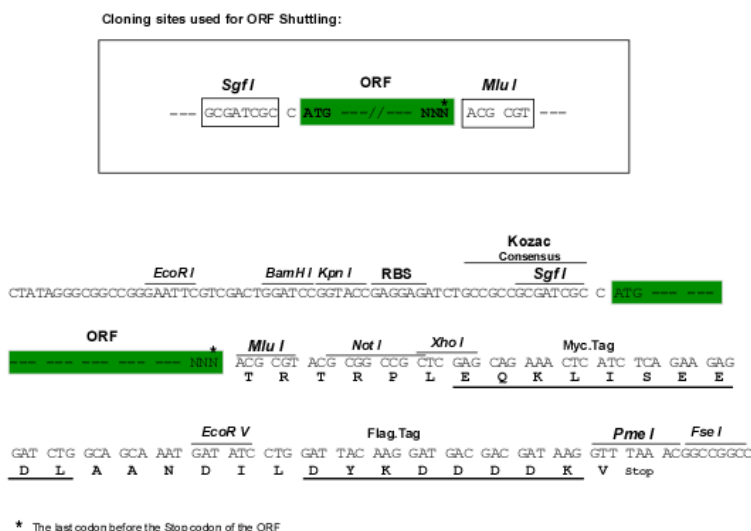
MESMFEDDISILTQEALGPSEVWLDGPGDPSLGGDMCSASHFALITAYGDIKERLGGLERENATLRRRLK
 VYEIKYPLITDFGEEHGFPLYELKDGSLLEVEKVSLLQRLNQFQHELQKSKEQEEQLGEMIQAYEKLVE
 KSDLETELGEMRALVETHLRQICGLEKQLQQQGLRDAAFSSLSPPAVPASACPDLDLHYLALRGGPALG
 HGWPGPTSVSVSELERRRLEEALEAAQGEARGAQLREEQLQAECERLQELKQLQETRAQDLASNQSECD
 MAWVKRVGDDQVNLALAYTELTEELGRLRELSLQGRILRTLQEQARNAGQRHSPLSQRHSPAPACPS
 SPPARPPPCAPCQSPAAQRRSPVPCSPQRRSPASPSCPSPVQRRSPVPPSCQSPSPQRRSPVPPSC
 PAPQPRPPPPGERTLAERVYAKPPSHHAKAGFQRRSYSELAEGAAYAGASPAWLQAEATLKPFRAYG
 GELYGRPLSPRRAFEGIRLRFKQPSSEEEWAMPASPPSPEAGTIRCAFCAGFPIPESPAATAYAHAEH
 AQSWPSINLLMETVGSDIRSCPLCQLGFPVGYPPDALIKHIDSHLENSKI

TRTRPLEQKLISEEDLAANDILDYKDDDDKV

Chromatograms: https://cdn.origene.com/chromatograms/mm9090_g06.zip

Restriction Sites: SgfI-MluI

Cloning Scheme:



ACCN: NM_198100

ORF Size: 1830 bp

OTI Disclaimer: The molecular sequence of this clone aligns with the gene accession number as a point of reference only. However, individual transcript sequences of the same gene can differ through naturally occurring variations (e.g. polymorphisms), each with its own valid existence. This clone is substantially in agreement with the reference, but a complete review of all prevailing variants is recommended prior to use. [More info](#)

OTI Annotation: This clone was engineered to express the complete ORF with an expression tag. Expression varies depending on the nature of the gene.

Components: The ORF clone is ion-exchange column purified and shipped in a 2D barcoded Matrix tube containing 10ug of transfection-ready, dried plasmid DNA (reconstitute with 100 ul of water).

Reconstitution Method:

1. Centrifuge at 5,000xg for 5min.
2. Carefully open the tube and add 100ul of sterile water to dissolve the DNA.
3. Close the tube and incubate for 10 minutes at room temperature.
4. Briefly vortex the tube and then do a quick spin (less than 5000xg) to concentrate the liquid at the bottom.
5. Store the suspended plasmid at -20°C. The DNA is stable for at least one year from date of shipping when stored at -20°C.

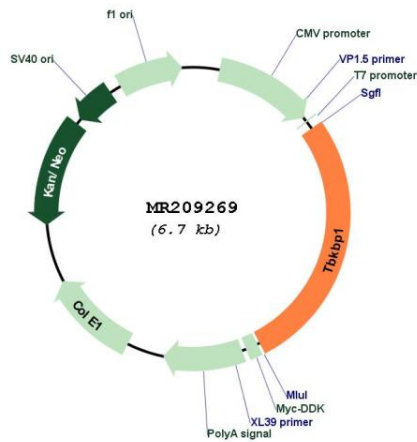
RefSeq: [NM_198100.3](#)

RefSeq Size: 3358 bp

RefSeq ORF: 1833 bp

Locus ID: 73174
UniProt ID: [A2A9T0](#)
Cytogenetics: 11 D
MW: 66.9 kDa
Gene Summary: Adapter protein which constitutively binds TBK1 and IKKBE playing a role in antiviral innate immunity. Essential for the efficient induction of IRF-dependent transcription following infection with Sendai virus.[UniProtKB/Swiss-Prot Function]

Product images:



Circular map for MR209269