

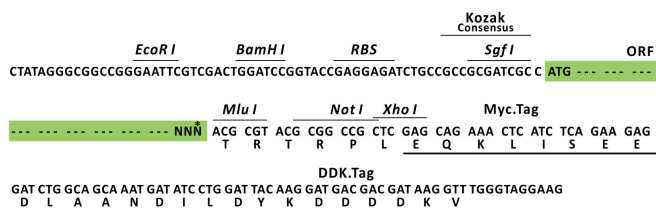
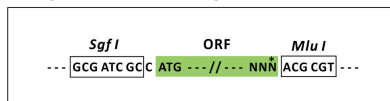
Product datasheet for MR209268L3

Glmn (NM_133248) Mouse Tagged Lenti ORF Clone

Product data:

Product Type:	Expression Plasmids
Product Name:	Glmn (NM_133248) Mouse Tagged Lenti ORF Clone
Tag:	Myc-DDK
Symbol:	Glmn
Synonyms:	9330160J16Rik; AW227515; Fap48; Fap68
Mammalian Cell Selection:	Puromycin
Vector:	pLenti-C-Myc-DDK-P2A-Puro (PS100092)
E. coli Selection:	Chloramphenicol (34 ug/mL)
ORF Nucleotide Sequence:	The ORF insert of this clone is exactly the same as(MR209268).
Restriction Sites:	SgfI-MluI
Cloning Scheme:	

Cloning sites used for ORF Shuttling:



* The last codon before the Stop codon of the ORF.

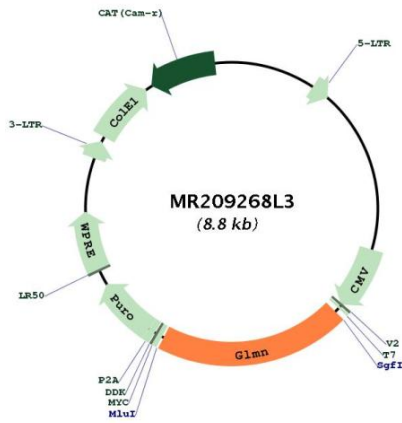
ACCN:	NM_133248
ORF Size:	1788 bp



[View online »](#)

OTI Disclaimer:	The molecular sequence of this clone aligns with the gene accession number as a point of reference only. However, individual transcript sequences of the same gene can differ through naturally occurring variations (e.g. polymorphisms), each with its own valid existence. This clone is substantially in agreement with the reference, but a complete review of all prevailing variants is recommended prior to use. More info
OTI Annotation:	This clone was engineered to express the complete ORF with an expression tag. Expression varies depending on the nature of the gene.
Components:	The ORF clone is ion-exchange column purified and shipped in a 2D barcoded Matrix tube containing 10ug of transfection-ready, dried plasmid DNA (reconstitute with 100 ul of water).
Reconstitution Method:	<ol style="list-style-type: none">1. Centrifuge at 5,000xg for 5min.2. Carefully open the tube and add 100ul of sterile water to dissolve the DNA.3. Close the tube and incubate for 10 minutes at room temperature.4. Briefly vortex the tube and then do a quick spin (less than 5000xg) to concentrate the liquid at the bottom.5. Store the suspended plasmid at -20°C. The DNA is stable for at least one year from date of shipping when stored at -20°C.
RefSeq:	NM_133248.2 , NP_573511.2
RefSeq Size:	2015 bp
RefSeq ORF:	1791 bp
Locus ID:	170823
UniProt ID:	Q8BZM1
Cytogenetics:	5 E5
Gene Summary:	Regulatory component of cullin-RING-based SCF (SKP1-Cullin-F-box protein) E3 ubiquitin-protein ligase complexes. Inhibits E3 ubiquitin ligase activity by binding to the RING domain of RBX1 and inhibiting its interaction with the E2 ubiquitin-conjugating enzyme CDC34. Inhibits RBX1-mediated neddylation of CUL1 (By similarity). Required for normal stability and normal cellular levels of key components of SCF ubiquitin ligase complexes, including FBXW7, RBX1, CUL1, CUL2, CUL3, CUL4A, and thereby contributes to the regulation of CCNE1 and MYC levels (PubMed:22405651). Essential for normal development of the vasculature (PubMed:22405651). Contributes to the regulation of RPS6KB1 phosphorylation (By similarity).[UniProtKB/Swiss-Prot Function]

Product images:



Circular map for MR209268L3