

Product datasheet for MR209183L3

C8b (NM_133882) Mouse Tagged Lenti ORF Clone

Product data:

Product Type:	Expression Plasmids
Product Name:	C8b (NM_133882) Mouse Tagged Lenti ORF Clone
Tag:	Myc-DDK
Symbol:	C8b
Synonyms:	4930439B20Rik; AI595927
Mammalian Cell Selection:	Puromycin
Vector:	pLenti-C-Myc-DDK-P2A-Puro (PS100092)
E. coli Selection:	Chloramphenicol (34 ug/mL)
ORF Nucleotide Sequence:	The ORF insert of this clone is exactly the same as(MR209183).
Restriction Sites:	SgfI-MluI
Cloning Scheme:	

Cloning sites used for ORF Shuttling:



* The last codon before the Stop codon of the ORF.

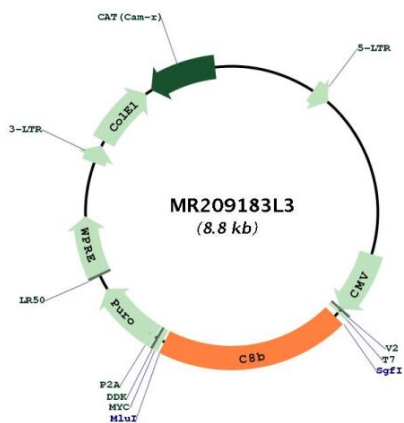
ACCN:	NM_133882
ORF Size:	1770 bp



[View online »](#)

OTI Disclaimer:	The molecular sequence of this clone aligns with the gene accession number as a point of reference only. However, individual transcript sequences of the same gene can differ through naturally occurring variations (e.g. polymorphisms), each with its own valid existence. This clone is substantially in agreement with the reference, but a complete review of all prevailing variants is recommended prior to use. More info
OTI Annotation:	This clone was engineered to express the complete ORF with an expression tag. Expression varies depending on the nature of the gene.
Components:	The ORF clone is ion-exchange column purified and shipped in a 2D barcoded Matrix tube containing 10ug of transfection-ready, dried plasmid DNA (reconstitute with 100 ul of water).
Reconstitution Method:	<ol style="list-style-type: none">1. Centrifuge at 5,000xg for 5min.2. Carefully open the tube and add 100ul of sterile water to dissolve the DNA.3. Close the tube and incubate for 10 minutes at room temperature.4. Briefly vortex the tube and then do a quick spin (less than 5000xg) to concentrate the liquid at the bottom.5. Store the suspended plasmid at -20°C. The DNA is stable for at least one year from date of shipping when stored at -20°C.
RefSeq:	NM_133882.1 , NP_598643.1
RefSeq Size:	2239 bp
RefSeq ORF:	1770 bp
Locus ID:	110382
UniProt ID:	Q8BH35
Cytogenetics:	4 48.61 cM
Gene Summary:	This gene encodes the beta subunit of complement component C8 that participates in the assembly of the complement membrane attack complex. The encoded preproprotein undergoes proteolytic processing to generate the beta subunit, which associates with the alpha and gamma subunits to form a trimeric complement component, C8. Alternative splicing results in multiple transcript variants encoding different isoforms that may undergo similar proteolytic processing. This gene is located adjacent to the gene encoding the alpha subunit. [provided by RefSeq, Oct 2015]

Product images:



Circular map for MR209183L3