

Product datasheet for **MR209179**

Lmnb1 (NM_010721) Mouse Tagged ORF Clone

Product data:

Product Type:	Expression Plasmids
Product Name:	Lmnb1 (NM_010721) Mouse Tagged ORF Clone
Tag:	Myc-DDK
Symbol:	Lmnb1
Mammalian Cell Selection:	Neomycin
Vector:	pCMV6-Entry (PS100001)
E. coli Selection:	Kanamycin (25 ug/mL)



[View online »](#)

ORF Nucleotide Sequence:

>MR209179 representing NM_010721
 Red=Cloning site Blue=ORF Green=Tags(s)

TTTTGTAATACGACTCACTATAGGGCGGCCGGAATTCGTCGACTGGATCCGGTACCGAGGAGATCTGCC
 GCC**CGGATCGCC**

ATGGCGACCGCGACCCCCGTGCAGCAGCAGCGGGCGGGCAGCCGCGCCAGCGCCCCGCCACGCCGCTCA
 GCCCACGCGCCTGTCGCGCCTGCAGGAGAAAGAGGAGCTGCGGGAGCTCAACGACCGCCTGGCTGTGTA
 CATCGATAAGGTGCGCAGCCTGGAGACGGAGAACAGCGCCTGCAGCTGCAGGTGACCGAGCGCAGGAG
 GTGCGCGGCCGCGAGCTCACCGCCTCAAGGCTCTCTACGAGACCGAGCTGGCCGACGCACGCCGCGCTC
 TGGACGACACGGCCGCGAGCGCCCAAGCTCCAGATCGAGCTGGCAAGTTCAAGGCCGAGCACGACCA
 GCTGCTGCTCAATTATGCCAAGAAGGAATCTGATCTCAGTGGAGCCAGATCAAGCTTCGAGAGTATGAG
 GCGGCACTAAACTCTAAGGATGCGGCGCTGGCTACTGCCCTAGGGGACAAAAAGAGTTTAGAGGGAGACT
 TGGAGGATCTGAAAGATCAGATTGCCAGCTAGAAGCATCCTTATCTGCCGCAAAAAGCAGTTAGCAGA
 TGAACCTTACTTAAAGTGGATTTGGAGAATCGCTGTCAGAGCCTTACTGAGGACTTGGAGTTTCGTA
 AATATGTATGAAGAGGAGATCAATGAGACAAGGAGGAAGCATGAGACCCGCTTGGTGAAGTGGACTCTG
 GCGTCAGATTGAGTATGAGTACAAGCTGGCTCAAGCCCTGCATGAGATGCGGGAGCAGCAGCAGCGCA
 GGTGAGGCTGTACAAGGAAGAGCTGGAGCAGACCTACCACGCCAAGCTTGAGAATGCCAGACTCTCCTCA
 GAGATGAACACTTCCACTGTCAACAGTGCCCGGAAGAGCTGATGGAGAGCCGGATGAGGATCGAGAGCC
 TCTCCTCACAGCTCTCTAACCTGCAGAAAGAGTCTAGAGCGTGTGGAAAGGATCCAGGAATTGGAGGA
 CATGCTTGCTAAGGAGAGAGACAACTCGCGCCGATGCTGTCTGACAGAGAGAGAGATGGCGGAGATC
 AGGGACCAGATGCAGCAGCAGCTGAGTGATTATGAGCAGCTGCTGGACGTGAAGCTGGACATGG
 AGATCAGCGCCTACAGGAAGCTCCTGGAAGCGAAGAAGAGCGGTTAAAGCTCTCTCAAGCCCTTCTTC
 CCGGGTGACCGTGTCCAGAGCGTCTCCAGTCCGAGTGTGCGCACCAACAGAGGAAAGCGGAAGAGATT
 GATGTGGAGGAGTTCGAGGCGAGCAGCAGTGTAGCATTTCCTACTCTGCCTCAGCCACGGGAACGTGT
 GCATTGAAGAGATAGATGTTGATGGGAAGTTTATTGCTTGAAGAACAATCTGAGCAGGATCAACCAAT
 GGGAGGCTGGGAGATGATCAGAAAAATTGGAGACACATCAGTCAGTTACAAATATACCTCAAGATATGTG
 CTGAAGGCTGGCCAGACTGTACAGTGTGGCTGCAAATGCTGGCGTACAGCCAGCCCTCAACTGACC
 TCATCTGGAAGAACCAGAACTCTGGGGTACTGGTGAAGATGTGAAGTTATATTGAAGAATTCTCAGGG
 AGAGGAGGTTGCTCAGAGAAGCACAGTCTCAAGACCACCATACCCGAGGAGGAGGAGGAGGAGGAGG
 GAGCCCATCGGAGTGGCTGTGGAGGAGGAGCGTTCCACCAGCAGGGAGCCCAAGAGCATCCAATAAAA
 GCTGTGCCATTATG

ACGCGTACGCGGCCGCTCGAGCAGAAACTCATCTCAGAAGAGGATCTGGCAGCAAATGATATCCTGGATT
 ACAAGGATGACGACGATAAGGTTTAA

Protein Sequence:

>MR209179 representing NM_010721
 Red=Cloning site Green=Tags(s)

MATATPVQQRAGSRASAPATPLSPTRL SRLQEKEELRELNDRLAVYIDKVRSLLETENSALQLQVTEREE
 VRGREL TGLKALYETELADARRALDDTARERAKLQIELGKFKAEHDQLLLNYAKKESDL SGAQIKLREYE
 AALNSKDAALATALGDKKSLEGDLEDLKDQIAQLEASLSAAKKQLADETLLKVDLENRCQSLTEDLEFRK
 NMYEEEINETRRKHETRLVEVDSGRQIEYKYLAQALHEMREQHDAQVRLYKEELEQTYHAKLENARLSS
 EMNTSTVNSAREELMESRMRIESLSSQLSNLQKESRACLERIQELEDMLAKERDNSRRMLSDREREMAEI
 RDQMQQQLSDYEQLLDVKLALDMEISAYRKLLEGEERLKLSPSPSSRVTVSRASSRSVTRTRGKRKR
 DVEESEASSSVSISHSASATGNVCIEEIDVDGKFI RLKNTSEQDQPMGGWEMIRKIGDTSVSYKYTSRYV
 LKAGQTVTVWAANAGVTASPTDLIWKQNQNSWGTGEDVKVILKNSQGE EVAQRSTVFKTTIPEEEEEEE
 EPIGVAVEEERFHQQGAPRASNKSCAIM

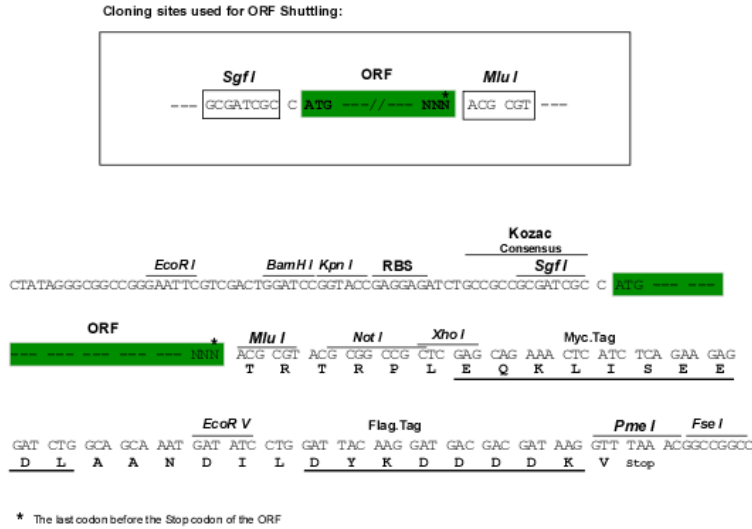
TRTRPLEQKLISEEDLAANDILDYKDDDDKV

Chromatograms:

https://cdn.origene.com/chromatograms/mm9089_b02.zip

Restriction Sites: SgfI-MluI

Cloning Scheme:



ACCN: NM_010721

ORF Size: 1764 bp

OTI Disclaimer: The molecular sequence of this clone aligns with the gene accession number as a point of reference only. However, individual transcript sequences of the same gene can differ through naturally occurring variations (e.g. polymorphisms), each with its own valid existence. This clone is substantially in agreement with the reference, but a complete review of all prevailing variants is recommended prior to use. [More info](#)

OTI Annotation: This clone was engineered to express the complete ORF with an expression tag. Expression varies depending on the nature of the gene.

Components: The ORF clone is ion-exchange column purified and shipped in a 2D barcoded Matrix tube containing 10ug of transfection-ready, dried plasmid DNA (reconstitute with 100 ul of water).

- Reconstitution Method:
1. Centrifuge at 5,000xg for 5min.
 2. Carefully open the tube and add 100ul of sterile water to dissolve the DNA.
 3. Close the tube and incubate for 10 minutes at room temperature.
 4. Briefly vortex the tube and then do a quick spin (less than 5000xg) to concentrate the liquid at the bottom.
 5. Store the suspended plasmid at -20°C. The DNA is stable for at least one year from date of shipping when stored at -20°C.

RefSeq: [NM_010721.2](#), [NP_034851.2](#)

RefSeq Size: 2871 bp

RefSeq ORF: 1767 bp

Locus ID: 16906

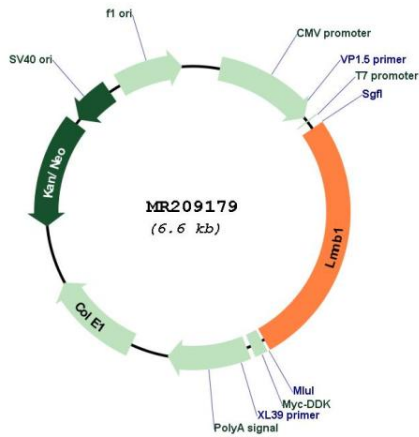
UniProt ID: [P14733](#)

Cytogenetics: 18 30.84 cM

MW: 66.8 kDa

Gene Summary: Lamins are components of the nuclear lamina, a fibrous layer on the nucleoplasmic side of the inner nuclear membrane, which is thought to provide a framework for the nuclear envelope and may also interact with chromatin.[UniProtKB/Swiss-Prot Function]

Product images:



Circular map for MR209179