

Product datasheet for MR209163L3

C8a (NM_146148) Mouse Tagged Lenti ORF Clone

Product data:

Product Type:	Expression Plasmids
Product Name:	C8a (NM_146148) Mouse Tagged Lenti ORF Clone
Tag:	Myc-DDK
Symbol:	C8a
Mammalian Cell Selection:	Puromycin
Vector:	pLenti-C-Myc-DDK-P2A-Puro (PS100092)
E. coli Selection:	Chloramphenicol (34 ug/mL)
ORF Nucleotide Sequence:	The ORF insert of this clone is exactly the same as(MR209163).
Restriction Sites:	Sgfl-MluI
Cloning Scheme:	

Cloning sites used for ORF Shuttling:



* The last codon before the Stop codon of the ORF.

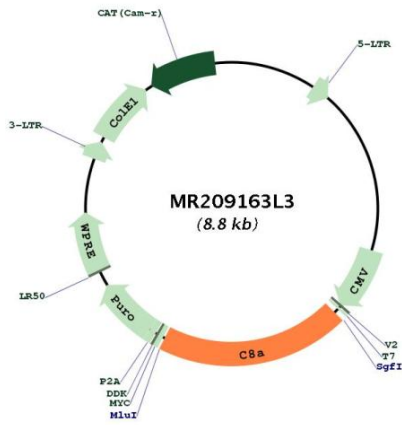
ACCN:	NM_146148
ORF Size:	1764 bp



[View online »](#)

OTI Disclaimer:	The molecular sequence of this clone aligns with the gene accession number as a point of reference only. However, individual transcript sequences of the same gene can differ through naturally occurring variations (e.g. polymorphisms), each with its own valid existence. This clone is substantially in agreement with the reference, but a complete review of all prevailing variants is recommended prior to use. More info
OTI Annotation:	This clone was engineered to express the complete ORF with an expression tag. Expression varies depending on the nature of the gene.
Components:	The ORF clone is ion-exchange column purified and shipped in a 2D barcoded Matrix tube containing 10ug of transfection-ready, dried plasmid DNA (reconstitute with 100 ul of water).
Reconstitution Method:	<ol style="list-style-type: none">1. Centrifuge at 5,000xg for 5min.2. Carefully open the tube and add 100ul of sterile water to dissolve the DNA.3. Close the tube and incubate for 10 minutes at room temperature.4. Briefly vortex the tube and then do a quick spin (less than 5000xg) to concentrate the liquid at the bottom.5. Store the suspended plasmid at -20°C. The DNA is stable for at least one year from date of shipping when stored at -20°C.
RefSeq:	NM_146148.1 , NP_666260.1
RefSeq Size:	3636 bp
RefSeq ORF:	1764 bp
Locus ID:	230558
UniProt ID:	Q8K182
Cytogenetics:	4 C6
Gene Summary:	This gene encodes the alpha subunit of complement component C8 that participates in the assembly of the complement membrane attack complex. The encoded preproprotein undergoes proteolytic processing to generate the alpha subunit, which associates with the beta and gamma subunits to form a trimeric complement component, C8. Alternative splicing results in multiple transcript variants encoding different isoforms that may undergo similar proteolytic processing. This gene is located adjacent to the gene encoding the beta subunit. [provided by RefSeq, Oct 2015]

Product images:



Circular map for MR209163L3