

## Product datasheet for **MR209101**

### **Sspl2c (NM\_001082535) Mouse Tagged ORF Clone**

#### **Product data:**

Product Type:	Expression Plasmids
Product Name:	Sspl2c (NM_001082535) Mouse Tagged ORF Clone
Tag:	Myc-DDK
Symbol:	Sspl2c
Synonyms:	4933407P14Rik; IMP5
Vector:	pCMV6-Entry (PS100001)
E. coli Selection:	Kanamycin (25 ug/mL)
Cell Selection:	Neomycin



[View online »](#)

**ORF Nucleotide Sequence:**

>MR209101 representing NM\_001082535  
 Red=Cloning site Blue=ORF Green=Tags(s)

TTTTGTAATACGACTCACTATAGGGCGGCCGGGAATTCGTCGACTGGATCCGGTACCGAGGAGATCTGCC  
 GCC**CGGATCGCC**

ATGGCATGCGCTGGGTTCCCTCCACCCCTTGGGCTCACTCCTCCTCCTCCTCCTCCTCCTCCTCCTCAGCC  
 CCGAGGCCCGGGGAGAATACGGCCTGGTCCGAGTCGTGTCAAAGAACTGGAGCAAGGACTACTGTGTCT  
 GTACAGCTCTGACTACGTCAACCTCCCCGGGACCTGCACCATGCCCACTTCTGTCCCTGCATGATGGC  
 ACCAAGACACCCTGGTGTCCAGATGAAGACTCTTCCACCAGGCCAGGACAGTCCCCTAGACAGCGAC  
 CCCTGCACCAGACTACTACCATGGTACGCGTGGCAACTGTAGCTTCTATGCCAAGGGCTGGCTGGCTCA  
 AGATCAAGGGCGCCAGGGGTTGCTCATTGTGAGCCGGCCAGGAATCAACAGTGTTCAGACACCATCTCA  
 AAGCCCCAGGACCCAGCAAGCCCTGGCTGCCCTACCATCCCAGTGGCCGTGCTCCGCTACACTGACA  
 TGTTGGACATTGTCAGCCACACTTACGGTGACACCGATGTCGAGTAGCCATGTTTGACCCCTCGAGCC  
 TGTTACTGACTATAACATGGCGATTATCTTCATCTTGGCAGTGGGTAAGTGTGTCAGTGGCTACTGG  
 GCTGGTTTGATGGAGGCAAAAGCTGCAGAGGGCCAGGCCAAAGAGGAGGGGGCTTGGTGGTCACA  
 ATCAACAACAACAGTGGCAGCTGAGAGGTCCAAAGGGCCTGGGAAGATGACGACTTTGAAGATGCACC  
 TATGGATTTACACCAGCCATGACGGGCGCTGTGGTACCATGTCCTGCTCCATCATGATCCTGTGTAT  
 TTTTCTATGACTGCTTTGTCTACGTATGATTGGGATCTTTAGCCTGGGTGCCAGTACCGGCTCTACA  
 GCTGCCTGGCACCCATACTGTGCCACCTGCCCTATGGCGATACCAGTGGGTCTTGCTGGACAACGGGT  
 TTCTGTAACATGGCCATTACTACTGTGGCAGGCTGTGTGCCATGGTACTGTCCTCTGGGTATCCAC  
 CGAAATGAGGACATTGGGATGGCTCCTGCAGGACACTTTGGGTGTCGCCTACTGCCTTTTGTCTGA  
 GCGGGTACGGCTGCCACGTTCAAGAAGTGCACCTTTGTTCTGCTGGCCCTACTAGCCTTCGATGCTT  
 CTTTGTCTTATCACTCCCTGTTACCAAGACTGGTGAGAGCATTATGGTAGAAGTGGCATCAGGTCCA  
 GCAGATTCTTCAAGCCAGAGAGTTACCAATGGTGTCAAGGTGCCCGGCTAAGCTTTTCCGCTTGA  
 CGTTGTGCAACCAGCCCTTCTCCATCCTTGGCTTTGGGACATTGTTGTCCTGGCTTCTAGTGGCCTA  
 CTGTCACCGCTTCGACATGCAAGTCCAATCTCGCCAGGCTACTATATGGCCTGTACAGTGGCCTATGCC  
 GTGGGCTGCTGGTACCTTTGTGCGCATGATCCTCATGCAGATGGGCCAGCCTGCCCTGCTCTACTTAG  
 TGTCCAGCACTGCTCACCAGCCTTGTGTGGCCACCTGCCGCAAGAGTTCACCTTTTCTGGACTGG  
 CCAGGGCAGAGCCAAGATTCTGCTGAGCCTGTGGCACAGCCCTGCATTGCCTGCTGTGGGCTCCAAG  
 ATGAAGCTGGAGGATGCGAAGGATCCCGTACAACCAACAGGATGCCTGAGGAAGATTTGTG

AG**CGGACCG**ACGCGTACGCGGCCGCTCGAGCAGAACTCATCTCAGAAGAGGATCTGGCAGCAAATGATATCC  
 TGGATTACAAGGATGACGACGATAAGGTTAA

**Protein Sequence:**

>MR209101 representing NM\_001082535  
 Red=Cloning site Green=Tags(s)

MACLSLHPLGSLLLLFLLLLSPPEARGEYGLVRVSKNWSKDYCVLYSSDYVNLPRDLHHPALLSLHDG  
 TKTPWCPDEDSFHQAQDSSPRQRPLHQTTMTRGNCSFYAKGWLAAQDQGAQGLLIVSRARNQCSDTIS  
 KPQDPSKPWPALTIPIVAVLRYTDMLDIVSHTYGDTRVAMFAPLEPVTDYNMAIIFILAVGTVAAGGYW  
 AGLMEANKLQRRQAQRGGGLGGHNQQTVAAERSQRAWEDDDFEDAPMDFTPAMTGAVVTMCSIMILLY  
 FFYDCFVYVMIGIFSLGASTGLYSCLAPILCHLPLWRYQWVLPQQRVSVTWPLLLLAGLCAMVTVLWVIH  
 RNEDHWAWLLQDTLGVAYCLFVLRRLPTFKNCTLFLALLAFDVFVFIPLFKTGESIMVEVASGP  
 ADSSSHERLPMVLKVPRLSFSALTLGNQPFILGFGDIVVPGFLVAYCHRFDMQVQSRQVYVMACVAYA  
 VGLLVTFVAMILMQMQPALLYLVSTLLTSLAVATCRQEFLLFWTGQGRAKIPAEPVAQPICIASAVGSK  
 MKLEDKDSRTTNRMPEDFV

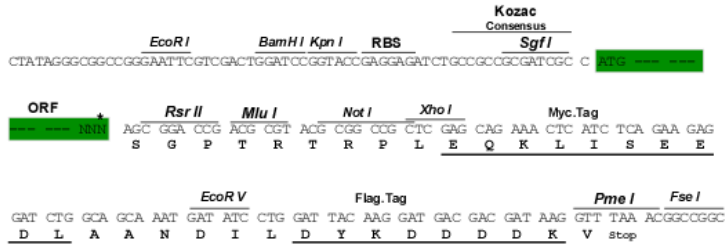
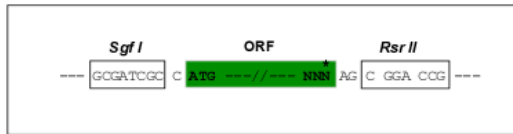
SGP**TRRRLEQKLI**SEEDLAANDILDYKDDDDKV

**Restriction Sites:**

Sgfl-RsrII

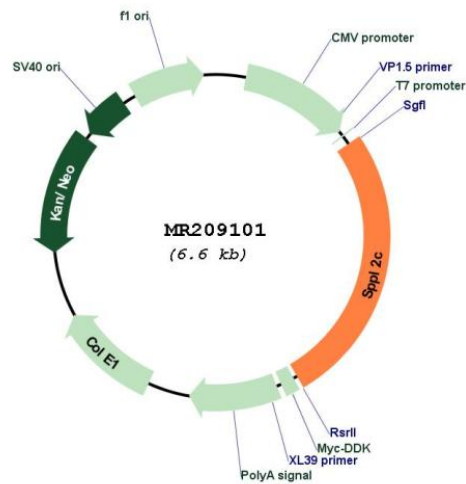
Cloning Scheme:

Cloning sites used for ORF Shuttling:



\* The last codon before the Stop codon of the ORF

Plasmid Map:



ACCN: NM\_001082535

ORF Size: 1743 bp

<b>OTI Disclaimer:</b>	The molecular sequence of this clone aligns with the gene accession number as a point of reference only. However, individual transcript sequences of the same gene can differ through naturally occurring variations (e.g. polymorphisms), each with its own valid existence. This clone is substantially in agreement with the reference, but a complete review of all prevailing variants is recommended prior to use. <a href="#">More info</a>
<b>OTI Annotation:</b>	This clone was engineered to express the complete ORF with an expression tag. Expression varies depending on the nature of the gene.
<b>Components:</b>	The ORF clone is ion-exchange column purified and shipped in a 2D barcoded Matrix tube containing 10ug of transfection-ready, dried plasmid DNA (reconstitute with 100 ul of water).
<b>Reconstitution Method:</b>	<ol style="list-style-type: none"><li>1. Centrifuge at 5,000xg for 5min.</li><li>2. Carefully open the tube and add 100ul of sterile water to dissolve the DNA.</li><li>3. Close the tube and incubate for 10 minutes at room temperature.</li><li>4. Briefly vortex the tube and then do a quick spin (less than 5000xg) to concentrate the liquid at the bottom.</li><li>5. Store the suspended plasmid at -20°C. The DNA is stable for at least one year from date of shipping when stored at -20°C.</li></ol>
<b>RefSeq:</b>	<a href="#">NM_001082535.1</a> , <a href="#">NP_001076004.1</a>
<b>RefSeq Size:</b>	2250 bp
<b>RefSeq ORF:</b>	1746 bp
<b>Locus ID:</b>	237958
<b>UniProt ID:</b>	<a href="#">A2A6C4</a>
<b>Cytogenetics:</b>	11 E1
<b>MW:</b>	65.1 kDa
<b>Gene Summary:</b>	Intramembrane-cleaving aspartic protease (I-CLiP) that may be able to cleave type II membrane signal peptides in the hydrophobic plane of the membrane.[UniProtKB/Swiss-Prot Function]