

Product datasheet for **MR209090**

Rapgef5 (BC046627) Mouse Tagged ORF Clone

Product data:

Product Type:	Expression Plasmids
Product Name:	Rapgef5 (BC046627) Mouse Tagged ORF Clone
Tag:	Myc-DDK
Symbol:	Rapgef5
Synonyms:	mmr-gef, mKIAA0277, 4932413M22, GFR
Mammalian Cell Selection:	Neomycin
Vector:	pCMV6-Entry (PS100001)
E. coli Selection:	Kanamycin (25 ug/mL)



[View online »](#)

ORF Nucleotide Sequence:

>MR209090 ORF sequence
 Red=Cloning site Blue=ORF Green=Tags(s)

TTTTGTAATACGACTCACTATAGGGCGGCCGGAATTCGTCGACTGGATCCGGTACCGAGGAGATCTGCC
 GCC**CGCATCGCC**

ATGGGCAGCTCCCGCTTTCGGGTCTTTGACCCCTCTAGAGAGGAAAGATTCGCGGGCTCTCAGAGC
 GCCAGCTGCCCTTGCTACCTTCGATGTGCCTTATTTCAAATACATCGACGAAGAAGATGAGGACGATGA
 ATGGAGCAGCCGCTCACAGTCTTCCACGGAGGATGACTCGGTGGACTCTCTGCTCTCTGACAGATATGTG
 GTGGTGTCTGGTACCCCGGAGAAGATCTTGAGACACCTTTTGAATGACTTGCACCTGGCAGAGGTTGAGC
 ACAAGAAGAAACAGAAACACTCCTTGATGACTTCTCCTCACGTACACCGTATTCATGACAACCTGATGACTT
 GTGCCAGGCGCTGCTAAGACACTATTCTGCCAAGAAGTATCAAGGGGAAGAAGAAAACCTCAGATGTCCCT
 TGTCCGGAAGCGCAAGGTCTTACATCTGGTTTCCAGTGGATTTCTCTGTACAAGGACTGGCTACATGAAG
 ATGAGCATTCAAAAATGTTTCTAAAGACCATATACAGGAACGTGCTGGATGATGTCTATGATACCCGAT
 TCTTGAGAAAGAGCTGAAAGAGTTTCAGAAGATACTTGGCGTGTACCGCCGTCACTGTTGATGAATAC
 TCACCACAGAAGAAGAATAAGCCCTTTTCCACCAATTCAGTCTTAAGGAGAAGCTGGCTCCAGCAGAGAG
 GAACTGTGGCAGAAACAGAGGAAATTTTTGCCACGTGTATAACGGAGCACTCTATATCAGTGTGAA
 GGCAAAAGTGTGAGTACAGCCAGGAGATCCTGAAGGTCGTGGCCGAGAAGCTGCAGCGTGCCAAAGAG
 GATCTGGCTCTGGTAGCCATTACATTCTCTGGAGAAAAGCATGAATTTACGCCAAATGACTTGGCCATTT
 CCAAAATCCCTGGAGGCATCTGGTCGGATATATGTCTACCGAAAAGATCTGGCTGACACTTTGAATCCTTT
 GGCAGAAAATGAGGAATCCAGCAAAGGTCAATGAGGATTTTGGGGATGAACACGTGGGACCTTGCTCTG
 GAATTAATGAGTTTTGATTGGAGTCTGTTCAATCAATCCACGAGCAAGAGCTGATCTACTTCACATTCA
 GCAGACAGGGGAACGGAGAGAATACTGTGAACCTCAGCCTTCTGCTCCAGAGATGTAACGAGGTCAGCT
 CTGGGTAGCCACAGAGATTTCTGCTCTGCAGCCAGCTAGGCAAGCGGTGACAGCTGGTGAAAAAATTCATC
 AAGATTGCAGCTCACTGCAAAGCCCAACAGAACCTAAACTCTTTCTTTGCCATCGTGATGGGTCTCAACA
 CCGCCTCTGTCAGCCGGCTATCACAGACCTGGGAGAAAATCCCTGGGAAGTTTAAGAAGCTTTTCTCTGA
 ACTTGAGAGTTTAAACGGATCCTTCCCTAAACCACAAAGCCTACAGGGATGCGTTCAAAAAGATGAAGCCA
 CCAAAAATCCCTTTTATGCCCTTACTGCTTAAAGATGTAACGTTTATTTCATGAAGGAAATAAAACATTCT
 TGGATAATCTCGTCAATTTTAAAAGCTGCACATGATTGCAGACACTGTCCGAACCTGAGACACTGCAG
 GACTAACCAAGTTTGAAGTGACGTGTCTCAAAGGAGCAGCAAGAGCTGAAGTCTATGTCAACCACTG
 TATGTCATCGACAGCCAGCAAGCCCTGTTGAGCTCTCTCACAGGCTGGAGCCTCGAGCC

ACGCGTACGCGGGCCGCTCGAGCAGAAACTCATCTCAGAAGAGGATCTGGCAGCAAATGATATCCTGGATT
 ACAAGGATGACGACGATAAGGTTTAA

Protein Sequence:

>MR209090 protein sequence
 Red=Cloning site Green=Tags(s)

MGSSRLRVFDPPLERKDSAALSERQLPLPTFDVPYFKYIDEDEDEDEWSSRSQSSTEDDSVDSLSDRYV
 VVSGTPEKILEHLLNDLHLAEVQHKETETLLDDFLLTYTFVMTTDDLQALLRHYSAKKYQGEENSDVP
 CRKRKVLHLVSWIISLYKDWLHEDEHSMFLKTIYRNVLDDVYEPYLEKELKEFKILGVYRRHTVDEY
 SPQKKNKALFHQFSLKENWLQHRGTVAETEEIFCHVYITEHSYISVKAKVSSTAQEILKVVAEKLQRAKE
 DLALVAITFSGEKHEFQPNDLAISKSLEASGRIYVYRKDLADTLNPLAENEESSQQRSMRILGMNTWDLAL
 ELMSFDWSLFNSIHEQELIYFTFSRQNGENTVNL SLLLQRCNEVQLWVATEILLCSQLGKRVQLVKKFI
 KIAAHCKAQQNLNSFFAIVMGLNTASVSRLSQTWEKIPGKFKLFFSELESLTDP SLNHKAYRDAFKMKP
 PKIPFMPLLLKDVTFIHEGNKTFLDNLVNFELHMIADTVRTL RHCRTNQFGSDVSPKEQQELKSYVNH
 YVIDSQALFELSHRLEPRA

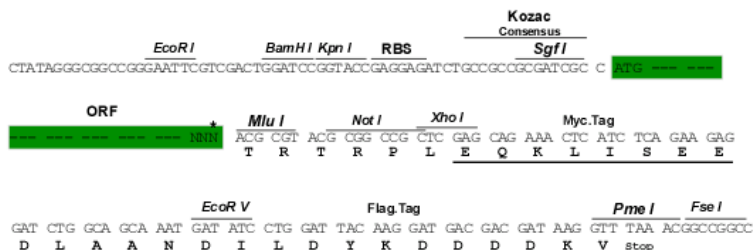
TRTRPLEQKLISEEDLAANDILDYKDDDDKV

Restriction Sites:

Sgfl-MluI

Cloning Scheme:

Cloning sites used for ORF Shuttling:



* The last codon before the Stop codon of the ORF

ACCN: BC046627

ORF Size: 1740 bp

OTI Disclaimer: The molecular sequence of this clone aligns with the gene accession number as a point of reference only. However, individual transcript sequences of the same gene can differ through naturally occurring variations (e.g. polymorphisms), each with its own valid existence. This clone is substantially in agreement with the reference, but a complete review of all prevailing variants is recommended prior to use. [More info](#)

OTI Annotation: This clone was engineered to express the complete ORF with an expression tag. Expression varies depending on the nature of the gene.

Components: The ORF clone is ion-exchange column purified and shipped in a 2D barcoded Matrix tube containing 10ug of transfection-ready, dried plasmid DNA (reconstitute with 100 ul of water).

Reconstitution Method:

1. Centrifuge at 5,000xg for 5min.
2. Carefully open the tube and add 100ul of sterile water to dissolve the DNA.
3. Close the tube and incubate for 10 minutes at room temperature.
4. Briefly vortex the tube and then do a quick spin (less than 5000xg) to concentrate the liquid at the bottom.
5. Store the suspended plasmid at -20°C. The DNA is stable for at least one year from date of shipping when stored at -20°C.

RefSeq: [BC046627](#), [AAH46627](#)

RefSeq Size: 2954 bp

RefSeq ORF: 1742 bp

Locus ID: 217944

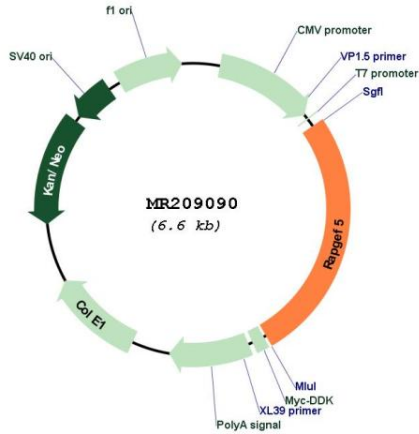
Cytogenetics: 12 F2

MW: 67.5 kDa

Gene Summary:

Guanine nucleotide exchange factor (GEF) for RAP1A, RAP2A and MRAS/M-Ras-GTP. Its association with MRAS inhibits Rap1 activation (By similarity).[UniProtKB/Swiss-Prot Function]

Product images:



Circular map for MR209090