

Product datasheet for **MR209049**

Thbd (NM_009378) Mouse Tagged ORF Clone

Product data:

Product Type:	Expression Plasmids
Product Name:	Thbd (NM_009378) Mouse Tagged ORF Clone
Tag:	Myc-DDK
Symbol:	Thbd
Synonyms:	A1385582; CD141; TM
Mammalian Cell Selection:	Neomycin
Vector:	pCMV6-Entry (PS100001)
E. coli Selection:	Kanamycin (25 ug/mL)



[View online »](#)

ORF Nucleotide Sequence:

>MR209049 ORF sequence
 Red=Cloning site Blue=ORF Green=Tags(s)

TTTTGTAATACGACTCACTATAGGGCGGCCGGGAATTCGTCGACTGGATCCGGTACCGAGGAGATCTGCC
 GCC**CGGATCGCC**

ATGCTTGGGATTTTCTTTCTGGGTGTGCTGGCTCCAGCTAGCCTGGGGCTCTCCGCACTAGCCAAGCTGC
 AGCCACAGGCAGTCAATGCGTGGAGCATGAGTGCCTTCGCGCTTTTCCAGGGCCCCGCGACCTTCCTCGA
 TGCCAGCCAGGCCTGCCAGCGCCTGCAAGGACATTTGATGACAGTGCCTCCTCAGTGGCTGCCGATGTC
 ATCTCCCTTCTGCTGAGCCAGAGCAGTATGGATTTAGGGCCCTGGATCGGTTTACAGCTCCCGCAGGGCT
 GTGACGACCCGGTGCATCTCGGGCCCTGCGCGGCTTCCAGTGGGTTACTGGCGATAACCACACCAGTTA
 CAGCAGGTGGGCGCGGCCAACGACCAGACGGCTCCACTCTGCGGCCCTGTGCGTCACGGTCTCGACA
 GCAACTGAAGTGCACCCGGCGAGCCGGCTGGGAAGAGAAGCCATGCGAGACTGAGACCCAGGGTTTCC
 TCTGTGAGTTTTACTTACAGCTTCTGCAGGCCCTGACGGTGAATACTCGCGATCCTGAGGCTGCCCA
 CATCTCTAGTACCTACAACACCCGTTCCGGGTGAGTGGTGCAGGACTTTCAAACGCTGCCGTTAGGCAGT
 TCCGCCCGGGTGGAGCCCTTGGCTTGGAGCTGGTGTGCAGGGCCCCGCCGGAACCTCAGAGGGACACT
 GGGCTTGGGAAGCGACAGGAGCCTGGAATTGCAGCGTGGAGAATGGTGGCTGTGAGTACTTGTGCAATAG
 GAGCACGAATGAACCCAGATGCCTCTGCCCCAGAGACATGGACCTGCAGGCCGATGGACGTTCTGTGTGA
 AGACCTGTGGTTCAATCGTGAACGAACCTGCGAGCATTTTTGTGTCAGCAACGCTGAAGTGCCAGGCT
 CTTACTCTGTATGTGTGAGACAGGCTACCAGTTGGTGCAGACGGACACCGGTGTGAGGACGTGGATGA
 CTGTAAGCAGGGGCCAATCCAATGTCACCGCTCTGTGTTAACACCAAGGGCGGCTTCAATGCTTCTGC
 TATGATGGCTATGAGTTGGTGGATGGAGAGTGCCTGGAGCTTCTGGATCCGTGTTCCGATCAACTGCC
 AGTTTTCACTGACAGCCAGTGCAGCCACCGACTACCGATGCATCTGCGCTCCGGGCTTCCGACCCAAAGC
 GGATGAACCGCACAAAGTGCAGAAATGTTCTGCAATGAAACTTCGTGCCAGCAGACTGTGACCCCTAACTCT
 CCTACTGTTTGTGAATGCCCTGAAGGCTTCATCCTGGACGAGGGTCCGTATGCACGGACATTGATGAGT
 GCAGTCAAGGTGAATGCTTACCAGTGAATGTCGAAACTTCCCTGGCTCCTATGAGTGTATCTGCGGGCC
 TGACACAGCCCTTGTGGTCAAGTATAGCAAAGACTGTGACCCCATCCCTGTTAGGGAAGACACCAAGGAA
 GAGGAGGGCTCTGGGAGCCTCCAGTACGCCCTACGCCAGGCTCTCCGACAGGTCCCCCTTCTGCAAGGC
 CAGTGCCTCTGGCGTGTCTATTGGCATCTCCATTGCCAGCCTGTCCCTGGTGGTGGCGCTTTTGGCGCT
 TCTCTGTACCTGCGCAAGAAGCAGGGCGCTGCTCGCGCAGAGCTGGAGTACAAGTGCAGCATCTCCGCC
 AAGGAGGTAGTGTGCAGCACGTGAGACTGATCGGACGCTGCAGAAGTTC

ACGCGTACGCGGGCCGCTCGAGCAGAAACTCATCTCAGAAGAGGATCTGGCAGCAAATGATATCCTGGATT
 ACAAGGATGACGACGATAAGGTTTAA

Protein Sequence:

>MR209049 protein sequence
 Red=Cloning site Green=Tags(s)

MLGIFFLVGLAPASLGLSALAKLQPTGSQCVEHECFALFQGPATFLDASQACQRLQGHLMTVRSSVAADV
 ISLLLLSQSSMDLGPWIGLQLPQGCDDPVHLGPLRGFQWVTDGNHTSYSRWARPNQDAPLCGPLCVTVST
 ATEAAPGEPAWEEKPCETETQGFLECFYFTASCRPLTVNTRDPEAAHISSTYNTPFVSGADFQTLPVGS
 SAAVEPLGLELVCRAPPGTSEGHWAWEATGAWNCSVENGGCEYL CNRSTNEPRCLCPRDMDLQADGRSCA
 RPVVQSCNELCEHFCVSNAEVPGSYSCMCETGYQLAADGHRCEDVDDCKQGNPCPQLCVNTKGGFECFC
 YDGYELVDGECVELLDPCFGSNCFQCQPVSPDYRCICAPGFAPKPDEPHKCEMF CNETSCPADCDPNS
 PTVCECEPGFILDGFSVCTDIDECSSQGEFTSECRNFPGSYECICGPDALAGQISKDCDPIPVREDTKE
 EEGSGEPPVSPTPGSPTGPPSARPVHSGVLIGISIASLSLVALLALLCHLRKKQGAARAELEYKCASSA
 KEVVLQHVTRDRTLQKF

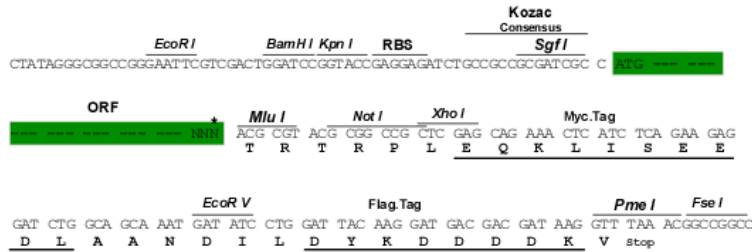
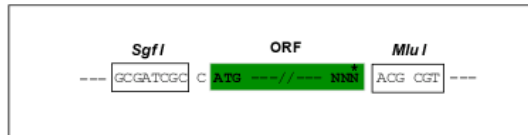
TRTRPLEQKLISEEDLAANDILDYKDDDDKV

Restriction Sites:

Sgfl-MluI

Cloning Scheme:

Cloning sites used for ORF Shuttling:



* The last codon before the Stop codon of the ORF

ACCN: NM_009378

ORF Size: 1734 bp

OTI Disclaimer: The molecular sequence of this clone aligns with the gene accession number as a point of reference only. However, individual transcript sequences of the same gene can differ through naturally occurring variations (e.g. polymorphisms), each with its own valid existence. This clone is substantially in agreement with the reference, but a complete review of all prevailing variants is recommended prior to use. [More info](#)

OTI Annotation: This clone was engineered to express the complete ORF with an expression tag. Expression varies depending on the nature of the gene.

Components: The ORF clone is ion-exchange column purified and shipped in a 2D barcoded Matrix tube containing 10ug of transfection-ready, dried plasmid DNA (reconstitute with 100 ul of water).

Reconstitution Method:

1. Centrifuge at 5,000xg for 5min.
2. Carefully open the tube and add 100ul of sterile water to dissolve the DNA.
3. Close the tube and incubate for 10 minutes at room temperature.
4. Briefly vortex the tube and then do a quick spin (less than 5000xg) to concentrate the liquid at the bottom.
5. Store the suspended plasmid at -20°C. The DNA is stable for at least one year from date of shipping when stored at -20°C.

RefSeq: [NM_009378.1](#), [NM_009378.2](#), [NM_009378.3](#), [NP_033404.1](#)
RefSeq Size: 3718 bp

RefSeq ORF: 1734 bp

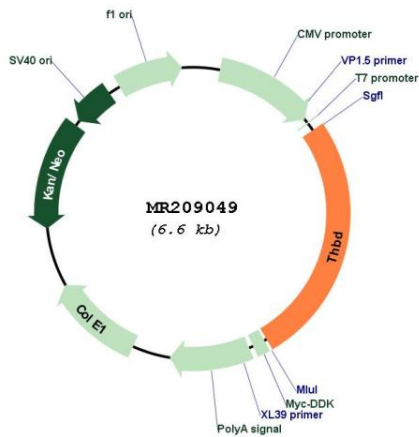
Locus ID: 21824

UniProt ID: [P15306](#)
Cytogenetics: 2 73.45 cM

MW: 61.9 kDa

Gene Summary: Thrombomodulin is a specific endothelial cell receptor that forms a 1:1 stoichiometric complex with thrombin. This complex is responsible for the conversion of protein C to the activated protein C (protein Ca). Once evolved, protein Ca scissions the activated cofactors of the coagulation mechanism, factor Va and factor VIIIa, and thereby reduces the amount of thrombin generated.[UniProtKB/Swiss-Prot Function]

Product images:



Circular map for MR209049