

Product datasheet for **MR209010**

St7 (BC024652) Mouse Tagged ORF Clone

Product data:

Product Type:	Expression Plasmids
Product Name:	St7 (BC024652) Mouse Tagged ORF Clone
Tag:	Myc-DDK
Symbol:	St7
Synonyms:	RAY1, HELG, SEN4, TSG7
Vector:	pCMV6-Entry (PS100001)
E. coli Selection:	Kanamycin (25 ug/mL)
Cell Selection:	Neomycin



[View online »](#)

ORF Nucleotide Sequence:

>MR209010 ORF sequence
 Red=Cloning site Blue=ORF Green=Tags(s)

TTTTGTAATACGACTCACTATAGGGCGGCCGGGAATTCGTCGACTGGATCCGGTACCGAGGAGATCTGCC
 GCC**CGCATCGCC**

ATGGCCGAGGCGGGCGGGCTTCTGGAGCAGCTCAAGTCTGCATCGTGTGGTCTGGACCTATCTGT
 GGACCGTGTGGTTCTTCTCGTCTCTTCTGGTCTACATCCTGAGGGTGCCCTGAGGATCAACGACAA
 CCTGAGCACAGTGAAGTGTGTTTGAACACGTTAACCCCAAAGTTCTACGTGGCCCTGACAGGCACTTCC
 TCGCTAATATCGGGACTTATTTTGATATTTGAATGGTGGTATTTTCGCAAGTATGGAACATCTTTCATTG
 AACAAAGTCTCCGTAAAGCCACTTGCGCCCTTCTGGGAGGGGTTGACAACAACCTTCCAATAATTCTAA
 TTCCAGTAAATGGAGACTCAGATTCCAACAGACAAAGTGTCTCAGAATGCAAAGTATGGCGAAATCCACTG
 AATCTGTTTAGGGGTGCGGAATAAATCGGTACACTTGGGTCACAGGACGAGAGCCTCTGACCTACTATG
 ACATGAACCTCTCTGCCAGGACCACCAGACATTTTACTTGTGATTGAGATCATCTTCGCCCTGCAGA
 TGCAATAATGCAAAAAGCTTGGAGAGAAAGGAACCTCAAGCCAGGATTTCTGCAGCTCATGAAGCCTTG
 GAGATAAACGAAATTAGTCCAGAGTTGAAGTTCCTCAATTGCTTCTACCATCTGGGAGATAAAAT
 TGTACCAAAGTGTGCAACTGCGTACATTTCTTGGCGGAAGAAGAAGCGACAACCTATTGCTGAAGCAGA
 AAAACTCTTTAAGCAGGCCCTGAAGGCTGGAGATGGTTGTTACCGGCGCTCTCAGCAGCTACAACATCAT
 GGGTCCCAGTATGAAGCTCAACACAGACGAGACACCAATGTCTTAGTCTATATCAAAAAGAAGGCTGGCGA
 TGTGTGCCCGGAGACTTGAAGGACCAGAGAAGCAGTGAAGATGATGAGAGATTTAATGAAGGAGTTTCC
 CCTCCTAAGCATGTTCAATATCCATGAGAACCTTCTAGAAGCTCTTCTGGAACCTCAAGCTTATGCTGAT
 GTTCAGGCAGTCTTAGCAAAGTATGATGATATAAGCTTACCAAAGTCGGCGACAATATGCTACACAGCCG
 CCTGCTCAAAGCAAGAGCTGTCTCTGACAAATCTCTCCAGAGGCTGCGTCTCGGAGGGGCTGAGCAC
 AGCAGAGATGAATGCAGTAGAAGCCATCCACAGAGCTGTGGAATTAATCCACACGTGCCAAAATATCTA
 CTAGAAATGAAAAGCTTAACTCTCCACCAAGAACACATCTGAAGAGAGGAGACAGTGAAGCGATAGCAT
 ATGCATCTTTTCACTCGCACACTGGAAGAGGGTGAAGGGGCTTTGAATCTCTTGCATTCTTCCGGAT
 GATCCCGTATCCCTGGAGAAGGACACCTATTTTATCCATACCCAATCTGTACAGAAACAGCTGACCGG
 GAGCTGCTTCCCTCTTCCATGAAGTCTCAGTTTACCAAAGAAGGAACCTCCCTTCTTCACTCTTCA
 CTGCTGGACTGTCTCCTCACAGCCATGCTGGCCCTCCTGACACATCAGTTTCCGGAACCTATGGGAGT
 CTTGCGAAAAGCTTCTCAGCACTTTGTTTGGCCCTTGAACCTTGTATGGAGAAAGTGGAAAGCATC
 TCCCCCTCCAGTTTGTGGCATCAGCTGACACGGATC

ACGCGTACGCGGCCGCTCGAGCAGAAACTCATCTCAGAAGAGGATCTGGCAGCAAATGATATCCTGGATT
 ACAAGGATGACGACGATAAGGTTTAA

Protein Sequence:

>MR209010 protein sequence
 Red=Cloning site Green=Tags(s)

MAEAGAGFLEQLKSCIVSWTYLWTVWFFLVFLVYILRVPLRINDNLSTVSMFLNLTLPKFYVALTGTS
 SLISGLILIFEWYFRKYGTSFIEQVSVSHLRPLLGGVDNNSNNSNNGSDSNRQSVSECKVWRNPL
 NLRGAEYNRYTWTGREPLTYDMNLSAQDHQTFCTCSDHLRPADAIMQKAWRERNPQARISAAHEAL
 EINEIRSRVEVPLIASSTIWEIKLLPKCATAYILLAEAEATTIAEAEKLFKQALKAGDGCYRRSQQLQHH
 GSQYEAQHRRDNLVYIKRRLAMCARRLGRTRAVKMMRDLMKFPLLSMFNIHENLLEALLELQAYAD
 VQAVLAKYDDISLPKSATICYTAALLKARAVSDF SPEAASRRGLSTAEMNAVEAIHRAVEFNPHVPKYL
 LEMKSLILPPEHILKRGDSEAIAYAFFHLAHWKRVEGALNLLHSFRMIPYPLEKGLFYPICTETADR
 ELLPSFHEVSVYPKELPFFILFTAGLCSFTAMLALLTHQFPELMGVFAKAFSTLFAPLNFVMEKVESI
 LPSSLWHQLTRI

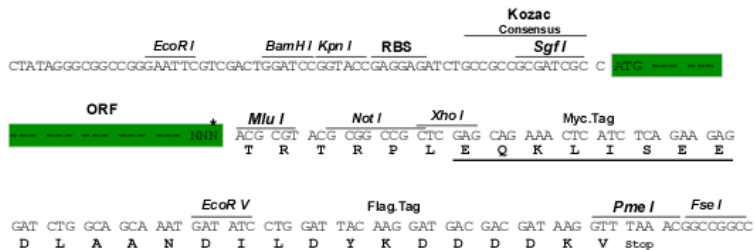
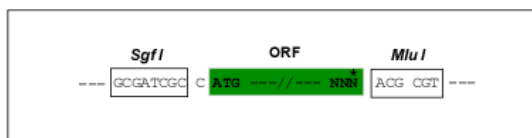
TRTRPLEQKLISEEDLAANDILDYKDDDDKV

Restriction Sites:

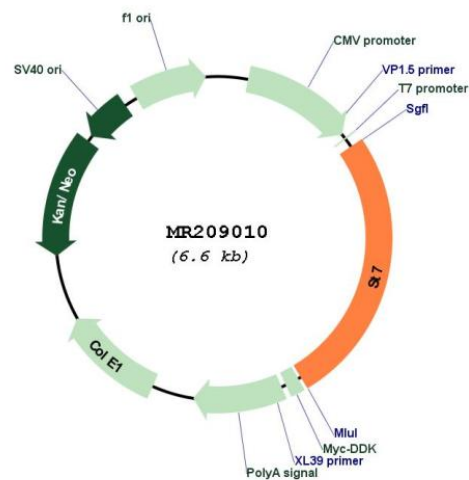
Sgfl-MluI

Cloning Scheme:

Cloning sites used for ORF Shutting:



* The last codon before the Stop codon of the ORF

Plasmid Map:


ACCN: BC024652

ORF Size: 1716 bp

OTI Disclaimer:	The molecular sequence of this clone aligns with the gene accession number as a point of reference only. However, individual transcript sequences of the same gene can differ through naturally occurring variations (e.g. polymorphisms), each with its own valid existence. This clone is substantially in agreement with the reference, but a complete review of all prevailing variants is recommended prior to use. More info
OTI Annotation:	This clone was engineered to express the complete ORF with an expression tag. Expression varies depending on the nature of the gene.
Components:	The ORF clone is ion-exchange column purified and shipped in a 2D barcoded Matrix tube containing 10ug of transfection-ready, dried plasmid DNA (reconstitute with 100 ul of water).
Reconstitution Method:	<ol style="list-style-type: none"> 1. Centrifuge at 5,000xg for 5min. 2. Carefully open the tube and add 100ul of sterile water to dissolve the DNA. 3. Close the tube and incubate for 10 minutes at room temperature. 4. Briefly vortex the tube and then do a quick spin (less than 5000xg) to concentrate the liquid at the bottom. 5. Store the suspended plasmid at -20°C. The DNA is stable for at least one year from date of shipping when stored at -20°C.
RefSeq:	BC024652 , AAH24652
RefSeq Size:	2208 bp
RefSeq ORF:	1718 bp
Locus ID:	64213
Cytogenetics:	6 A2
MW:	65.5 kDa