

Product datasheet for MR208877L2

Sptlc2 (NM_011479) Mouse Tagged Lenti ORF Clone

Product data:

Product Type:	Expression Plasmids
Product Name:	Sptlc2 (NM_011479) Mouse Tagged Lenti ORF Clone
Tag:	mGFP
Symbol:	Sptlc2
Synonyms:	LCB; LCB2; LCB2a; Sp; Spt2
Mammalian Cell Selection:	None
Vector:	pLenti-C-mGFP (PS100071)
E. coli Selection:	Chloramphenicol (34 ug/mL)
ORF Nucleotide Sequence:	The ORF insert of this clone is exactly the same as(MR208877).
Restriction Sites:	SgfI-MluI
Cloning Scheme:	

Cloning sites used for ORF Shuttling:



* The last codon before the Stop codon of the ORF.

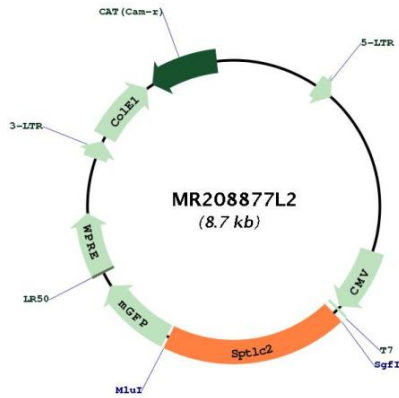
ACCN:	NM_011479
ORF Size:	1683 bp



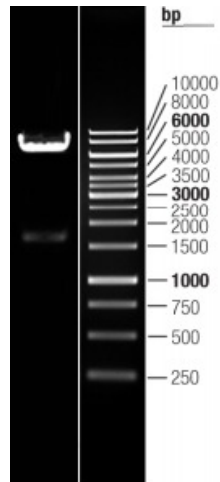
[View online »](#)

OTI Disclaimer:	The molecular sequence of this clone aligns with the gene accession number as a point of reference only. However, individual transcript sequences of the same gene can differ through naturally occurring variations (e.g. polymorphisms), each with its own valid existence. This clone is substantially in agreement with the reference, but a complete review of all prevailing variants is recommended prior to use. More info
OTI Annotation:	This clone was engineered to express the complete ORF with an expression tag. Expression varies depending on the nature of the gene.
Components:	The ORF clone is ion-exchange column purified and shipped in a 2D barcoded Matrix tube containing 10ug of transfection-ready, dried plasmid DNA (reconstitute with 100 ul of water).
Reconstitution Method:	<ol style="list-style-type: none">1. Centrifuge at 5,000xg for 5min.2. Carefully open the tube and add 100ul of sterile water to dissolve the DNA.3. Close the tube and incubate for 10 minutes at room temperature.4. Briefly vortex the tube and then do a quick spin (less than 5000xg) to concentrate the liquid at the bottom.5. Store the suspended plasmid at -20°C. The DNA is stable for at least one year from date of shipping when stored at -20°C.
RefSeq:	NM_011479.2 , NP_035609.1
RefSeq Size:	3754 bp
RefSeq ORF:	1683 bp
Locus ID:	20773
UniProt ID:	P97363
Cytogenetics:	12 D2
Gene Summary:	This gene encodes a long chain base subunit of serine palmitoyltransferase. The enzyme, serine palmitoyltransferase, consists of two different subunits, and is the key enzyme in sphingolipid biosynthesis. It catalyzes the pyridoxal-5-prime-phosphate-dependent condensation of L-serine and palmitoyl-CoA to 3-oxosphinganine. A mutant allele of this gene in mice is used as a model for the human disease 'Susceptibility to Psoriasis 1'. Mutations in the human gene are associated with hereditary sensory neuropathy type I. [provided by RefSeq, Sep 2015]

Product images:



Circular map for MR208877L2



Double digestion of MR208877L2 using SgfI and MluI