

Product datasheet for MR208868L3

Plat (NM_008872) Mouse Tagged Lenti ORF Clone

Product data:

Product Type:	Expression Plasmids
Product Name:	Plat (NM_008872) Mouse Tagged Lenti ORF Clone
Tag:	Myc-DDK
Symbol:	Plat
Synonyms:	AU020998; AW212668; D8Ertd2; D8Ertd2e; t; t-; tPA
Mammalian Cell Selection:	Puromycin
Vector:	pLenti-C-Myc-DDK-P2A-Puro (PS100092)
E. coli Selection:	Chloramphenicol (34 ug/mL)
ORF Nucleotide Sequence:	The ORF insert of this clone is exactly the same as(MR208868).
Restriction Sites:	SgfI-MluI
Cloning Scheme:	

Cloning sites used for ORF Shuttling:



* The last codon before the Stop codon of the ORF.

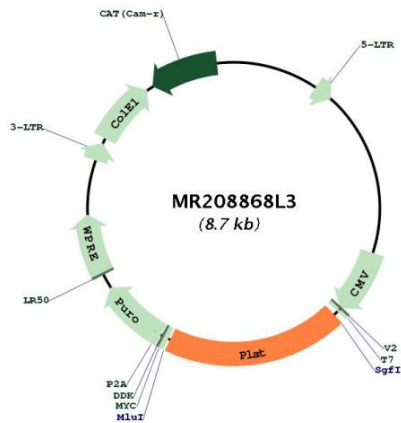
ACCN:	NM_008872
ORF Size:	1680 bp



[View online »](#)

OTI Disclaimer:	The molecular sequence of this clone aligns with the gene accession number as a point of reference only. However, individual transcript sequences of the same gene can differ through naturally occurring variations (e.g. polymorphisms), each with its own valid existence. This clone is substantially in agreement with the reference, but a complete review of all prevailing variants is recommended prior to use. More info
OTI Annotation:	This clone was engineered to express the complete ORF with an expression tag. Expression varies depending on the nature of the gene.
Components:	The ORF clone is ion-exchange column purified and shipped in a 2D barcoded Matrix tube containing 10ug of transfection-ready, dried plasmid DNA (reconstitute with 100 ul of water).
Reconstitution Method:	<ol style="list-style-type: none"> 1. Centrifuge at 5,000xg for 5min. 2. Carefully open the tube and add 100ul of sterile water to dissolve the DNA. 3. Close the tube and incubate for 10 minutes at room temperature. 4. Briefly vortex the tube and then do a quick spin (less than 5000xg) to concentrate the liquid at the bottom. 5. Store the suspended plasmid at -20°C. The DNA is stable for at least one year from date of shipping when stored at -20°C.
RefSeq:	NM_008872.1 , NP_032898.1
RefSeq Size:	2548 bp
RefSeq ORF:	1680 bp
Locus ID:	18791
UniProt ID:	P11214
Cytogenetics:	8 11.42 cM
Gene Summary:	This gene encodes a key enzyme of the fibrinolytic pathway. The encoded protein undergoes proteolytic processing by plasmin to generate a heterodimeric serine protease that cleaves the proenzyme plasminogen to produce plasmin, a protease that is required to break down fibrin clots. Additionally, the encoded protein is involved in other biological processes such as synaptic plasticity, cell migration and tissue remodeling. Mice lacking the encoded protein display a reduction in long-term potentiation in hippocampus and conversely, transgenic mice overexpressing the encoded protein have increased and prolonged long-term potentiation. [provided by RefSeq, Jul 2015]

Product images:



Circular map for MR208868L3