

## Product datasheet for **MR208807**

### Stk39 (NM\_016866) Mouse Tagged ORF Clone

#### Product data:

Product Type:	Expression Plasmids
Product Name:	Stk39 (NM_016866) Mouse Tagged ORF Clone
Tag:	Myc-DDK
Symbol:	Stk39
Synonyms:	AW227544; AW556857; DCHT; RF005; Rnl5; SPAK
Vector:	pCMV6-Entry (PS100001)
E. coli Selection:	Kanamycin (25 ug/mL)
Cell Selection:	Neomycin



[View online »](#)

**ORF Nucleotide Sequence:**

>MR208807 representing NM\_016866  
 Red=Cloning site Blue=ORF Green=Tags(s)

TTTTGTAATACGACTCACTATAGGGCGGCCGGGAATTCGTCGACTGGATCCGGTACCGAGGAGATCTGCC  
 GCC**GCGATCGCC**

ATGGCGGAGCCGAGCGGCTCGCTGTGCACGTCCAGCTTCCAGCAGGCGGCCCGGTGACAGCGGCGG  
 CGGCGACGGCCCCGGCGGCCGACATCAGACCAGCCCCGGCCCCGGCTCCGGCGGCTCCGC  
 AGCCCCGGCCCCGGCTCCAGCTGCTGCTCCAGCCCCGGCCCCGGCAGCTCAGGCGGTCCGCTGGCCCATC  
 TGCAGGACGCGTACGAGCTCCAGGAGTTATCGGCAGCGGAGCAACTGCGGTGGTTCAGGCAGCCCTAT  
 GCAAACCCAGGCAAGAACGCGTAGCCATAAAGCGGATCAACTGGAAAAATGCCAGACGAGTATGGATGA  
 ACTCCTGAAAGAAATCAAGCCATGAGCCAATGCAGCCATCCCAACGTAGTGACTTATTACCTCTTT  
 GTGGTCAAAGATGAGCTGTGGTGGTCAATGAAATTAAGTGGAGGTTCCATGTTGGATATCATCAAT  
 ACATCGTTAATCGAGGAGAACATAAAAAATGGTGTCTAGAAGAGGCGATAATTGCAACAATCTTAAGGA  
 GGTTTTGGAAGGTTAGACTATCTGCACAGAAACGGTCAGATCCATAGGGATTTGAAAGCTGAAATATT  
 CTTCTGGGTGAGGATGGCTCAGTACAAATAGCAGATTTTGGAGTAAGCGCATTCTTAGCCACAGGGGGTG  
 ATGTTACACGGAATAAGTCAGAAAAACATTTGTTGGTACCCCATGTTGGATGGCCCCTGAAGTCATGGA  
 ACAGGTGAGAGCTATGACTTCAAGGCTGATATGTGGAGTTTGGAACTGCCATTGAATTAGCAACC  
 GGAGCAGCGCCTTACCACAAATACCCCTCAATGAAAGTCTAATGCTGACTTTGCAAAATGACCCGCCCA  
 CTTTAGAACTGGTGTAGAGGATAAAGAAATGATGAAAAAATACGGCAAGTCTTCAGAAAGTTACTGTC  
 ACTGTGCTTTCAGAAAGATCCTTCCAAAAGGCCACAGCAGCAGAAGTTTAAATGCAAGTTCTTCCAG  
 AAAGCCAAGAACAGAGAGTACCTGATCGAGAAGCTGCTGACAAGAACCCAGACATAGCCCAAAGAGCCA  
 AGAAGGTAAGGCGAGTTCCTGGTGCAGCGGTCACCTTCATAAGACTGAAGACGGCGACTGGGAGTGGAG  
 TGATGACGAGATGGATGAGAAGAGCGAGGAGGGGAAGGCAGCCGCTCCCAAGAGAAGTACGAAGAGTA  
 AAAGAAGAGAAGTACAGAGATCTCGGTGAATGCTGGTGGCATCCCTGAGCAAAATACAGTCTCTCTGTGC  
 ACGACTCTCAGGCCAACCAAACGCTAATGAAGACTACAGAGAAGGTCCTTGTGCAGTCAACCTGTTTT  
 AAGATTAAGAACTCCAGAAAGGAACCTAATGACATACGATTTGAGTTTACTCCAGGAAGAGATACAGCA  
 GACGGTGTGTCTCAGGAGCTCTCTCTGCTGGCTTGGTTGACGGCCATGATGTAGTTATAGTGGCTGCTA  
 ATTTACAGAAGATTGTAGATGACCCCAAAGCTTAAAAACGTTGACATTTAAGTTGGCTTCTGGCTCGCA  
 TGGGTCGGAGATTCCTGATGAAGTGAAGCTGATCGGGTTCGCCAGTTGAGTGTGAGC

AG**CGGACCG**ACGCGTACGCGGCCGCTCGAGCAGAACTCATCTCAGAAGAGGATCTGGCAGCAAATGATATCC  
 TGGATTACAAGGATGACGACGATAAGGTTTAA

**Protein Sequence:**

>MR208807 representing NM\_016866  
 Red=Cloning site Green=Tags(s)

MAEPSGSPVHVQLSQAAPVTAATAAPAAATSAPAPAPAPAPAASAAPAPAPAAAPAPAPAAQAVGWPI  
 CRDAYELQEVIGSGATAVVQAALCKPRQERVAIKRINLEKQTSMDLLKEIQAMSQCSPHNVVYYTFSF  
 VVKDELWLVMKLLSGGSMLDIKYYIVNRGEHKNGVLEEAIIATILKEVLEGLDYLHRNGQIHRDLKAGNI  
 LLGEDGSVQIADFGVSAFLATGGDVTRNKVRKTFVGTPCWMAPEVMEQVRGYDFKADMWSFGITAIELAT  
 GAAPYHKYPPMKVLMMLTLQNDPPTLETGVEDKEMMKYKGSFRKLLSLCLQKDPSCRPTAAELLKCKFFQ  
 KAKNREYLIEKLLTRTPDIAQRAKKVRRVPGSSGHLHKTEDGDWEWSDDEMEKSEEGKAAASQEKSRV  
 KEENSEISVNAGGIPEQIQSLSVHDSQAQPNANEDYREGPCAVNLVLRNRKELNDIRFEFTPRDRTA  
 DGVSQELFSAGLVDGHDVVIVAANLQKIVDDPKALKTLTFKLASGCDGSEIPDEVKLIQFAQLSVS

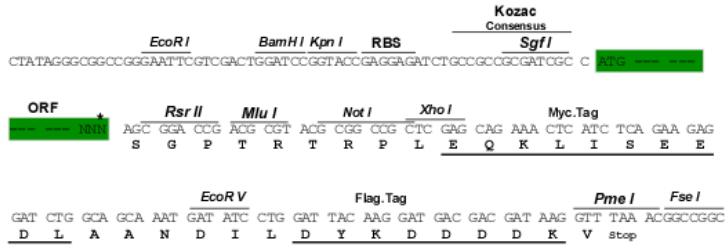
SGP**TRRRLEQKLI**SEEDLAANDILDYKDDDDKV

**Restriction Sites:**

Sgfl-RsrII

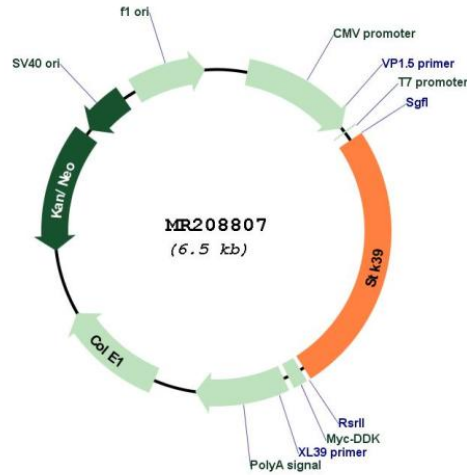
Cloning Scheme:

Cloning sites used for ORF Shuttling:



\* The last codon before the Stop codon of the ORF

Plasmid Map:



<b>ACCN:</b>	NM_016866
<b>ORF Size:</b>	1668 bp
<b>OTI Disclaimer:</b>	The molecular sequence of this clone aligns with the gene accession number as a point of reference only. However, individual transcript sequences of the same gene can differ through naturally occurring variations (e.g. polymorphisms), each with its own valid existence. This clone is substantially in agreement with the reference, but a complete review of all prevailing variants is recommended prior to use. <a href="#">More info</a>
<b>OTI Annotation:</b>	This clone was engineered to express the complete ORF with an expression tag. Expression varies depending on the nature of the gene.
<b>Components:</b>	The ORF clone is ion-exchange column purified and shipped in a 2D barcoded Matrix tube containing 10ug of transfection-ready, dried plasmid DNA (reconstitute with 100 ul of water).
<b>Reconstitution Method:</b>	<ol style="list-style-type: none"><li>1. Centrifuge at 5,000xg for 5min.</li><li>2. Carefully open the tube and add 100ul of sterile water to dissolve the DNA.</li><li>3. Close the tube and incubate for 10 minutes at room temperature.</li><li>4. Briefly vortex the tube and then do a quick spin (less than 5000xg) to concentrate the liquid at the bottom.</li><li>5. Store the suspended plasmid at -20°C. The DNA is stable for at least one year from date of shipping when stored at -20°C.</li></ol>
<b>RefSeq:</b>	<a href="#">NM_016866.1</a> , <a href="#">NM_016866.2</a> , <a href="#">NP_058562.1</a>
<b>RefSeq Size:</b>	3268 bp
<b>RefSeq ORF:</b>	1671 bp
<b>Locus ID:</b>	53416
<b>UniProt ID:</b>	<a href="#">Q9Z1W9</a>
<b>Cytogenetics:</b>	2 C1.3
<b>MW:</b>	60.8 kDa
<b>Gene Summary:</b>	May act as a mediator of stress-activated signals. Mediates the inhibition of SLC4A4, SLC26A6 as well as CFTR activities by the WNK scaffolds, probably through phosphorylation (PubMed:21317537, PubMed:23542070). Phosphorylates RELT (PubMed:16530727). [UniProtKB/Swiss-Prot Function]