

Product datasheet for MR208726L3

Sh2b3 (NM_008507) Mouse Tagged Lenti ORF Clone

Product data:

Product Type:	Expression Plasmids
Product Name:	Sh2b3 (NM_008507) Mouse Tagged Lenti ORF Clone
Tag:	Myc-DDK
Symbol:	Sh2b3
Synonyms:	AI429800; L; Lnk
Mammalian Cell Selection:	Puromycin
Vector:	pLenti-C-Myc-DDK-P2A-Puro (PS100092)
E. coli Selection:	Chloramphenicol (34 ug/mL)
ORF Nucleotide Sequence:	The ORF insert of this clone is exactly the same as(MR208726).
Restriction Sites:	SgfI-MluI
Cloning Scheme:	

Cloning sites used for ORF Shuttling:



* The last codon before the Stop codon of the ORF.

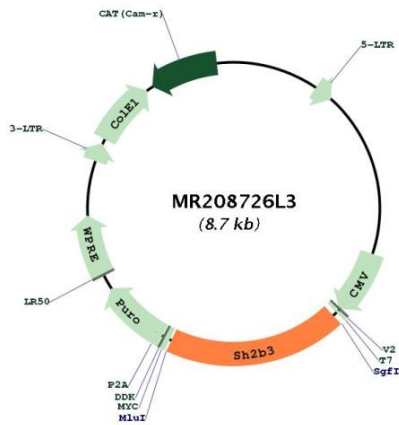
ACCN:	NM_008507
ORF Size:	1644 bp



[View online »](#)

OTI Disclaimer:	The molecular sequence of this clone aligns with the gene accession number as a point of reference only. However, individual transcript sequences of the same gene can differ through naturally occurring variations (e.g. polymorphisms), each with its own valid existence. This clone is substantially in agreement with the reference, but a complete review of all prevailing variants is recommended prior to use. More info
OTI Annotation:	This clone was engineered to express the complete ORF with an expression tag. Expression varies depending on the nature of the gene.
Components:	The ORF clone is ion-exchange column purified and shipped in a 2D barcoded Matrix tube containing 10ug of transfection-ready, dried plasmid DNA (reconstitute with 100 ul of water).
Reconstitution Method:	<ol style="list-style-type: none"> 1. Centrifuge at 5,000xg for 5min. 2. Carefully open the tube and add 100ul of sterile water to dissolve the DNA. 3. Close the tube and incubate for 10 minutes at room temperature. 4. Briefly vortex the tube and then do a quick spin (less than 5000xg) to concentrate the liquid at the bottom. 5. Store the suspended plasmid at -20°C. The DNA is stable for at least one year from date of shipping when stored at -20°C.
RefSeq:	NM_008507.3
RefSeq Size:	2498 bp
RefSeq ORF:	1647 bp
Locus ID:	16923
UniProt ID:	O09039
Cytogenetics:	5 61.99 cM
Gene Summary:	This gene encodes a member of the SH2B family of adapter proteins that play an important role in T cell receptor signaling. This gene is preferentially expressed in hematopoietic stem cells, hematopoietic progenitors, pre and immature B cells, as well as megakaryocytes and mastocytes. In hematopoietic stem cells, the encoded protein is a key regulator of self-renewal, proliferation and apoptosis. Mice lacking the encoded protein exhibit pre and immature B cell expansion in spleen and the bone marrow. Alternative splicing results in multiple transcript variants encoding different isoforms. [provided by RefSeq, Apr 2015]

Product images:



Circular map for MR208726L3