

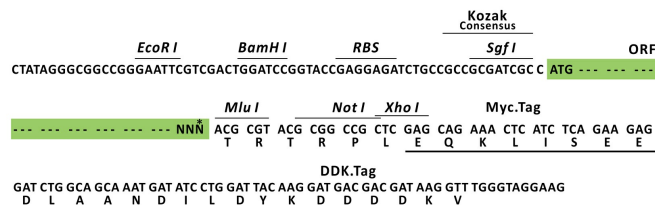
Product datasheet for MR208704L3

Lenti ORF clone of MGC:6384 (Myc-DDK-tagged) - Mouse cDNA clone MGC:6384 IMAGE:3501390 (Dbr1) (BC006661) Mouse Tagged Lenti ORF Clone

Product data:

Product Type:	Expression Plasmids
Product Name:	Lenti ORF clone of MGC:6384 (Myc-DDK-tagged) - Mouse cDNA clone MGC:6384 IMAGE:3501390 (Dbr1) (BC006661) Mouse Tagged Lenti ORF Clone
Tag:	Myc-DDK
Symbol:	Dbr1
Synonyms:	AW018415
Mammalian Cell Selection:	Puromycin
Vector:	pLenti-C-Myc-DDK-P2A-Puro (PS100092)
E. coli Selection:	Chloramphenicol (34 ug/mL)
ORF Nucleotide Sequence:	The ORF insert of this clone is exactly the same as(MR208704).
Restriction Sites:	SgfI-MluI
Cloning Scheme:	

Cloning sites used for ORF Shuttling:



* The last codon before the Stop codon of the ORF.

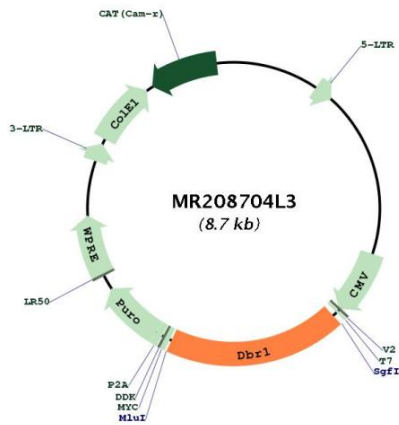
ACCN: BC006661



[View online »](#)

ORF Size:	1641 bp
OTI Disclaimer:	The molecular sequence of this clone aligns with the gene accession number as a point of reference only. However, individual transcript sequences of the same gene can differ through naturally occurring variations (e.g. polymorphisms), each with its own valid existence. This clone is substantially in agreement with the reference, but a complete review of all prevailing variants is recommended prior to use. More info
OTI Annotation:	This clone was engineered to express the complete ORF with an expression tag. Expression varies depending on the nature of the gene.
Components:	The ORF clone is ion-exchange column purified and shipped in a 2D barcoded Matrix tube containing 10ug of transfection-ready, dried plasmid DNA (reconstitute with 100 ul of water).
Reconstitution Method:	<ol style="list-style-type: none"> 1. Centrifuge at 5,000xg for 5min. 2. Carefully open the tube and add 100ul of sterile water to dissolve the DNA. 3. Close the tube and incubate for 10 minutes at room temperature. 4. Briefly vortex the tube and then do a quick spin (less than 5000xg) to concentrate the liquid at the bottom. 5. Store the suspended plasmid at -20°C. The DNA is stable for at least one year from date of shipping when stored at -20°C.
RefSeq:	BC006661 , AAH06661
RefSeq Size:	2221 bp
RefSeq ORF:	1643 bp
Locus ID:	83703
Cytogenetics:	9 E3.3
Gene Summary:	Cleaves the 2'-5' phosphodiester linkage at the branch point of lariat intron pre-mRNAs after splicing and converts them into linear molecules that are subsequently degraded. It thereby facilitates ribonucleotide turnover. It may also participate in retrovirus replication via an RNA lariat intermediate in cDNA synthesis (By similarity).[UniProtKB/Swiss-Prot Function]

Product images:



Circular map for MR208704L3