

## Product datasheet for **MR208701**

### **Zbtb48 (BC005515) Mouse Tagged ORF Clone**

#### **Product data:**

Product Type:	Expression Plasmids
Product Name:	Zbtb48 (BC005515) Mouse Tagged ORF Clone
Tag:	Myc-DDK
Symbol:	Zbtb48
Synonyms:	0610011D15Rik; AI327031; Hkr3
Mammalian Cell Selection:	Neomycin
Vector:	pCMV6-Entry (PS100001)
E. coli Selection:	Kanamycin (25 ug/mL)



[View online »](#)

**ORF Nucleotide Sequence:**

>MR208701 ORF sequence  
 Red=Cloning site Blue=ORF Green=Tags(s)

TTTTGTAATACGACTCACTATAGGGCGGCCGGAATTCGTCGACTGGATCCGGTACCGAGGAGATCTGCC  
 GCC**CGGATCGCC**

ATGGACGGTTCCTTCGTGCAGCACAGCGTGAGGGTTCGAGAACTCAACAAGCAGCGGAGAAGGGCC  
 AGTATTGCGACGCCACGCTGGACGTGGGGGCCTGGTGTCAAGGCGCACTGGAGTGCCTGGCGTGTG  
 CAGCCATTTCTCCAGAGAATCTACGGTATGGCACAGGGGGCAGCGTTGTCTCCACGGGCTTTGCT  
 GAGATTTTGGCCTCCTGCTGGACTTTTTCTACACCGGCCACCTCGCCCTCACCTCAGGGAACAGGGATC  
 AGGTACTCTTGGCAGCCAAAGAGTTGCGGGTGCCTGAGGCTGTGGAGCTATGTCAGAGCTCCAGCCCCA  
 AACCTCAGTGGGACAGGCACAGAGTGGACTGGTCAACCTGCCTCCAGGACGTGAAAAGCCACCTGAAG  
 GAGCCGACAGACTTGGATGAGGAGGAAGTTTTCAAGACTCTGAGCCTGGCCTCCGTGGATCAGGAGCCCA  
 GAGACTGAGCAGCCCCAGCTGGGTACACCTGCTCAGAGCAGCAGCGCCTTCTCTGTGGAAACTCAC  
 GCAGGCTTTGAAGCCTTCTCCTTCAGAGGACAAAGAGTCTGAGGACTGCAAAGAGCCCCAAGGCCCTTC  
 GAGGCTGGAGGTGCCCGCTGCAGGGCGAGAGCAATGAGTGGGAAGTGGTGGTCCAAAGTGGAGGACGACA  
 GGGACGGTGATTACGTATCTGAGCCTGAGACTGTGCTGACCAGAAGGAAGTCAAAAGTGATTAGAAAACC  
 CTGTGCAGCCGAGCCAGCCCTGGGTGCGGGTCTCTCACAGCCGAGCCACTGACAGCAGAAAAGGTGCA  
 GCCGTTCCGGTCGAATGTCCACATGTCACAAAAGTTCTCAGCAAATATTACCTGAAAGTCCACAACA  
 GGAAACACACTGGGGAGAAAACCTTCGAGTGTCCCAAATGTGGGAAGTGTACTTCCGCAAGGAGAATCT  
 CTTGGAACATGAAGCCAGGAATTGCATGAACCGCTCAGAACAGGTCTTACATGCTCCGTATGCCAGGAG  
 ACCTTCGACGGAGGATGGAGCTGCGCTGCACATGGTGTCTCACACAGGGGAGATGCCCTACAAGTGT  
 CCTCTGCTCACAGCAGTTCATGCAGAAGAAAGACTTGCAGAGCCACATGATCAAGCTGCAGGGAGCCCC  
 TAAACCCACGCAGTAAGTGCCAGTCAGGGCTGGGGTCCGGTGGCTCTGGGACAGCTCAATCCTGTCTCT  
 CACCTGGATGTGCTCCCTCTGCCTGTCTCACCCACCTGCAGTGCCCCACTTGTGCCAAGTCTTCTGTCT  
 TAGGACGGAGCTACAGCTGCACGAGGCTTTAAGCATCGTGGAGAAAAGCTCTTTGTGTGTGAGGAATGC  
 GGGCACCGGGCTCGAGCCGCAACGGGCTGCAGATGCACATCAAGGCCAAGCACAGGAATGAAAGGCCTT  
 ATGTCTGTGAGTTCTGCAGCCATGCCTTACCCAGAAGGCCAACCTCAACATGCACCTGCGCACGCACAC  
 CGGCGAGAAGCCTTCCAGTGCCACCTCTGTGGGAAGACCTTCCGCACCCAAGTTTGACAAGCACAAACC  
 GCACCCACACGGGCGAGAGGCCTTTCAGCTG

**ACGCGT**ACGCGGCCGCTCGAGCAGAAACTCATCTCAGAAGAGGATCTGGCAGCAAATGATATCCTGGATT  
 ACAAGGATGACGACGATAAGGTTTAA

**Protein Sequence:**

>MR208701 protein sequence  
 Red=Cloning site Green=Tags(s)

MDGSFVQHHSVRVLQELNKQREKQYCDATLDVGGLVFKAHWSVLACCSHFFQRIYDGTGGSVVLPAGFA  
 EIFGLLLDDFFYTGHLLTSGNRDQVLLAAKELRVPEAVELCQSFQPQTSVGQAQSGLGQPASQDVKSHLK  
 EPTDLDEEEVFKTSLASVDQEPDTEQPQLGTPAQSSAFLCGKLTQALKPSPSEDKESEDCKEPPRPF  
 EAGGAPLQGESNEWEVVVQVEDDRDGDYVSEPETVLTTRRKSIVIRKPCAAEPALGAGSLTAEPTDSRKG  
 AVPVECPCHKKFLSKYYLKVHNRKHTGEKPFCEPKCGKCYFRKENLLEHEARNCMNRSEQVFTCSVCQE  
 TFRRRMELRLHMSHTGEMPYKSCSSQFMQKDLQSHMIKLGAPKPHAVSASQGWGSGSGTAQSCP  
 HLDVLPVSPVCSAPLVPSASCLGRSYSTRLLSIVEKSSLCVRNAGTPPRAATGCRCTSRPSTGMKGL  
 MSYSSAAMPSPRRPTSTCTCARTPARSLSSATSVGRPSAPKFGQAQPHPHGREAFQL

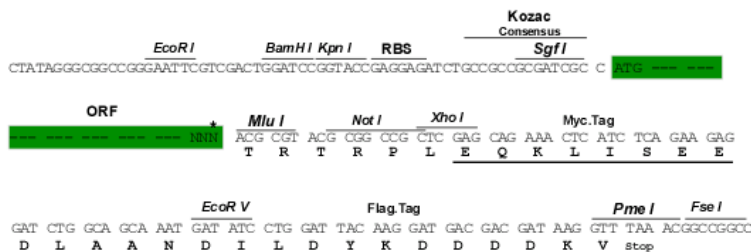
**TR**TRPLEQKLISEEDLAANDILDYKDDDDKV

**Restriction Sites:**

Sgfl-MluI

**Cloning Scheme:**

Cloning sites used for ORF Shutting:



\* The last codon before the Stop codon of the ORF

**ACCN:** BC005515

**ORF Size:** 1641 bp

**OTI Disclaimer:** The molecular sequence of this clone aligns with the gene accession number as a point of reference only. However, individual transcript sequences of the same gene can differ through naturally occurring variations (e.g. polymorphisms), each with its own valid existence. This clone is substantially in agreement with the reference, but a complete review of all prevailing variants is recommended prior to use. [More info](#)

**OTI Annotation:** This clone was engineered to express the complete ORF with an expression tag. Expression varies depending on the nature of the gene.

**Components:** The ORF clone is ion-exchange column purified and shipped in a 2D barcoded Matrix tube containing 10ug of transfection-ready, dried plasmid DNA (reconstitute with 100 ul of water).

**Reconstitution Method:**

1. Centrifuge at 5,000xg for 5min.
2. Carefully open the tube and add 100ul of sterile water to dissolve the DNA.
3. Close the tube and incubate for 10 minutes at room temperature.
4. Briefly vortex the tube and then do a quick spin (less than 5000xg) to concentrate the liquid at the bottom.
5. Store the suspended plasmid at -20°C. The DNA is stable for at least one year from date of shipping when stored at -20°C.

**RefSeq:** [BC005515](#), [AAH05515](#)
**RefSeq Size:** 2394 bp

**RefSeq ORF:** 1643 bp

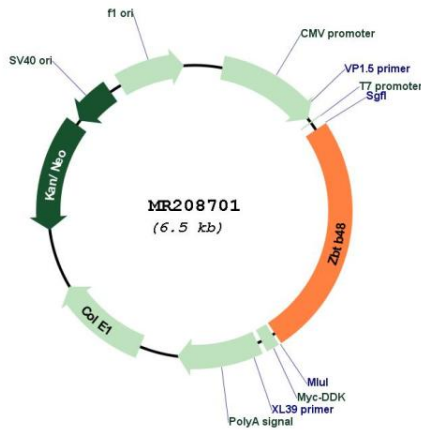
**Locus ID:** 100090

**Cytogenetics:** 4 E2

**MW:** 59.4 kDa

**Gene Summary:** Telomere-binding protein that acts as a regulator of telomere length. Directly binds the telomeric double-stranded 5'-TTAGGG-3' repeat. Preferentially binds to telomeres that have a low concentration of shelterin complex and acts as a regulator of telomere length by initiating telomere trimming, a process that prevents the accumulation of aberrantly long telomeres. Also acts as a transcription regulator that binds to promoter regions. Regulates expression of a small subset of genes, including MTFP1. Regulates expression the J and/or S elements in MHC II promoter. Acts as a negative regulator of cell proliferation by specifically activating expression of ARF, a tumor suppressor isoform of CDKN2A.[UniProtKB/Swiss-Prot Function]

**Product images:**



Circular map for MR208701