

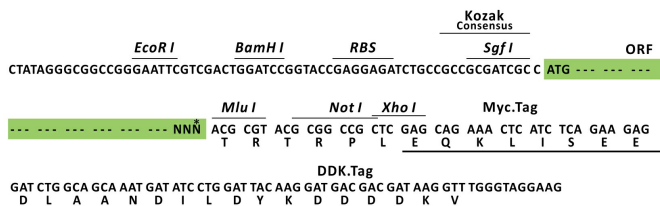
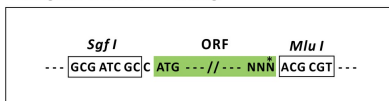
## Product datasheet for MR208685L3

### Leprel2 (BC003726) Mouse Tagged Lenti ORF Clone

#### Product data:

|                           |  |
|---------------------------|--|
| Product Type:             | Expression Plasmids  |
| Product Name:             | Leprel2 (BC003726) Mouse Tagged Lenti ORF Clone                |
| Tag:                      | Myc-DDK  |
| Symbol:                   | Leprel2  |
| Synonyms:                 | BC016431; Grcb; Leprel2  |
| Mammalian Cell Selection: | Puromycin  |
| Vector:                   | pLenti-C-Myc-DDK-P2A-Puro (PS100092)                           |
| E. coli Selection:        | Chloramphenicol (34 ug/mL)                                     |
| ORF Nucleotide Sequence:  | The ORF insert of this clone is exactly the same as(MR208685). |
| Restriction Sites:        | SgfI-MluI  |
| Cloning Scheme:           |  |

Cloning sites used for ORF Shuttling:



\* The last codon before the Stop codon of the ORF.

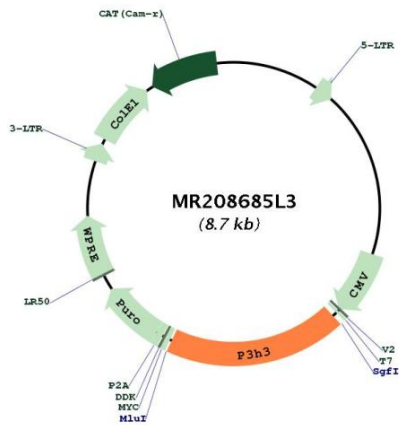
|           |          |
|-----------|----------|
| ACCN:     | BC003726 |
| ORF Size: | 1635 bp  |



[View online »](#)

|                               |  |
|-------------------------------|--|
| <b>OTI Disclaimer:</b>        | The molecular sequence of this clone aligns with the gene accession number as a point of reference only. However, individual transcript sequences of the same gene can differ through naturally occurring variations (e.g. polymorphisms), each with its own valid existence. This clone is substantially in agreement with the reference, but a complete review of all prevailing variants is recommended prior to use. <a href="#">More info</a>   |
| <b>OTI Annotation:</b>        | This clone was engineered to express the complete ORF with an expression tag. Expression varies depending on the nature of the gene.   |
| <b>Components:</b>            | The ORF clone is ion-exchange column purified and shipped in a 2D barcoded Matrix tube containing 10ug of transfection-ready, dried plasmid DNA (reconstitute with 100 ul of water).   |
| <b>Reconstitution Method:</b> | <ol style="list-style-type: none"><li>1. Centrifuge at 5,000xg for 5min.</li><li>2. Carefully open the tube and add 100ul of sterile water to dissolve the DNA.</li><li>3. Close the tube and incubate for 10 minutes at room temperature.</li><li>4. Briefly vortex the tube and then do a quick spin (less than 5000xg) to concentrate the liquid at the bottom.</li><li>5. Store the suspended plasmid at -20°C. The DNA is stable for at least one year from date of shipping when stored at -20°C.</li></ol>  |
| <b>RefSeq:</b>                | <a href="#">BC003726</a> , <a href="#">AAH03726</a>  |
| <b>RefSeq Size:</b>           | 2289 bp  |
| <b>RefSeq ORF:</b>            | 1637 bp  |
| <b>Locus ID:</b>              | 14789  |
| <b>Cytogenetics:</b>          | 6 59.17 cM   |
| <b>Gene Summary:</b>          | Part of a complex composed of PLOD1, P3H3 and P3H4 that catalyzes hydroxylation of lysine residues in collagen alpha chains and is required for normal assembly and cross-linking of collagen fibrils (PubMed:27119146). Required for normal hydroxylation of lysine residues in type I collagen chains in skin, bone, tendon, aorta and cornea (PubMed:28115524). Required for normal skin stability via its role in hydroxylation of lysine residues in collagen alpha chains and in collagen fibril assembly (PubMed:27119146, PubMed:28115524). Apparently not required for normal prolyl 3-hydroxylation on collagen chains, possibly because it functions redundantly with other prolyl 3-hydroxylases (PubMed:28115524).[UniProtKB/Swiss-Prot Function] |

Product images:



Circular map for MR208685L3