

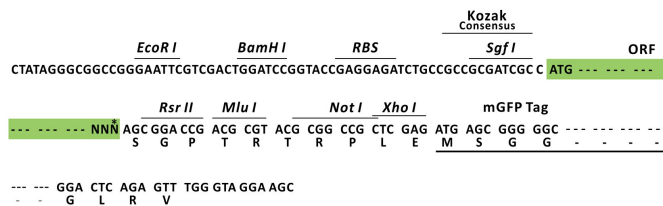
## Product datasheet for MR208643L4

### Treh (BC019214) Mouse Tagged Lenti ORF Clone

#### Product data:

Product Type:	Expression Plasmids
Product Name:	Treh (BC019214) Mouse Tagged Lenti ORF Clone
Tag:	mGFP
Symbol:	Treh
Synonyms:	2210412M19Rik
Mammalian Cell Selection:	Puromycin
Vector:	pLenti-C-mGFP-P2A-Puro (PS100093)
E. coli Selection:	Chloramphenicol (34 ug/mL)
ORF Nucleotide Sequence:	The ORF insert of this clone is exactly the same as(MR208643).
Restriction Sites:	SgfI-RsrII
Cloning Scheme:	

Cloning sites used for ORF Shuttling:



\* The last codon before the Stop codon of the ORF.

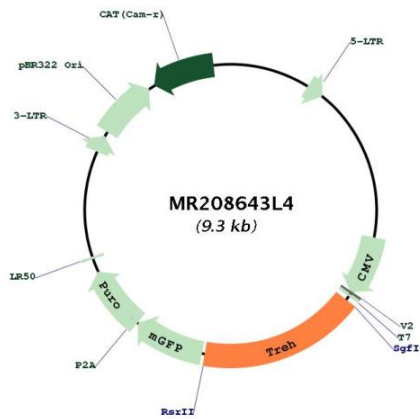
ACCN:	BC019214
ORF Size:	1623 bp



[View online »](#)

<b>OTI Disclaimer:</b>	The molecular sequence of this clone aligns with the gene accession number as a point of reference only. However, individual transcript sequences of the same gene can differ through naturally occurring variations (e.g. polymorphisms), each with its own valid existence. This clone is substantially in agreement with the reference, but a complete review of all prevailing variants is recommended prior to use. <a href="#">More info</a>
<b>OTI Annotation:</b>	This clone was engineered to express the complete ORF with an expression tag. Expression varies depending on the nature of the gene.
<b>Components:</b>	The ORF clone is ion-exchange column purified and shipped in a 2D barcoded Matrix tube containing 10ug of transfection-ready, dried plasmid DNA (reconstitute with 100 ul of water).
<b>Reconstitution Method:</b>	<ol style="list-style-type: none"><li>1. Centrifuge at 5,000xg for 5min.</li><li>2. Carefully open the tube and add 100ul of sterile water to dissolve the DNA.</li><li>3. Close the tube and incubate for 10 minutes at room temperature.</li><li>4. Briefly vortex the tube and then do a quick spin (less than 5000xg) to concentrate the liquid at the bottom.</li><li>5. Store the suspended plasmid at -20°C. The DNA is stable for at least one year from date of shipping when stored at -20°C.</li></ol>
<b>RefSeq:</b>	<a href="#">BC019214.1</a>
<b>RefSeq Size:</b>	1972 bp
<b>RefSeq ORF:</b>	1625 bp
<b>Locus ID:</b>	58866
<b>Cytogenetics:</b>	9 A5.2
<b>Gene Summary:</b>	This gene belongs to the alpha-glucosidase family, whose members encode enzymes that carry out hydrolysis of alpha-glucoside bonds of a variety of carbohydrates. The enzyme encoded by this gene uses the disaccharide trehalose as a highly specific substrate and converts it into two glucose molecules. Alternative splicing of this gene results in multiple transcript variants encoding different isoforms. [provided by RefSeq, Apr 2013]

Product images:



Circular map for MR208643L4