

Product datasheet for **MR208285**

Usp11 (NM_001013378) Mouse Tagged ORF Clone

Product data:

Product Type:	Expression Plasmids
Product Name:	Usp11 (NM_001013378) Mouse Tagged ORF Clone
Tag:	Myc-DDK
Symbol:	Usp11
Synonyms:	E430026A01Rik
Vector:	pCMV6-Entry (PS100001)
E. coli Selection:	Kanamycin (25 ug/mL)
Cell Selection:	Neomycin



[View online »](#)

ORF Nucleotide Sequence:

>MR208285 representing NM_001013378
 Red=Cloning site Blue=ORF Green=Tags(s)

TTTTGTAATACGACTCACTATAGGGCGGCCGGAATTCGTCGACTGGATCCGGTACCGAGGAGATCTGCC
 GCC**CGCATCGCC**

ATGACGGATGATTCTCTGAAGATTGAAATGGTTTGGCACTGGTTGGACCAGGGACTGATGTAGGGATAT
 CTTCACTCCCATGCTGGGGTACTTGGGAAAAAATTATGCTTCAGCTAAAGTCACAACAGACGGCATTG
 CCCTGCTGTAGAGCGAAAGCAAGCTAAGTGCCTTAAAACCTTACCGCATTAGCTTCCAAGAATCTGTC
 TTTCTGTGTGAGGATCTTCAGTGCATTTATCCTTTGGGCTCTGAGTCACTTACTAATTTAATTTCTCCTG
 ATTCAGAAGATTGCCCCTCAAGTAAGCCTCAAAAACGAAAAAGATTGGAAACCAACTGTAGGAATTC
 ACCTCTTCCAGTACATTCAAAAAGACTAGAAGTCACATTGTCAGTATAGTGAACCAATTGTGAATGGT
 AAATAAATGGAGAAGTGTGTGATGACTTCTCAGCAAGCTTCCAGATACCAGTGTCCAGGATCCTG
 CCAGCACAGCTGCTTCTGTGGAGCAGAGTGGGCTTTGGAGGCTGATGATGTGGTTGTGGCCGCTACAGA
 AGATCCTGCTACAGTTAGTGTACATCTGAGCTGGAAATGCCAGCTAAGAGCAGATGTTTACCACCTTGC
 CAGACTCTGTGTGCCAGTGGAAAAACCCAGGCCCTGTGCTGGTTAGACTGTATCCTGTCCAGCCCTGG
 TGCACTTGGAGGTGTTGAGGAAGACTGTGCTGGAGGCGTCTCCAGGGAGGAGTGTGATTTTGAAGGCT
 GTTTGAAATGTACCACCAAGCAGATGAGCTGCTGCACACCATCACCTGCATGGCGTCACAGGTGAAGAT
 TGTAATAAATGACATCAGAAATATTTACAGAAATAGATACCTGTTTGAATAAAGTTAGAGATGAAATTT
 TTGCTAAACTTCAACCGAAGCTTAGATGCACATTAGGTGACATGGAAAGTCTGTGTTTGCACCTTCTGT
 ACTGTTAAAGCTTGAACCCCATGTTGAAAGCCTTTTACATATCTTTTTCTTGGAAATTTGAATGTTCC
 CATTGTGGACACCAGTACCAAAAACAGGTGTGTGAAGAGTCTGGTACCTTACCAATATTGTTCTGTGAGT
 GGCATCCACTCAATGCTGCCATTTTGGTCCATGTAACAGCTGCAACAGTAAATCAGAAATGAAAAAT
 GGTGTTGGAAAGAGCGTGCCCATACTCATGCTGCACTTCGTGGAGGGCTTACCAAGGAGGATTGCAA
 CACTATGCCTTCCACTTTGAAGGAAGCCTTTATCAAGTACGTCGGTAATACAGTACCAAGCAAATAACC
 ATTTTATAACATGGTTTTTAGATGCTGATGGGAGTTGGCTGGAGTGTGATGACCTAAAGGCTCCCTGTGC
 TAAAAGGCACGTGACCTGTGAAGTGCAGCTTCCAGAGACACATATCGTTATTTGGGAAAGAAAAATCCAG
 GTGCCAATTGAAGAAGCTGCCTGCCTTCCATGCATGAAGCAAATGTGCAGCCTGTATCAGGAATTGAAG
 TCCCTGGCAAC

ACGCGTACGCGGCCGCTCGAGCAGAAACTCATCTCAGAAGAGGATCTGGCAGCAAATGATATCCTGGATT
 ACAAGGATGACGACGATAAGGTTTAA

Protein Sequence:

>MR208285 representing NM_001013378
 Red=Cloning site Green=Tags(s)

MTDDSLKIGNLPLVPGTVDVGISSLPMLGYLGKNYASAKVTTDGHCPACRAKGKLSALKPYRISFQESV
 FLCEDLQCIYPLGSESLTNLISPDSEDCPTPSKPQKRKRLTNCRNSPLPVHKKTRSHIVTDSEPIVNG
 KYNGEVCDDFSASFDPDTPASTAASVEQSEALEADDVVVAATEDPATVSVTSELEMPAKSRCLPLC
 QTL CVQWKNTQALCWLDCILSALVHLEVLKRVLEACSRREECVFGRLFEMYHQADELLHTHHLHGVTGED
 CKKLTSEIFTEIDTCLNKVRDEIFAKLQPKLRCTLDGMEFPVFPVLLKLEPHVESLFTYSFSWNFECS
 HCGHQYQNRVKSIVFTTNI VPEWHPLNAAHFGPCNSCNSKSQIRKMLERASPI.LMLHFVEGLPRRDQ
 HYAFHFEGSLYQVTSVIQYQANNHFITWFLDADGWSWLECDLKGPCAKRHVTCEVPASETHIVIWERKSQ
 VPIEEAACLPCKPNVQPVSGIEVPGN

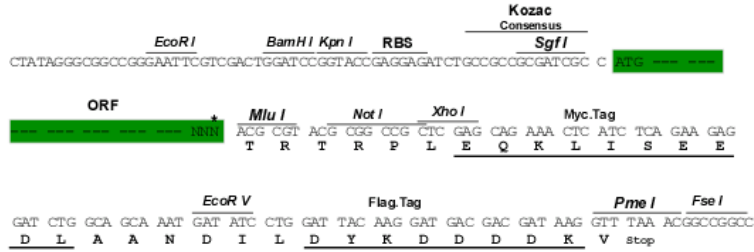
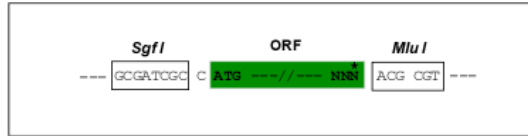
TRTRPLEQKLISEEDLAANDILDYKDDDDKV

Restriction Sites:

Sgfl-MluI

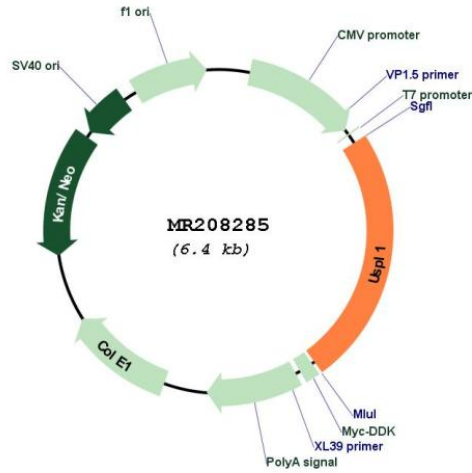
Cloning Scheme:

Cloning sites used for ORF Shuttling:



* The last codon before the Stop codon of the ORF

Plasmid Map:



ACCN:	NM_001013378
ORF Size:	1551 bp
OTI Disclaimer:	The molecular sequence of this clone aligns with the gene accession number as a point of reference only. However, individual transcript sequences of the same gene can differ through naturally occurring variations (e.g. polymorphisms), each with its own valid existence. This clone is substantially in agreement with the reference, but a complete review of all prevailing variants is recommended prior to use. More info
OTI Annotation:	This clone was engineered to express the complete ORF with an expression tag. Expression varies depending on the nature of the gene.
Components:	The ORF clone is ion-exchange column purified and shipped in a 2D barcoded Matrix tube containing 10ug of transfection-ready, dried plasmid DNA (reconstitute with 100 ul of water).
Reconstitution Method:	<ol style="list-style-type: none">1. Centrifuge at 5,000xg for 5min.2. Carefully open the tube and add 100ul of sterile water to dissolve the DNA.3. Close the tube and incubate for 10 minutes at room temperature.4. Briefly vortex the tube and then do a quick spin (less than 5000xg) to concentrate the liquid at the bottom.5. Store the suspended plasmid at -20°C. The DNA is stable for at least one year from date of shipping when stored at -20°C.
RefSeq:	NM_001013378.2 , NP_001013396.2
RefSeq Size:	3272 bp
RefSeq ORF:	1554 bp
Locus ID:	231915
UniProt ID:	Q3ULM6
Cytogenetics:	5 G3
MW:	58 kDa
Gene Summary:	SUMO-specific isopeptidase involved in protein desumoylation. Specifically binds SUMO proteins with a higher affinity for SUMO2 and SUMO3 which it cleaves more efficiently. Also able to process full-length SUMO proteins to their mature forms (By similarity). Plays a key role in RNA polymerase-II-mediated snRNA transcription in the Cajal bodies (By similarity). Is a component of complexes that can bind to U snRNA genes (By similarity).[UniProtKB/Swiss-Prot Function]