

Product datasheet for **MR208257**

Cdc25a (NM_007658) Mouse Tagged ORF Clone

Product data:

Product Type:	Expression Plasmids
Product Name:	Cdc25a (NM_007658) Mouse Tagged ORF Clone
Tag:	Myc-DDK
Symbol:	Cdc25a
Synonyms:	D9Ertd393e
Vector:	pCMV6-Entry (PS100001)
E. coli Selection:	Kanamycin (25 ug/mL)
Cell Selection:	Neomycin



[View online »](#)

ORF Nucleotide Sequence:

>MR208257 ORF sequence
 Red=Cloning site Blue=ORF Green=Tags(s)

TTTTGTAATACGACTCACTATAGGGCGGCCGGGAATTCGTCGACTGGATCCGGTACCGAGGAGATCTGCC
 GCC**CGCATCGCC**

ATGGAACTGGGCCGGAGCCCCACCGCCGCCCTGTTCTTCGCTTGCAGCCCCACGCCTGCGCCG
 AGCCACGGGAAGATGCTGTTGGCGCGTCAGCTGCTGGCGGACTGTCCCTGTACCAACCTGACGGT
 CACCATGGACCAGCTGGAAGGACTGGGCAGTGACTGTGAGAAAATGGAAGTGAGAAATAACAGCAGTCTA
 CAGAGAATGGGCTCCTCAGAATCGACCGATTAGGTTTCTGTCTAGATTCTCTGGGCCCTTGGACAGTA
 AAGAAAACCTTGAAATTTCCCTGACGAGAATAAATCCCTACCTCAGAAGCTCTGGGATGTAGCCAGC
 CCTGAAGAGGAGCCACTCTGATTCTCTAGACCACGACACCTTTCACCTCATCGACCAGGATGAAAATAAA
 GAAAATGAAGCATTGAAATTTAAAAAGCCAATACGACCTGCATCTCGTCACATCTACGAGGAGAGTAAAG
 ATCCCTTACACACAGGCAGAATTCAGCCCCAGCTCGGATGCTATCTTCAAATGAAAGTGAATCAGGAAA
 TTTAGTCTCTTTTTATACCCAGTCACTGTAAAAGCCACTTGTCCGATGAGGATGATGGCTTCATA
 GACCTTCTGGATGGCGAGAATATGAAGAATGATGAGGAGACCCCATCATGCATGGCAAGCCTCTGGACAG
 CTCCCCTTGTCATGAGGAGACCTGCAAACCTTGCCGATCGTTGCGGGCTGTTGACTCCCCTTCCCCTG
 CGGCTCCAGCACTCGGGCGGTGTTGAAGAGAGCAGACCGGTCTCACGAGGAGCCTCTCGGGGTACAAA
 AGGAGGAAGAGTGTGCCAGCCCTGTGAAGGCGAAGGCGGATGTTCCGGAGCCCGCCAGCTTCCATCCC
 AGTCTCTATCCCTGATGTCTTCCCCAAAGGAACATTGAGAACATTTGGACAGTGACCAAGAGACCT
 TATAGGAGATTTCTCAAAGGTTATCTCTTTAATACAGTCTCTGGGAAGCATCAGGATTTGAAATATATT
 TCTCCAGAAATATGGCATCTGTTTTGAATGGCAAGTTGCCAGTCTCATTAAAGAGTTTGTATCATTG
 ACTGCCGATACCCATATGAGTATGAAGGAGGTCACATCAAGGGTCCGTGAATCTGCACATGGAAGAGA
 GGTTGAAGACTTCTTACTTAAGAACCCTATTGTGCCTACTGATGGCAAGGCTGTCATTGTCGTGTTCCAC
 TGTGAGTTTTCTCTGAAAGAGGCCCTCGAATGTGCCGATATGTGAGAGAGAGAGATAGGCTCGGCAATG
 AGTACCCCAAGCTCCACTACCCTGAGCTGTATGTCTGAAAGGGGGATACAAGGAGTTCTTTTTGAAAGT
 CCAGTCTCACTGTGAACCCCGAGCTACCGCCAAATGCACCATGAAGACTTTAAAGAAGACCTAAAGAAG
 TTCCGCACCAAGAGCCGGACCTGGGCAGGAGAAAAGAGCAAAAGAGAGATGTACAGTCGCTGAAGAAGC
 TC

ACGCGTACGCGGCCGCTCGAGCAGAAACTCATCTCAGAAGAGGATCTGGCAGCAAATGATATCTGGATT
 ACAAGGATGACGACGATAAGGTTTAA

Protein Sequence:

>MR208257 protein sequence
 Red=Cloning site Green=Tags(s)

MELGPEPPHRRRLFFACSPTPAPQPTGKMLFGASAAGGLSPVTNLTVTMDQLEGLGSDCEKMEVRNSSL
 QRMGSSESTDSGFCLDSPGLDSKENLEISLTRINSLPQKLLGCSPALKRSHSDSLDHTDFHLIDQDENK
 ENEAFEFKKPIRPASRHIYEESKDPFTHRQNSAPARMLSSNESESGNFSPLFIPQSPVKATLSDEDDGFI
 DLLLDGENMKNDEETPSCMASLWTAPLVMRRPANLADRCGLFDSPSPCGSSTRAVLKRADRSHEEPPRGTK
 RRSVPSVPKAKADVPEPAQLPSQSLMSLSPKGTIENILDSRDLIGDFSKGYLFNTVSGKHQDLKYI
 SPEIMASVLNGKFASLIKEFVIIDCRYPYEEYEGGHKGAVNLHMEEVEFDLLKNPVPDGRKRVIVVFH
 CEFSSERGPRMCRYVRERDRLGNEYPKLHYPELVYLVKGGYKEFFLKQSHCEPPSYRPMHHEDFKEDLKK
 FRTKSRTWAGEKSKREMYSRLKKL

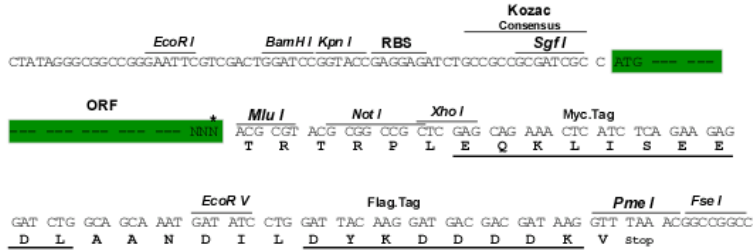
TRTRPLEQKLISEEDLAANDILDYKDDDDKV

Restriction Sites:

Sgfl-MluI

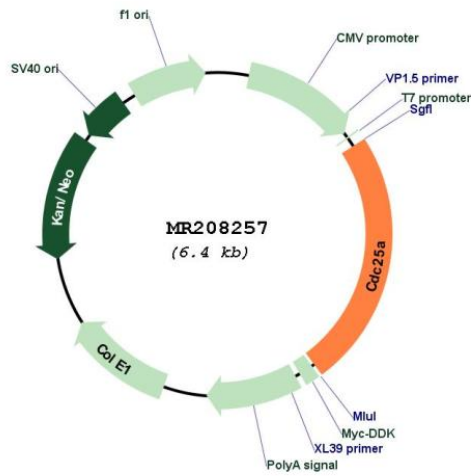
Cloning Scheme:

Cloning sites used for ORF Shuttling:



* The last codon before the Stop codon of the ORF

Plasmid Map:



ACCN:	NM_007658
ORF Size:	1545 bp
OTI Disclaimer:	The molecular sequence of this clone aligns with the gene accession number as a point of reference only. However, individual transcript sequences of the same gene can differ through naturally occurring variations (e.g. polymorphisms), each with its own valid existence. This clone is substantially in agreement with the reference, but a complete review of all prevailing variants is recommended prior to use. More info
OTI Annotation:	This clone was engineered to express the complete ORF with an expression tag. Expression varies depending on the nature of the gene.
Components:	The ORF clone is ion-exchange column purified and shipped in a 2D barcoded Matrix tube containing 10ug of transfection-ready, dried plasmid DNA (reconstitute with 100 ul of water).
Reconstitution Method:	<ol style="list-style-type: none">1. Centrifuge at 5,000xg for 5min.2. Carefully open the tube and add 100ul of sterile water to dissolve the DNA.3. Close the tube and incubate for 10 minutes at room temperature.4. Briefly vortex the tube and then do a quick spin (less than 5000xg) to concentrate the liquid at the bottom.5. Store the suspended plasmid at -20°C. The DNA is stable for at least one year from date of shipping when stored at -20°C.
RefSeq:	NM_007658.2
RefSeq Size:	3643 bp
RefSeq ORF:	1545 bp
Locus ID:	12530
UniProt ID:	P48964
Cytogenetics:	9 59.81 cM
MW:	57.8 kDa
Gene Summary:	Tyrosine protein phosphatase which functions as a dosage-dependent inducer of mitotic progression. Directly dephosphorylates CDK1 and stimulates its kinase activity. Also dephosphorylates CDK2 in complex with cyclin E, in vitro (By similarity). Phosphorylation by PIM1 leads to an increase in phosphatase activity (By similarity).[UniProtKB/Swiss-Prot Function]