

Product datasheet for **MR208245**

Plrg1 (NM_016784) Mouse Tagged ORF Clone

Product data:

Product Type:	Expression Plasmids
Product Name:	Plrg1 (NM_016784) Mouse Tagged ORF Clone
Tag:	Myc-DDK
Symbol:	Plrg1
Synonyms:	AA958940; C80566; Tango4
Mammalian Cell Selection:	Neomycin
Vector:	pCMV6-Entry (PS100001)
E. coli Selection:	Kanamycin (25 ug/mL)



[View online »](#)

ORF Nucleotide Sequence:

>MR208245 ORF sequence
 Red=Cloning site Blue=ORF Green=Tags(s)

TTTTGTAATACGACTCACTATAGGGCGGCCGGAATTCGTCGACTGGATCCGGTACCGAGGAGATCTGCC
 GCC**CGCATCGCC**

ATGGTGGAGGAGTACAGAAGCATTCTGTACACACTGGTGTTCAGGTCATTGAAGAGGACCCATGACA
 TGTTTGGCTGATAATGGAAAACCGTCCTTTGGATGAAGAGAGTCACAAGCGGAAAAATGGCAATCAA
 GCTTCGCAATGAGTATGGTCCTGTGCTGCATATGCCTACTTCAAAAAGAGAACCTTAAGGAGAAGGGACCT
 CAGAACGCAACAGACTCATATCCTCATAAGCAGTATCCCGCCAACCAAGGACAAGATGTTGAGTATTTGG
 TGACAGGCACCCATCCATACCCAGCAGGACCCGGTGTTCCTTGACTGCTGATACTAAGATCCAGAGAAT
 GCCAAGTGAAGTGCAGTGCACAGTCCCTCGCTGTGGCGTTACCGTCCAGACCAGAGTTGATGCAAAATCGT
 ACTGGGCTGCTGGAAGTGAAGTACCGACACCCAGGGGCTTCTGACCGTCCAGCCACAGCAATGAATT
 CTATTATGGAGACCGGCAACACTAAGAAGTCTGCACTAATGGCGAAAAAGCCCCACGATGCCCAAAC
 CCAGTGGCACCCACCGTGGAAACTCTACAGGGTATCAGTGGGCATCTTGCTGGGTTCCGGTGTATCGCT
 GTGGAACCTGGAAATCAGTGGTTCTGTTACAGGATCTGCTGACAGAACCATAAAGATTTGGGACTTGGCTA
 GTGGCAAATTAAGCTGTCTGTTGACTGGCCACATCAGTACAGTGCCTGGTGTGATCGTGAGCAGCAGGAG
 TCCTTATTTGTTCTTTGTGGAGAAGACAAACAAGTGAAGTGTGGGATCTTGAATATAACAAGGTGATA
 CGGCACATCATGGCCATCTAAGTGCAGTGTATGGTCTGGATTTGCACCAACATTTGGATGTCTCTGGTGA
 CTTGTAGTCGAGATCCACTGCTCGGATCTGGGACGTGAGAACTAAAGCCAGTGTACACACTTTGTCTGG
 ACACACAAATGCAGTTGCTACCGTGAGATGCCAGGCTGCAGAGCCACAGATCATTACAGGAAGTCAAGT
 ACCACAATACGATTATGGGATCTAGTGGCTGGAAAGACACGAGTGCAGTGCAGCAACCAATAAGAAATCAG
 TGAGGGCTGTGGTCTTACATCCGCTACTTTACACATTTGCGTCTGGTTCTCCAGATAACATAAAGCAGT
 GAAATTCGCCGATGGAGGCTTCATTCAAAATCTCTCTGGTCACAATGCAATCATTAAACACGCTGGCGGTC
 AATGCTGATGGAGTGTCTGTCTGGAGCTGACAAATGGCACCATGCACCTTTGGGACTGGAGAAGTGGCT
 ATAATTTTCAGCGCTCCATGCAGCTGTACAGCCTGGGCTTTTGGACAGTGAAGTCAAGGAATATTTGCTTG
 TGCTTTTCGATCGGTGAGAAAGTCGGTACTAACGGCTGAAGCTGATAAAACCATTAAGTTTACAGAGAG
 GATGAGACTGCGACAGAAGAACTACCCAGTCACTGGAACCAGAAATATCAAGAGAAAGCGATT

ACGCGTACGCGGCCGCTCGAGCAGAAACTCATCTCAGAAGAGGATCTGGCAGCAATGATATCTGGATT
ACAAGGATGACGACGATAAGGTTTAA

Protein Sequence:

>MR208245 protein sequence
 Red=Cloning site Green=Tags(s)

MVEEVQKHSVHTLVFRSLKRTHDMFVADNGKPVPLDEESHKRKMAIKLRNEYGPVLMPTSKENLKEKGP
 QNATDSYPHKQYPANQGQDVEYLVGTGHPYPAGPGVALTADTKIQRMPSESAAQSLAVALPSQTRVDANR
 TGPAGSEYRHPGASDRSQPTAMNSIMETGNTKNSALMAKKAPTMPKPQWHPPWKLYRVISGHLGWVRCIA
 VEPGNQWFVTGSADRTIKIWDLASGKLLSLTGHISTVRGVIVSTRSPYLFSCGEDKQVKCWDLEYNKVI
 RHYHGHL SAVYGLDLHPTLDVLTCSRSTARIWDVRTKASVHTLSGHTNAVATVRCQAAEPQIITGSHD
 TTIRLWDLVAGKTRVTLTNHKS SVRAVVLHPLL YTFASGSPDNIKQWKFPDGGFIQNL SGHNAIINTLAV
 NADGVLVSGADNGTMHLWDWRTGYNFQRVHA AVQPGSLDSESGIFACAFDRSESRLLTAEADKTIKVVRE
 DETATEETHPVSWKPEIIKRKRF

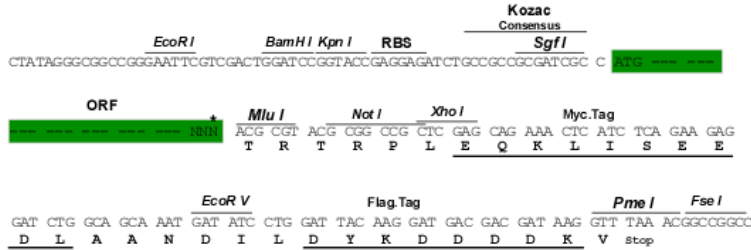
TRTRPLEQKLI SEEDLAANDILDYKDDDDKV

Restriction Sites:

Sgfl-Mlul

Cloning Scheme:

Cloning sites used for ORF Shutting:



* The last codon before the Stop codon of the ORF

ACCN: NM_016784

ORF Size: 1542 bp

OTI Disclaimer: The molecular sequence of this clone aligns with the gene accession number as a point of reference only. However, individual transcript sequences of the same gene can differ through naturally occurring variations (e.g. polymorphisms), each with its own valid existence. This clone is substantially in agreement with the reference, but a complete review of all prevailing variants is recommended prior to use. [More info](#)

OTI Annotation: This clone was engineered to express the complete ORF with an expression tag. Expression varies depending on the nature of the gene.

Components: The ORF clone is ion-exchange column purified and shipped in a 2D barcoded Matrix tube containing 10ug of transfection-ready, dried plasmid DNA (reconstitute with 100 ul of water).

- Reconstitution Method:**
1. Centrifuge at 5,000xg for 5min.
 2. Carefully open the tube and add 100ul of sterile water to dissolve the DNA.
 3. Close the tube and incubate for 10 minutes at room temperature.
 4. Briefly vortex the tube and then do a quick spin (less than 5000xg) to concentrate the liquid at the bottom.
 5. Store the suspended plasmid at -20°C. The DNA is stable for at least one year from date of shipping when stored at -20°C.

RefSeq: [NM_016784.3](#)

RefSeq Size: 1771 bp

RefSeq ORF: 1542 bp

Locus ID: 53317

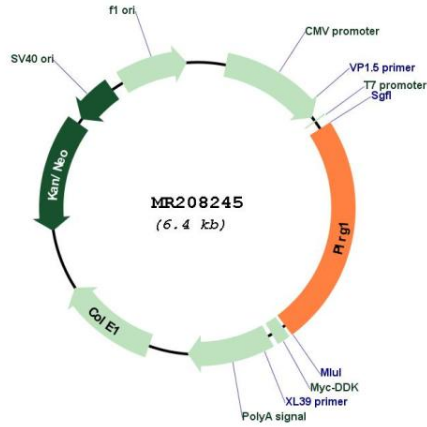
UniProt ID: [Q922V4](#)

Cytogenetics: 3 E3

MW: 56.9 kDa

Gene Summary: Involved in pre-mRNA splicing as component of the spliceosome. Component of the PRP19-CDC5L complex that forms an integral part of the spliceosome and is required for activating pre-mRNA splicing.[UniProtKB/Swiss-Prot Function]

Product images:



Circular map for MR208245