

Product datasheet for **MR208177**

Cdh8 (BC060200) Mouse Tagged ORF Clone

Product data:

Product Type:	Expression Plasmids
Product Name:	Cdh8 (BC060200) Mouse Tagged ORF Clone
Tag:	Myc-DDK
Symbol:	Cdh8
Synonyms:	AI851472; cad8
Vector:	pCMV6-Entry (PS100001)
E. coli Selection:	Kanamycin (25 ug/mL)
Cell Selection:	Neomycin



[View online »](#)

ORF Nucleotide Sequence:

>MR208177 representing BC060200
 Red=Cloning site Blue=ORF Green=Tags(s)

TTTTGTAATACGACTCACTATAGGGCGGCCGGAATTCGTCGACTGGATCCGGTACCGAGGAGATCTGCC
 GCC**CGGATCGCC**

ATGCCAGAAAGGCTAGCTGAGACGCTCATGGACCTCTGGACTCCATTAATAATATTATGGATTACCCTCC
 CTCTTGTGTATACACGGCTCCGATGAATCAGGCTCACGTTTTAACTACTGGATCCCTTTGGAAC TAAG
 CAGGCAGAGTGAAGACATGCGGATTTTGTAGCCGCTCCAAAAGAGGCTGGGTTTGGAAATCAAATGTTTGT
 CTGGAAGAATTTCTGGACCTGAACCGATTCTCGTTGGCCGTTACACACAGATCTGGATCCTGGAAGCA
 AAAAAATCAAGTATATCCTATCGGGTATGGAGCTGGCACAATCTTCAAATAAATGATATAACTGGAGA
 TATCCATGCTATCAAAGACTTGACCGAGAGGAAAAGGCTGAATATACGTTAACGGCTCAGGCAGTGGAC
 TTTGAGACAAACAAGCCCTTGAGCCTCCTTCTGAATTTATTATTAAGGTTCAAGATATCAACGACAATG
 CACCTGAGTTCCTCAATGGACCTTATCATGCTACTGTTCCAGAGATGTCCATTTTGGGTACATCTGTAC
 TAATGTAAGTCCACTGATGCTGACGACCCAGTTTATGAAAACAGTGCAAAGTTGGTTTACAGTATCTTG
 GAGGGACAGCCGATTTTTCCATTGAGCCTGAAACAGCCATTATAAAAAATGCCCTTCTAACATGGACA
 GAGAAGCCAAGGAGGAATACCTGGTCGTAATACAAGCCAAGATATGGGTGGACACTCTGGTGGTCTGTC
 TGGAAACCAACACTCACAGTGACCCTGACTGATGTTAATGACAATCCTCCAAAATTTGCTCAGAGTTTG
 TATCACTTCTCAGTACCAGAAGATGTGGTCTTGGCACTGCGATAGGAAGGGTTAAGGCTAATGATCAGG
 ATATTGGTGAAAATGCACAATCATCCTATGACATCATTGATGGAGATGGGACAGCACTATTCGAAATCAC
 TTCTGATGCCAGGCCAGGATGGTGTATAAGACTGAGAAAAGCCTCTGGACTTTGAGACCAAAAAATCC
 TATACTCTGAAGTGGAAGCAGCCAATATCCACATCGACCCAGTTTTCAGTAGCAGGGGACCCCTTAAGG
 ATACAGCAACAGTCAAAAATGCTGTAGAGGATGCTGATGAGCCTCCGGTCTTCTCTCACCAACTACCT
 CCTTGAAGTTCATGAAAATGCTGCTTGAAGTCTGTGATTGGCCAAGTGACAGCTCGTGACCCTGATATC
 ACTTCCAGTCCAATAAGGTTTTCCATTGACCGCCACACTGACCTGGAAAGACAGTTCAACATCAATGCAG
 ATGATGGGAAGATAAACTGGCAACTCCACTGGACAGAGAACTAAGTGTGGCACATCACCATCATTGC
 TACTGAGATCAGTCATTCAAACAGTAAGTGCCATGGACAAAGACGATCCCAAAAACGGACATTTTTCTT
 GTACAGCTTCTTCCAGAAATGGTCAACAACCCAAATTTACCATCAAGAAAA

ACGCGTACGCGGCCGCTCGAGCAGAAACTCATCTCAGAAGAGGATCTGGCAGCAAATGATATCTGGATT
 ACAAGGATGACGACGATAAGGTTTAA

Protein Sequence:

>MR208177 representing BC060200
 Red=Cloning site Green=Tags(s)

MPERLAETLMDLWTLPIILWITLPCVYTAPMNQAHVLTGSPLELSRQSEDMRILSRSKRGWVWNQMFV
 LEEFSGPEPILVGRHTDLDPGSKKIKYILSGDGAGTIFQINDITGDIHAIKRLDREEKAEYTLTAQAVD
 FETNKLEPPSEFIIKVQDINDNAPEFLNGPYHATVPMSILGTSVNTVATDADDPVYGN SAKLVYSIL
 EGQPYFSIEPETAIKLTALPNMDREAKEEYLVVIQAKDMGGHSGGLSGTTTLTVTLTDVNDNPPKFAQSL
 YHFSVPEDVVLGTAIGRVKANDQDIGENAQSSYDIIDGDGTALFEITSDAQADGVIRLRKPLDFETKKS
 YTLKVEAANIHIIDPRFSSRGPFKDTATVKIVVEDADEPPVSSPTYLLEVHENAALNSVIGQVTARDPDI
 TSSPIRFSIDRHTDLERQFNINADDGKITLATPLDRELSVWHITIIATEISHSNSKCHGQRRSQKRTFFL
 VQSSSRNGQQPKFHHQEK

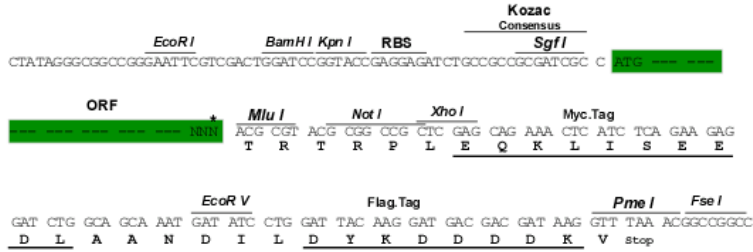
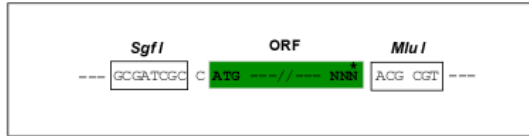
TRTRPLEQKLISEEDLAANDILDYKDDDDKV

Restriction Sites:

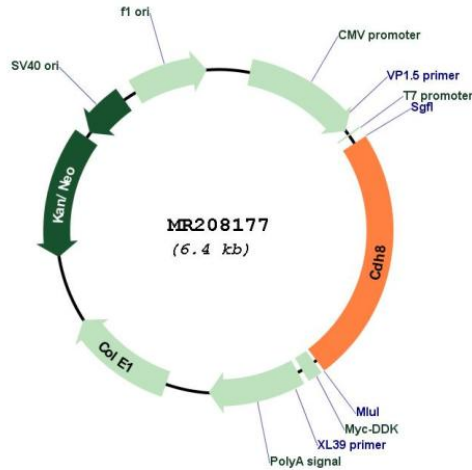
SgfI-MluI

Cloning Scheme:

Cloning sites used for ORF Shutting:



* The last codon before the Stop codon of the ORF

Plasmid Map:


ACCN: BC060200

ORF Size: 1524 bp

OTI Disclaimer: The molecular sequence of this clone aligns with the gene accession number as a point of reference only. However, individual transcript sequences of the same gene can differ through naturally occurring variations (e.g. polymorphisms), each with its own valid existence. This clone is substantially in agreement with the reference, but a complete review of all prevailing variants is recommended prior to use. [More info](#)

OTI Annotation: This clone was engineered to express the complete ORF with an expression tag. Expression varies depending on the nature of the gene.

Components: The ORF clone is ion-exchange column purified and shipped in a 2D barcoded Matrix tube containing 10ug of transfection-ready, dried plasmid DNA (reconstitute with 100 ul of water).

Reconstitution Method:

1. Centrifuge at 5,000xg for 5min.
2. Carefully open the tube and add 100ul of sterile water to dissolve the DNA.
3. Close the tube and incubate for 10 minutes at room temperature.
4. Briefly vortex the tube and then do a quick spin (less than 5000xg) to concentrate the liquid at the bottom.
5. Store the suspended plasmid at -20°C. The DNA is stable for at least one year from date of shipping when stored at -20°C.

RefSeq: [BC060200](#)

RefSeq Size: 4334 bp

RefSeq ORF: 1526 bp

Locus ID: 12564

Cytogenetics: 8 49.4 cM

MW: 158.8 kDa

Gene Summary: This gene encodes a member of the cadherin family of calcium-dependent glycoproteins that mediate cell adhesion and regulate many morphogenetic events during development. The encoded preproprotein is further processed to generate a mature protein. Mice lacking the encoded protein exhibit reduced behavioral responses to cold, but not thermal stimuli. Alternative splicing results in multiple transcript variants encoding different isoforms that may undergo similar proteolytic processing. Multiple distinct genes of the cadherin family, including this gene, are found on chromosome 8. [provided by RefSeq, Oct 2015]