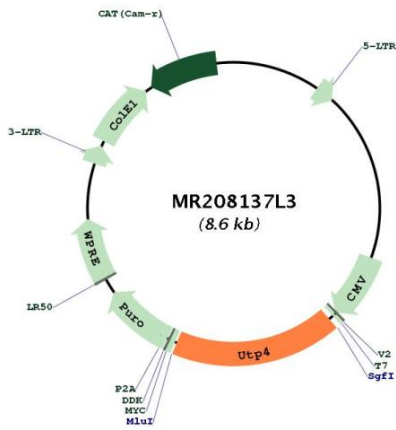




<b>OTI Disclaimer:</b>	The molecular sequence of this clone aligns with the gene accession number as a point of reference only. However, individual transcript sequences of the same gene can differ through naturally occurring variations (e.g. polymorphisms), each with its own valid existence. This clone is substantially in agreement with the reference, but a complete review of all prevailing variants is recommended prior to use. <a href="#">More info</a>
<b>OTI Annotation:</b>	This clone was engineered to express the complete ORF with an expression tag. Expression varies depending on the nature of the gene.
<b>Components:</b>	The ORF clone is ion-exchange column purified and shipped in a 2D barcoded Matrix tube containing 10ug of transfection-ready, dried plasmid DNA (reconstitute with 100 ul of water).
<b>Reconstitution Method:</b>	<ol style="list-style-type: none"><li>1. Centrifuge at 5,000xg for 5min.</li><li>2. Carefully open the tube and add 100ul of sterile water to dissolve the DNA.</li><li>3. Close the tube and incubate for 10 minutes at room temperature.</li><li>4. Briefly vortex the tube and then do a quick spin (less than 5000xg) to concentrate the liquid at the bottom.</li><li>5. Store the suspended plasmid at -20°C. The DNA is stable for at least one year from date of shipping when stored at -20°C.</li></ol>
<b>RefSeq:</b>	<a href="#">NM_011574.1</a> , <a href="#">NP_035704.1</a>
<b>RefSeq Size:</b>	2255 bp
<b>RefSeq ORF:</b>	2061 bp
<b>Locus ID:</b>	21771
<b>UniProt ID:</b>	<a href="#">Q8R2N2</a>
<b>Cytogenetics:</b>	8 D3
<b>Gene Summary:</b>	Ribosome biogenesis factor. Involved in nucleolar processing of pre-18S ribosomal RNA. Involved in small subunit (SSU) pre-rRNA processing at sites A', A0, 1 and 2b. Required for optimal pre-ribosomal RNA transcription by RNA polymerase. May be a transcriptional regulator. Acts as a positive regulator of HIVEP1.[UniProtKB/Swiss-Prot Function]

Product images:



Circular map for MR208137L3