

## Product datasheet for MR207836L3

### Whdc1 (BC050804) Mouse Tagged Lenti ORF Clone

#### Product data:

Product Type:	Expression Plasmids
Product Name:	Whdc1 (BC050804) Mouse Tagged Lenti ORF Clone
Tag:	Myc-DDK
Symbol:	Whdc1
Synonyms:	MGC51670, mKIAA1971
Mammalian Cell Selection:	Puromycin
Vector:	pLenti-C-Myc-DDK-P2A-Puro (PS100092)
E. coli Selection:	Chloramphenicol (34 ug/mL)
ORF Nucleotide Sequence:	The ORF insert of this clone is exactly the same as(MR207836).
Restriction Sites:	SgfI-MluI
Cloning Scheme:	

Cloning sites used for ORF Shuttling:



\* The last codon before the Stop codon of the ORF.

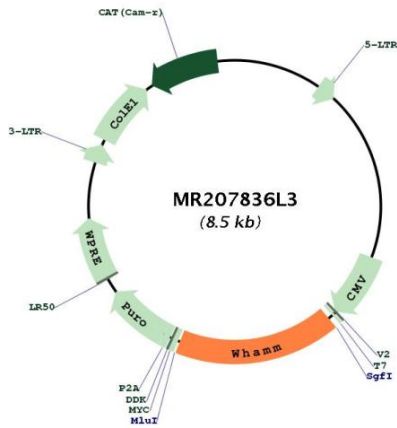
ACCN:	BC050804
ORF Size:	1467 bp



[View online »](#)

<b>OTI Disclaimer:</b>	The molecular sequence of this clone aligns with the gene accession number as a point of reference only. However, individual transcript sequences of the same gene can differ through naturally occurring variations (e.g. polymorphisms), each with its own valid existence. This clone is substantially in agreement with the reference, but a complete review of all prevailing variants is recommended prior to use. <a href="#">More info</a>
<b>OTI Annotation:</b>	This clone was engineered to express the complete ORF with an expression tag. Expression varies depending on the nature of the gene.
<b>Components:</b>	The ORF clone is ion-exchange column purified and shipped in a 2D barcoded Matrix tube containing 10ug of transfection-ready, dried plasmid DNA (reconstitute with 100 ul of water).
<b>Reconstitution Method:</b>	<ol style="list-style-type: none"><li>1. Centrifuge at 5,000xg for 5min.</li><li>2. Carefully open the tube and add 100ul of sterile water to dissolve the DNA.</li><li>3. Close the tube and incubate for 10 minutes at room temperature.</li><li>4. Briefly vortex the tube and then do a quick spin (less than 5000xg) to concentrate the liquid at the bottom.</li><li>5. Store the suspended plasmid at -20°C. The DNA is stable for at least one year from date of shipping when stored at -20°C.</li></ol>
<b>RefSeq:</b>	<a href="#">BC050804.1</a>
<b>RefSeq Size:</b>	2039 bp
<b>RefSeq ORF:</b>	1469 bp
<b>Locus ID:</b>	434204
<b>Cytogenetics:</b>	7 D3
<b>Gene Summary:</b>	Acts as a nucleation-promoting factor (NPF) that stimulates Arp2/3-mediated actin polymerization both at the Golgi apparatus and along tubular membranes. Involved as a regulator of Golgi positioning and morphology. Its activity in membrane tubulation requires F-actin and interaction with microtubules. Proposed to use coordinated actin-nucleating and microtubule-binding activities of distinct WHAMM molecules to drive membrane tubule elongation; when MT-bound can recruit and remodel membrane vesicles but is prevented to activate the Arp2/3 complex. Required for RhoD-dependent actin reorganization such as in cell adhesion and cell migration (By similarity). Participates in vesicle transport between the reticulum endoplasmic and the Golgi complex.[UniProtKB/Swiss-Prot Function]

Product images:



Circular map for MR207836L3