

Product datasheet for **MR207659**

Dirc2 (NM_153550) Mouse Tagged ORF Clone

Product data:

Product Type:	Expression Plasmids
Product Name:	Dirc2 (NM_153550) Mouse Tagged ORF Clone
Tag:	Myc-DDK
Symbol:	Dirc2
Synonyms:	RCC4
Mammalian Cell Selection:	Neomycin
Vector:	pCMV6-Entry (PS100001)
E. coli Selection:	Kanamycin (25 ug/mL)



[View online »](#)

ORF Nucleotide Sequence:

>MR207659 representing NM_153550
 Red=Cloning site Blue=ORF Green=Tags(s)

TTTTGTAATACGACTCACTATAGGGCGGCCGGGAATTCGTCGACTGGATCCGGTACCGAGGAGATCTGCC
 GCC**CGCATCGCC**

ATGGGCTCGGGTTGGAGCAGCGAGGAGGAGGAGCGGCAGCCGCTGCTGGGGCCGGGGCTCGGGCCTGCGC
 CGGGGCTGCGCGCAGGGGCCGGGAGGCGACGGCCGTGCTGCCTGCGGCGGGCCGAACCCGGGAGGGT
 GTACGGGCGCCGCTGGCTGGTGTGCTGCTCTTCTCGCTCCTCGCGTTCGCCAGGGCCTGGTCTGGAAC
 ACCTGGGGCCCCATCCAGAACTCGGCGCGCCAGGCCTATGGCTTCTCCGGATGGGACATCGCGCTCTGG
 TCCTCTGGGGGCCATAGGCTTCTGCCCTGCTTCGCGTTCATGTGGCTGCTGGACAAGAGAGGTCTGCG
 GGTCACTGTGCTTCTGACGTCATTTCTTATGGTTTTGGAACTGGTCTACGATGCATACCTGTATCAGAC
 TTAGCCCTTAAGAAAAGGCTAATCCATGGGGGACAGATACTGAACGGACTGGCAGGTCGGACTGTCATGA
 ATGCGGCGCCATTCTCTACGACGTGGTTCTCTGCTGACGAGCGAGCCACTGCCACAGCAATCGCATC
 AATGCTGAGTTACCTCGGTGGAGCGTGTGCGTTTTCTCGTGGGCCCTGGTTGTTCCAGCTCCCAACGGG
 ACGGCACCCCTTCTCGTGCAGAGAGTAGCAGGGCTCATATTAAGACCGAATCGAGACCGTGTGTATG
 CAGAAATTTGGAGTTGTCTGCCTAATATTCTCTGCCACGCTAGCTTATTTCCGCCCGGCCCTCTCTTCC
 TCCAGTGTGCTGCTGCGAGCCAGCGGCTGAGTTACCGCGGAGCTTTTGTAGGTTACTAAGCAATTTG
 AGGTTTTTGATGATTGCTTAGCATACGCAATACCACTTGGTGTGTTGCTGGCTGGTCTGGAGTTCTGG
 ACTTAATTTAACACCAGTGCATGTGCAAGTAGACGCTGGCTGGATTGGATTCTGGTCCATAGTTGG
 AGGCTGTGTTGTTGGGATAGCTATGGCAAGGTTTGGGATTTTATCCGGGCATGCTGAACTGATCCTG
 CTCCTCTGTTTTCTGGGGTACCCTGTGTCACGTGGTTCACCCTGACCTGCCTAAACAGCATCACCC
 ACTTGCCTTTGACAACAGTGACATTGTATGCCTCCTGCATCCTCTGGGAGTGTCTGAAACAGCAGCGT
 CCCCATATTCTTTGAGCTTTTTGTGAAACGGTCTACCCGTTCCAGAAGGGATCACCTGTGGAGTTGTC
 ACCTTTTTAAGTAATATGTTTATGGGAGTGCTTTTATTTTTGTACATTTTATCATACAGAGTTGTCTT
 GGTCAACTGGTGCCTTCTGGGTGCTGTCTGCTCAGTCTCCTTCTGATTCTGTGCTTACAGGAATCCTA
 TGACAGACTCTACCTTGACGTGGTCTCGGTT

ACGCGTACGCGGCCGCTCGAGCAGAACTCATCTCAGAAGAGGATCTGGCAGCAATGATATCCTGGATT
 ACAAGGATGACGACGATAAGGTTTAA

Protein Sequence:

>MR207659 representing NM_153550
 Red=Cloning site Green=Tags(s)

MGSWSSEEEERQPLLPGLGPAPGAARRGREATAVLPAAGPNPGRVYGRRLVLLLFSLLAFAQGLVWN
 TWGPIQNSARQAYGFSGWDIALLVWPIGFLPCFAFMWLLDKRGLRVTVLLTSFLMVLGTGLRCIPVSD
 LALKKRLIHGGQILNLAGPTVMNAAPFLSTTWFSADERATATAIASMLSYLGGACAFVGLVVPAPNG
 TAPLLAAESSRAHIKDRIETVLVYAEFGVVCLIFSATLAYFPPRPLPPSVAASQRLSYRRSFCRLLSNL
 RFLMIALAYAIPLGVFAGWSGLDLILTPVHVSQVDAGWIGFWSIVGGCVVGIAMARFADFIRGMLKLIL
 LLLFSGATLSSTWFTLTCLNSITHLPLTTVTLYASCILLGVFLNSSVPIFFELFVETVYPVEGITCGVV
 TFLSNMFMGVLLFFVTFYHTELSWFNWCLPGSCLLSLLLILCFRESYDRLYLDVVVSV

TRTRPLEQKLISEEDLAANDILDYKDDDDKV

Chromatograms:

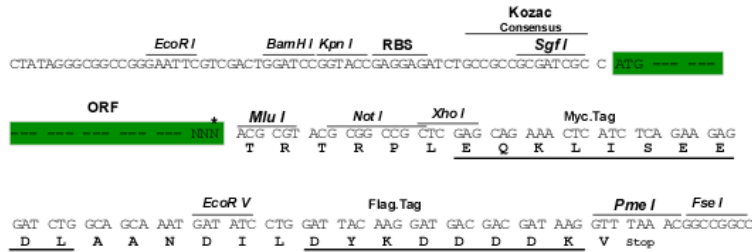
https://cdn.origene.com/chromatograms/mm9016_h08.zip

Restriction Sites:

Sgfl-MluI

Cloning Scheme:

Cloning sites used for ORF Shutting:



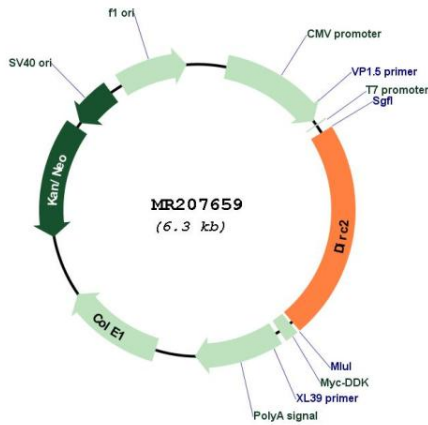
* The last codon before the Stop codon of the ORF

ACCN:	NM_153550
ORF Size:	1434 bp
OTI Disclaimer:	The molecular sequence of this clone aligns with the gene accession number as a point of reference only. However, individual transcript sequences of the same gene can differ through naturally occurring variations (e.g. polymorphisms), each with its own valid existence. This clone is substantially in agreement with the reference, but a complete review of all prevailing variants is recommended prior to use. More info
OTI Annotation:	This clone was engineered to express the complete ORF with an expression tag. Expression varies depending on the nature of the gene.
Components:	The ORF clone is ion-exchange column purified and shipped in a 2D barcoded Matrix tube containing 10ug of transfection-ready, dried plasmid DNA (reconstitute with 100 ul of water).
Reconstitution Method:	<ol style="list-style-type: none"> 1. Centrifuge at 5,000xg for 5min. 2. Carefully open the tube and add 100ul of sterile water to dissolve the DNA. 3. Close the tube and incubate for 10 minutes at room temperature. 4. Briefly vortex the tube and then do a quick spin (less than 5000xg) to concentrate the liquid at the bottom. 5. Store the suspended plasmid at -20°C. The DNA is stable for at least one year from date of shipping when stored at -20°C.
RefSeq:	<u>NM_153550.4</u>
RefSeq Size:	4554 bp
RefSeq ORF:	1437 bp
Locus ID:	224132
UniProt ID:	<u>Q8BFQ6</u>
Cytogenetics:	16 B3

MW: 52.4 kDa

Gene Summary: Electrogenic metabolite transporter.[UniProtKB/Swiss-Prot Function]

Product images:



Circular map for MR207659