

Product datasheet for **MR207508**

Pold2 (NM_008894) Mouse Tagged ORF Clone

Product data:

Product Type:	Expression Plasmids
Product Name:	Pold2 (NM_008894) Mouse Tagged ORF Clone
Tag:	Myc-DDK
Symbol:	Pold2
Synonyms:	50kDa; p50; po1D2
Mammalian Cell Selection:	Neomycin
Vector:	pCMV6-Entry (PS100001)
E. coli Selection:	Kanamycin (25 ug/mL)



[View online »](#)

ORF Nucleotide Sequence:

>MR207508 ORF sequence
 Red=Cloning site Blue=ORF Green=Tags(s)

TTTTGTAATACGACTCACTATAGGGCGGCCGGAATTCGTCGACTGGATCCGGTACCGAGGAGATCTGCC
 GCC**CGGATCGCC**

ATGTTCTCCGAGCAGGCAGCACAGAGGGCCACACTCTGCTCGCCCCGCCCTCTGCCAGCAATGCCACCT
 TTGCCCGGTACCTGTGGCAACTTACACCAACTCCTCACAGCCCTCCGACTGGGAGAGCGCAGCTTTAA
 CCGGCAGTACGCCATATTTATGCCACCCGCTCATCCAGATGAGACCGTTCCTGGTGAGCCGGGCGCAG
 CAACACTGGGGCAGCCGAGTTGAAGTGAAGAAGTTGTGTGAGCTGCAGCCTGGGAGCAGTGCTGTGTGG
 TGGGCAGCTGTTCAAAGCCATGTCCCTCCAACCTCCATCCTGCGGGAGATCAGCGAGGAGCACAACCT
 GGTCCCCCAGCCTCCACGGAGCAAATATATCCACCCGGATGACGAGCTGGTCTTAGAAGATGAGCTGCAG
 CGTATCAAAGTGAAGGCCACATTGATGTGTCAAAGCTGGTCACAGGAACGGTCTTGCCGTGTTGGGCT
 CTGCGAAAGATGACGGGAGGTTTTCAGTTGAAGACCACTGCTTTGCTGACCTGGTCCACAGAAGCCGGT
 ACCCCCACTTGACACAGACAGATTTGTGCTACTGGTATCCGGACTGGGCCTGGGCGGTGGTGGCGGGAG
 AGCCTCCTGGGCACCCAGCTGCTGGTGGACGTGGTGACGGGACAGCTTGGGGACGAAGGAGAACAGTGCA
 GTGCTGCCACGTCTCTCGAGTCATCCTCGCAGGCAACCTGCTCAGCCATAACACCCAGAGCAGAGACTC
 CATCAACAAGGCCAAATACCTTACCAAGAAAACCCAGGCAGCCAGTGTGGAGGCAGTCAAATGCTGGAC
 GAGATCCTTCTGCAACTGAGTGCCTCGGTACCGGTGGATGTGATGCCAGGCGAGTTTGTATCCCAACT
 ATACACTCCCGCAGCAGCCCTGCACCCCTGCATGTTCCCGCTGGCCACCCGCTACTCCACACTCCAGCT
 GGTACCAACCCATACCAAGCCACCATGATGGAGTAAGTTCCTGGGACATCTGGACAGAACGTGAGT
 GATATCTTCCGGTATAGCAGCATGGAAGACCATTAGAGATCCTAGAGTGGACCCCTGCGGGTTCGTCACA
 TCAGCCCCACGGCTCCAGACACCCTAGGGTGCTACCCCTTCTACAAAACCGACCCGTTTATCTTTCCGGA
 ATGTCCTCAGCTACTTCTGTGGCAACACCCCAAGCTTTGGTTCCAAAATCATCCGAGGTCCTGAGGAC
 CAGGTAGTGCTGTTAGTGCTGTTCTGACTTCAGTTCACACAGACGGCCTGCCTAGTGAACCTACGCA
 GCCTGGCCTGCCAGCCTATCAGCTTTGCGGGCTTCGGGGCAGAGCAAGAGGACCTGGAGGGCCTGGGGCT
 GGGTCCC

ACGCGTACGCGGCCGCTCGAGCAGAAAACCTCATCTCAGAAGAGGATCTGGCAGCAAATGATATCCTGGATT
 ACAAGGATGACGACGATAAGGTTTAA

Protein Sequence:

>MR207508 protein sequence
 Red=Cloning site Green=Tags(s)

MFSEQAAQRAHTLLAPPSASNATFARVPVATYTNSSQPFRLGERSFNQYAHIIYATRLIQMRPFLVSRAQ
 QHWGSRVEVKKLCELQPGEQCCVVGTLFKAMSLQPSILREISEEHNLPQPPRSKYIHPDDELVLEDELQ
 RIKLKGTIDVSKLVTGTVLAVLGSADDDGRFQVEDHCFADLAPQKPVPPPLDTRFVLLVSLGLGGGGGE
 SLLGTQLLVVVTGQLGDEGEQCSAAHVSRLVILAGNLLSHNTQSRDSINKAKYLTKKTAASVEAVKMLD
 EILLQLSASVPVDVMPGEFDPTNYTLPPQPLHPCMFPLATAYSTLQLVTNPYQATIDGVRFLGTSQNVS
 DIFRYSSMEDHLEILEWTLRVRHISPTAPDTLGCYPFYKTDPFIFPECPHYVFCGNTPSFGSKIIRGPED
 QVLLVAVPDFSSTQTAACLNLRLSLACQPI SFAGFGAEQEDLEGLGLGP

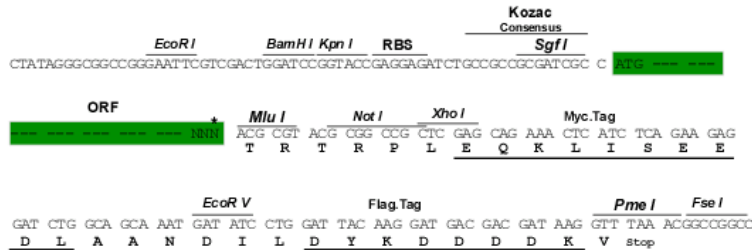
TRTRPLEQKLI SEEDLAANDILDYKDDDDKV

Restriction Sites:

SgfI-MluI

Cloning Scheme:

Cloning sites used for ORF Shutting:



* The last codon before the Stop codon of the ORF

ACCN: NM_008894

ORF Size: 1410 bp

OTI Disclaimer: The molecular sequence of this clone aligns with the gene accession number as a point of reference only. However, individual transcript sequences of the same gene can differ through naturally occurring variations (e.g. polymorphisms), each with its own valid existence. This clone is substantially in agreement with the reference, but a complete review of all prevailing variants is recommended prior to use. [More info](#)

OTI Annotation: This clone was engineered to express the complete ORF with an expression tag. Expression varies depending on the nature of the gene.

Components: The ORF clone is ion-exchange column purified and shipped in a 2D barcoded Matrix tube containing 10ug of transfection-ready, dried plasmid DNA (reconstitute with 100 ul of water).

Reconstitution Method:

1. Centrifuge at 5,000xg for 5min.
2. Carefully open the tube and add 100ul of sterile water to dissolve the DNA.
3. Close the tube and incubate for 10 minutes at room temperature.
4. Briefly vortex the tube and then do a quick spin (less than 5000xg) to concentrate the liquid at the bottom.
5. Store the suspended plasmid at -20°C. The DNA is stable for at least one year from date of shipping when stored at -20°C.

RefSeq: [NM_008894.2](#), [NP_032920.2](#)
RefSeq Size: 1634 bp

RefSeq ORF: 1410 bp

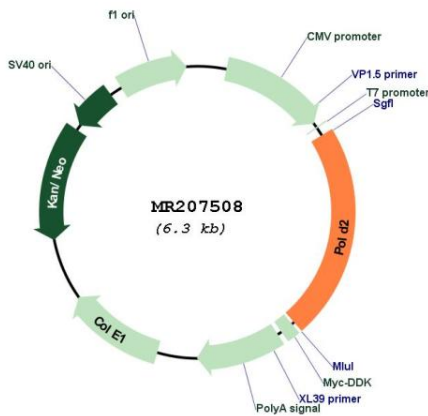
Locus ID: 18972

UniProt ID: [O35654](#)

Cytogenetics: 11 A1
MW: 51.4 kDa

Gene Summary: As a component of the trimeric and tetrameric DNA polymerase delta complexes (Pol-delta3 and Pol-delta4, respectively), plays a role in high fidelity genome replication, including in lagging strand synthesis, and repair. Pol-delta3 and Pol-delta4 are characterized by the absence or the presence of POLD4. They exhibit differences in catalytic activity. Most notably, Pol-delta3 shows higher proofreading activity than Pol-delta4. Although both Pol-delta3 and Pol-delta4 process Okazaki fragments in vitro, Pol-delta3 may also be better suited to fulfill this task, exhibiting near-absence of strand displacement activity compared to Pol-delta4 and stalling on encounter with the 5'-blocking oligonucleotides. Pol-delta3 idling process may avoid the formation of a gap, while maintaining a nick that can be readily ligated. Along with DNA polymerase kappa, DNA polymerase delta carries out approximately half of nucleotide excision repair (NER) synthesis following UV irradiation. Under conditions of DNA replication stress, required for the repair of broken replication forks through break-induced replication (BIR). Involved in the translesion synthesis (TLS) of templates carrying O6-methylguanine or abasic sites performed by Pol-delta4, independently of DNA polymerase zeta (REV3L) or eta (POLH). Facilitates abasic site bypass by DNA polymerase delta by promoting extension from the nucleotide inserted opposite the lesion. Also involved in TLS as a component of the POLZ complex. Along with POLD3, dramatically increases the efficiency and processivity of DNA synthesis of the minimal DNA polymerase zeta complex, consisting of only REV3L and REV7. [UniProtKB/Swiss-Prot Function]

Product images:



Circular map for MR207508