

Product datasheet for MR207312L4

Ttyh1 (NM_001001454) Mouse Tagged Lenti ORF Clone

Product data:

Product Type:	Expression Plasmids
Product Name:	Ttyh1 (NM_001001454) Mouse Tagged Lenti ORF Clone
Tag:	mGFP
Symbol:	Ttyh1
Synonyms:	4930459B04Rik; 6330408P11Rik; mTTY1; tty; TTY1
Mammalian Cell Selection:	Puromycin
Vector:	pLenti-C-mGFP-P2A-Puro (PS100093)
E. coli Selection:	Chloramphenicol (34 ug/mL)
ORF Nucleotide Sequence:	The ORF insert of this clone is exactly the same as(MR207312).
Restriction Sites:	SgfI-MluI
Cloning Scheme:	

Cloning sites used for ORF Shuttling:



* The last codon before the Stop codon of the ORF.

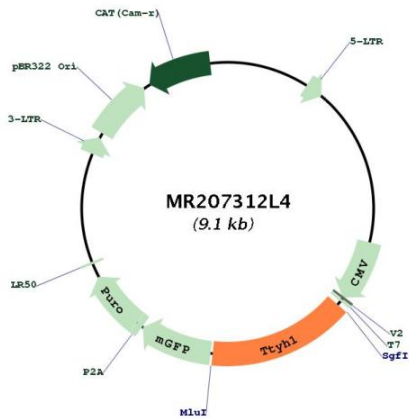
ACCN:	NM_001001454
ORF Size:	1383 bp



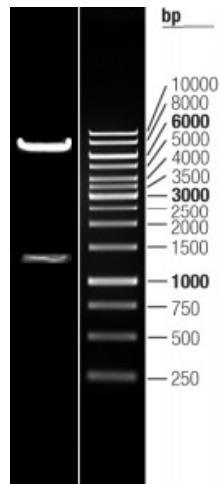
[View online »](#)

OTI Disclaimer:	The molecular sequence of this clone aligns with the gene accession number as a point of reference only. However, individual transcript sequences of the same gene can differ through naturally occurring variations (e.g. polymorphisms), each with its own valid existence. This clone is substantially in agreement with the reference, but a complete review of all prevailing variants is recommended prior to use. More info
OTI Annotation:	This clone was engineered to express the complete ORF with an expression tag. Expression varies depending on the nature of the gene.
Components:	The ORF clone is ion-exchange column purified and shipped in a 2D barcoded Matrix tube containing 10ug of transfection-ready, dried plasmid DNA (reconstitute with 100 ul of water).
Reconstitution Method:	<ol style="list-style-type: none">1. Centrifuge at 5,000xg for 5min.2. Carefully open the tube and add 100ul of sterile water to dissolve the DNA.3. Close the tube and incubate for 10 minutes at room temperature.4. Briefly vortex the tube and then do a quick spin (less than 5000xg) to concentrate the liquid at the bottom.5. Store the suspended plasmid at -20°C. The DNA is stable for at least one year from date of shipping when stored at -20°C.
RefSeq:	NM_001001454.1 , NP_001001454.1
RefSeq Size:	3842 bp
RefSeq ORF:	1383 bp
Locus ID:	57776
UniProt ID:	Q9D3A9
Cytogenetics:	7 A1
Gene Summary:	This gene encodes a member of the Tweety family of membrane proteins. Members of this family contain five predicted transmembrane regions that are arranged in a characteristic pattern. In mouse, the protein is predominantly localized to the endoplasmic reticulum and displays calcium binding activity. Targeted knock out of this gene results in early embryonic lethality prior to the blastocyst stage. Alternative splicing results in multiple transcript variants. [provided by RefSeq, Apr 2015]

Product images:



Circular map for MR207312L4



Double digestion of MR207312L4 using SgfI and MluI