

Product datasheet for **MR207308**

Htra2 (NM_019752) Mouse Tagged ORF Clone

Product data:

Product Type:	Expression Plasmids
Product Name:	Htra2 (NM_019752) Mouse Tagged ORF Clone
Tag:	Myc-DDK
Symbol:	Htra2
Synonyms:	AI481710; mnd2; Omi; Prss25
Mammalian Cell Selection:	Neomycin
Vector:	pCMV6-Entry (PS100001)
E. coli Selection:	Kanamycin (25 ug/mL)



[View online »](#)

ORF Nucleotide Sequence:

>MR207308 ORF sequence
 Red=Cloning site Blue=ORF Green=Tags(s)

TTTTGTAATACGACTCACTATAGGGCGGCCGGGAATTCGTCGACTGGATCCGGTACCGAGGAGATCTGCC
 GCC**CGGATCGCC**

ATGGCTGCGCTGAAAGCGGGCGGGGTGCAAACCTGGAGCCTTCGGGCATGGCGGGCTTTGGGGGCATCT
 TCTGGAGGAAGCCTCCCCGTTAGCTCCTGACCTCCGGGCTCTGCTGACGTCAGGAACTCCTGACTCTCA
 GATCTGGATGACTTATGGGACCCCCAGTCTCCCGCCAGGTGCCTGAGGGGTTCCCTGCATCACGGCA
 GATCTGACGCTAGGACCCCGGATCTCTGGGCACGATTGAATGTGGGGACTTCAGGCTCCAGTGACCAGG
 AGGCCCGCAGGAGCCCTGGAAGCCGTGGCGCGAATGGCTGGCGGTGGCGGTGGGCGCAGGAGGTGCAGT
 GGTGCTGCTGTTGTGGGGTTGGGGTCCGGGTCTTTCCACGGTGTGGCTGCTGTTCTGCTCCGCCACCC
 ACTTCTCCCCGGAGCCAGTACAATTTTCATCGCAGATGTGGTGGAGAAGACAGCCCCTGCTGTGGTCTATA
 TCGAGATCTAGACCGGCACCCCTTCTCCGGCCGTGAAGTCCCCATCTCAAACGGATCAGGATTCGTAGT
 GGCTTCAGATGGGCTCATCGTTACCAACGCCACGTGGTGGCTGATCGGGCCGAGTACGAGTGAGGCTG
 CCTAGCGGGGATACTTATGAGGCCATGGTACAGCTGTGGATCCCGTAGCAGACATTGCCACACTGAGGA
 TTCAAACCAAGGAGCCTCCTCCACACTGCCCTCGGCCGCTCTGCTGATGTCCGGCAAGGGGAGTTTGT
 TGTGGCATGGGAAGCCCTTTGCACTGCAAGACAGTACACATCTGGTATTGTGAGCTCTGCTCAGCGC
 CCAGCCAGGGACCTGGGACTCCCTCAAACAACGTGGAATACATTCAGACCGATGCAGCTATTGATTTTG
 GAAATTCGGTGGTCCCCTGGTTAACCTGGATGGGGAGGTGATTGGAGTGAACACCATGAAGGTGACAGC
 TGGAAATCCTTTGCCATCCCTTCTGATCGCCTTAGGGAGTTTCTGCATCGCGGGGAAAAGAAAAATTCC
 TGGTTTGAACCAAGTGGGTCCCAGCGCCCTACATTGGAGTGTGATGCTGACCTGACTCCCAGCATCC
 TTATTGAACTACAGTCCGTGAGCCAAGCTTCCCTGATGTTGAGCATGGTGTCTCATTATAAAGTTAT
 CCTGGGCTCCCCCGCACACAGGGCTGGTCTCGGCCCTGGTGTGATGATCTTGCCATTGGGAGAAAATTG
 GCACAAAATGCTGAAGATGTTTATGAAGCTGTTGAAACCAATCACAGCTGGCAGTGCAGGATCCGGCGCG
 GATCAGAGACTGATCTTATATGTGACCCCCGAGGTCACAGAA

ACGCGTACGCGGCCGCTCGAGCAGAACTCATCTCAGAAGAGGATCTGGCAGCAAATGATATCCTGGATT
 ACAAGGATGACGACGATAAGGTTTAA

Protein Sequence:

>MR207308 protein sequence
 Red=Cloning site Green=Tags(s)

MAALKAGRGANWSLRAWRALGGIFWRKPPLLAPDLRALLTSGTPDSQIWMYGTPLPAQVPEGFLASRA
 DLTSRTPDLWARLNVGTSRSSDQEARRSPGSRREWLAVAVGAGGAVVLLLWGWGRGLSTVLAAVPAPP
 TSPRSQYNFIAADVVEKTAPAVVYIEILDRHPFSGREVPISNGSGFVVASDGLIVTNAHVVADRRRVRVRL
 PSGDTYEAMVTAVDPAVADIATLRIQTKEPPPTLPLGRSADVRQGEFVAMGSPFALQNTITSGIVSSAQR
 PARDLGLPQNNVEYIQTDAIDFGNSGGPLVNLGDEVIGVNTMKVTAGISFAIPSDRLREFLHRGEKKN
 WFGTSGSQRRYIGVMMLTLTPSILIELQLREPSFPDVQHGVLIHKVILGSPAHRAGLRPGDVILAIKEKL
 AQAEDVVEAVRTQSQLAVRIRRGSETLILYVTPEVTE

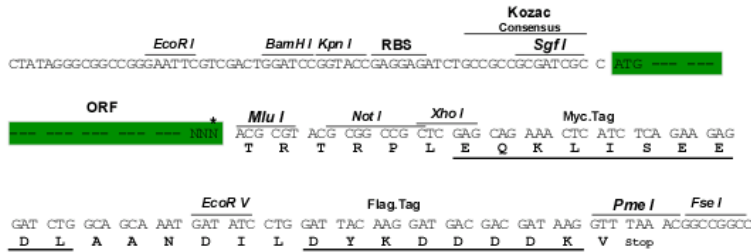
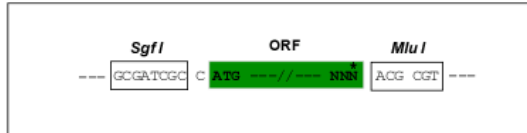
TRTRPLEQKLISEEDLAANDILDYKDDDDKV

Restriction Sites:

Sgfl-MluI

Cloning Scheme:

Cloning sites used for ORF Shutting:



* The last codon before the Stop codon of the ORF

ACCN: NM_019752

ORF Size: 1377 bp

OTI Disclaimer: The molecular sequence of this clone aligns with the gene accession number as a point of reference only. However, individual transcript sequences of the same gene can differ through naturally occurring variations (e.g. polymorphisms), each with its own valid existence. This clone is substantially in agreement with the reference, but a complete review of all prevailing variants is recommended prior to use. [More info](#)

OTI Annotation: This clone was engineered to express the complete ORF with an expression tag. Expression varies depending on the nature of the gene.

Components: The ORF clone is ion-exchange column purified and shipped in a 2D barcoded Matrix tube containing 10ug of transfection-ready, dried plasmid DNA (reconstitute with 100 ul of water).

Reconstitution Method:

1. Centrifuge at 5,000xg for 5min.
2. Carefully open the tube and add 100ul of sterile water to dissolve the DNA.
3. Close the tube and incubate for 10 minutes at room temperature.
4. Briefly vortex the tube and then do a quick spin (less than 5000xg) to concentrate the liquid at the bottom.
5. Store the suspended plasmid at -20°C. The DNA is stable for at least one year from date of shipping when stored at -20°C.

RefSeq: [NM_019752.2](#), [NP_062726.2](#)

RefSeq Size: 1739 bp

RefSeq ORF: 1377 bp

Locus ID: 64704

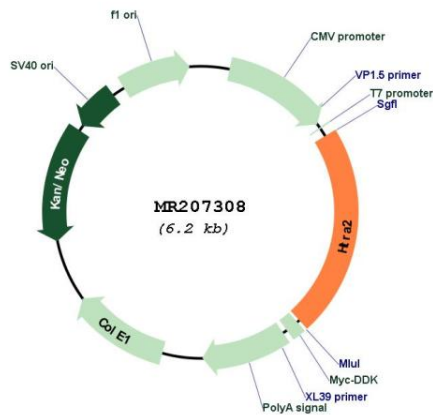
UniProt ID: [Q9JIY5](#)

Cytogenetics: 6 35.94 cM

MW: 49.3 kDa

Gene Summary: Serine protease that shows proteolytic activity against a non-specific substrate beta-casein. Promotes or induces cell death either by direct binding to and inhibition of BIRC proteins (also called inhibitor of apoptosis proteins, IAPs), leading to an increase in caspase activity, or by a BIRC inhibition-independent, caspase-independent and serine protease activity-dependent mechanism. Cleaves THAP5 and promotes its degradation during apoptosis (By similarity).[UniProtKB/Swiss-Prot Function]

Product images:



Circular map for MR207308