

Product datasheet for **MR207296**

Pax8 (NM_011040) Mouse Tagged ORF Clone

Product data:

Product Type:	Expression Plasmids
Product Name:	Pax8 (NM_011040) Mouse Tagged ORF Clone
Tag:	Myc-DDK
Symbol:	Pax8
Synonyms:	Pax; Pax-8
Mammalian Cell Selection:	Neomycin
Vector:	pCMV6-Entry (PS100001)
E. coli Selection:	Kanamycin (25 ug/mL)



[View online »](#)

ORF Nucleotide Sequence:

>MR207296 ORF sequence
 Red=Cloning site Blue=ORF Green=Tags(s)

TTTTGTAATACGACTCACTATAGGGCGGCCGGGAATTCGTGCGACTGGATCCGGTACCGAGGAGATCTGCC
 GCC**CGGATCGCC**

ATGCCTCACAACTCGATCAGATCCGGCCATGGAGGGCTGAATCAACTAGGAGGGGCTTTGTGAATGGCA
 GGCTCTGCCAGAAGTTGTACGTCAACGCATTGTGGACTTGGCCACCAGGGCGTGAGGCCCTGTGATAT
 TTCTCGCCAGCTCCGTGTGAGCCATGGCTGTGTAAAGCAAGATCCTTGGCAGGTAACGAGACTGGCAGC
 ATCCGGCTGGAGTGATAGGGGGCTCCAAGCCCAAGGTGGCCACCCCAAGGTGGTGGAGAAGATAGGAG
 ACTACAAGCGGCAGAACCCTACCATGTTTGCTTGGGAGATCCGGGACCGGCTCCTGGCAGAAGGCGTTTG
 TGACAATGACTGTCCCAGTGTGAGTCCATCAACAGAATCATCCGGACCAAAGTGCAGCAGCCATTC
 AACCTCCCATGGATAGCTGTGTGGCCACCAAGTCTCTGAGCCAGGACACACTGATCCCAGCTCAG
 CTGTAACACCCCAAGTACCCAGTCGGATTCTTGGGCTCTACCTACTCTATCAACGGGCTCCTAGG
 AATTGCTCAGCCTGGCAATGACAACAAGAGAAAGATGGATGATAGTGACCAGGACAGCTGTCGGCTAAGC
 ATCGACTCACAGAGCAGCAGCAGTGGTCCCTCGAAAGCACCTTCGTACGGACACCTTCAGCCAGCACCATC
 TCGAGGCCCTTGAGTGCCCGTTTGAGCGGCAGCATTACCCGGAGGCCATGCCTCCCCAGCCACACCAA
 AGGGGAGCAGGGGCTGTACCCACTGCCCTTACTCAACAGTGCCCTGGATGATGGGAAGGCCACCCTGACA
 TCTTCCAATACACCTCTGGGACGCAACCTCTCGACTCACCAGACCTACCTGTGGTGGCAGATCCTCATT
 CACCCTTCGCCATAAAGCAGGAAACCCAGAGCTCTCCAGTTCTAGTCCACCCCTTCTCTTTATCTAG
 CTCCGCCTTTTGGATCTGCAGCAAGTCGGCTCTGGGGCCAGCAGGTGCCCTCGGTCCCACCCCTCAAT
 GCCTTTCCCATGCTGCCTCCGTGTATGGGCAGTTCACGGGCCAGGCCCTCCTCTCAGGGCGAGAGATGG
 TGGGGCCACGCTGCCTGGATACCCACCCACATCCCCACCAAGTGGACAGGGCAGCTATGCCTCTTCTGC
 TATCGCAGGCATGGTGGCAGGAAGTGAATATTCTGGCAATGCCTACAGCCACACCCCGTATTCTCTTAC
 AGTGAGGCTGGCGCTTCCCAACTCCAGCCTGCTGAGTTCTCCATATTATTACAGCTCTACATCAAGGC
 CAAGCGCACCCACCTCTGCCACAGCCTTGACCATCTG

ACGCGTACGCGGCCGCTCGAGCAGAACTCATCTCAGAAGAGGATCTGGCAGCAAATGATATCCTGGATT
 ACAAGGATGACGACGATAAGGTTTAA

Protein Sequence:

>MR207296 protein sequence
 Red=Cloning site Green=Tags(s)

MPHNSIRSGHGLNQLGGAFVNGRPLPEVVRQRIVDLAHQGVVPCDISRQLRVSHGCVSKILGRYYETGS
 IRPGVIGGSKPKVATPKVVEKIGDYKRQNPMTFAWEIRDRLLAEGVCDNDTVPSVSSINRIIRTKVQPPF
 NLPMDSCVATKSLSPGHTLIPSSAVTPPESPQSDSLGSTYSINGLLGIAQPGNDNKRKMDSDQDSCRLS
 IDSQSSSSGPRKHLRTDFSQHHLEALECFERQHYPEAYASPSHTKGEQLYPLLLNSALDDGKATLT
 SSNTPLGRNLSTHQYTPVVADPHSPFAIKQETPELSSSSSTPSSLSSAFDLQVQVSGGPAGASVPPFN
 AFPHAASVYQGFTGQALLSGREMGPTLPGYPPHPTSGQGSYASSAIAGMVAGSEYSGNAYSHTPYSSY
 SEAWRFPNSSLLSPPYYSSSTRPSAPPTSATAFDHL

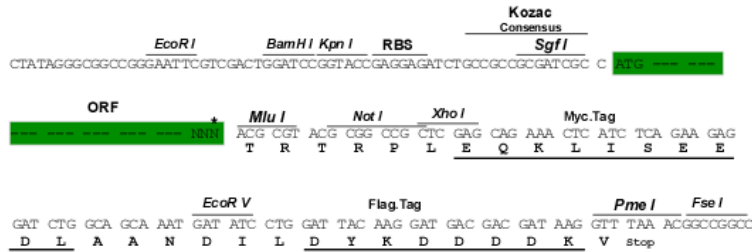
TRTRPLEQKLISEEDLAANDILDYKDDDDKV

Restriction Sites:

Sgfl-MluI

Cloning Scheme:

Cloning sites used for ORF Shutting:



* The last codon before the Stop codon of the ORF

ACCN: NM_011040

ORF Size: 1374 bp

OTI Disclaimer: The molecular sequence of this clone aligns with the gene accession number as a point of reference only. However, individual transcript sequences of the same gene can differ through naturally occurring variations (e.g. polymorphisms), each with its own valid existence. This clone is substantially in agreement with the reference, but a complete review of all prevailing variants is recommended prior to use. [More info](#)

OTI Annotation: This clone was engineered to express the complete ORF with an expression tag. Expression varies depending on the nature of the gene.

Components: The ORF clone is ion-exchange column purified and shipped in a 2D barcoded Matrix tube containing 10ug of transfection-ready, dried plasmid DNA (reconstitute with 100 ul of water).

Reconstitution Method:

1. Centrifuge at 5,000xg for 5min.
2. Carefully open the tube and add 100ul of sterile water to dissolve the DNA.
3. Close the tube and incubate for 10 minutes at room temperature.
4. Briefly vortex the tube and then do a quick spin (less than 5000xg) to concentrate the liquid at the bottom.
5. Store the suspended plasmid at -20°C. The DNA is stable for at least one year from date of shipping when stored at -20°C.

RefSeq: [NM_011040.4](#)
RefSeq Size: 2569 bp

RefSeq ORF: 1374 bp

Locus ID: 18510

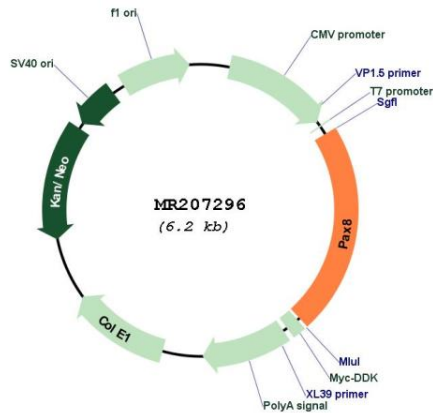
UniProt ID: [Q00288](#)

Cytogenetics: 2 16.43 cM

MW: 48.8 kDa

Gene Summary: This gene encodes a member of a family of transcription factors that contain a characteristic N-terminal paired DNA-binding domain. The encoded protein is important for proper differentiation of the thyroid and the kidney. Alternatively spliced transcript variants of this gene have been described, but their full-length nature is not known. [provided by RefSeq, Mar 2013]

Product images:



Circular map for MR207296