

Product datasheet for **MR207283**

Pla1a (NM_134102) Mouse Tagged ORF Clone

Product data:

Product Type:	Expression Plasmids
Product Name:	Pla1a (NM_134102) Mouse Tagged ORF Clone
Tag:	Myc-DDK
Symbol:	Pla1a
Synonyms:	AA986889; Ps-pla1; Pspla1
Mammalian Cell Selection:	Neomycin
Vector:	pCMV6-Entry (PS100001)
E. coli Selection:	Kanamycin (25 ug/mL)



[View online »](#)

ORF Nucleotide Sequence:

>MR207283 ORF sequence
 Red=Cloning site Blue=ORF Green=Tags(s)

TTTTGTAATACGACTCACTATAGGGCGGCCGGAATTCGTCGACTGGATCCGGTACCGAGGAGATCTGCC
 GCC**CGGATCGCC**

ATGCGTCTGGCCTCTGGGAGACATGCTTCTGGTTGTGGGGACCACTTTTATGGCTCAGCATTGGAAGTT
 CAGGGAACGTACCCCTACCACCAACCAAGTGCACGGACTTTCAGAGTGCCAACCTCCTCCGAGGCAC
 CAACCTCAAGGTGCAGTTTCTCCTCTTTACCCCTCGGACCCAGCTGTGGGCAGCTAGTAGAAGAAGGC
 AGTGACATCCGGAGCTCTGAGTTCAACGCCAGTCTGAGAACAAAGTAATTATTCATGGATTGAGGGCGC
 TCGGAACAAAGCCTTCTGGATCGACAAGTTTATCAGCGCTGTCTGCGGGCTGCGGATGCTAATGTAAT
 CGCGGTGGACTGGGTTTATGGTTCTACGGCGTGTACTACTCAGCAGTGGAGAATGTGGTCAAGCTGAGC
 CTGGAGATCTCCGTTTCTCAGCAAACCTTTGGAGCTGGGCGTGTGAGAGTCTCAATCCACATCATTG
 GTGTCAGTCTGGGGCTCATGTTGGAGGCATGGTGGGACATTTCTACAAAGGCCAGTTGGGACAGATCAC
 AGGTCTGGATCCTGCTGGACCAGAGTACACCAGAGCCAGCTGGAGGAACGCTTGGATGCTGGAGACGCC
 CTGTTTGTAGAAGCCATCCACACAGACAGGACAATTTGGGTATCCGGATTCCTGTTGGACATGTGGACT
 ACTTTGTCAATGGAGGCCAAGACCAGCCTGGATGCCCTGCCTTCTTTCACGCAGGTTACAATTACTTGAT
 CTGTGATCACATGAGGGCAGTACACCTCTACATCAGTGCCTGGAGAACCTGCCCACTGATGGCCTTC
 CCCTGTGCCAGCTACAAGGCCTTCTCGCAGGAGACTGTCTGGATTGCTTTAACCCCTTCTGCTCTCCT
 GTCCGAGGATTGGACTGGTGAACGAGGTGGTGTGATGATTGAGCCGCTCCCAAGGAAGTGAAGGTTTA
 TCTCCTGACTACATCCAGTGCCCGTACTGTGTGCCACACAGCCTTGTGGAGTTTATTTGAAGGAGAAG
 AGAAAAAGGATACCAGCATCGAGTACGTTTCTTAGCAACAACGTAACTCCTCGGTCAAGATCACCA
 TACCTAACAGCAACTGGAAGGGAGAGGGTCTATGGCTCATCTAACCCACAGTCCAGATCAACCAAGT
 GAAGCTCAAGTTCCAAGTTTCTAGCCGGTTTGGAGAAAAGACAGAAGTCTGTTGTTGGGACTTCTGT
 ACTGCCCTCTGCCGTCATGACAGCAAGAAGACGGTCTGCATACCTGAGCCAGTGCCTGCAAGCAG
 GCGTGCCTGCTTCCAGGACCTGAAAATAGCCTGCGTG

ACGCGTACGCGGCCGCTCGAGCAGAACTCATCTCAGAAGAGGATCTGGCAGCAAATGATATCCTGGATT
 ACAAGGATGACGACGATAAGGTTTAA

Protein Sequence:

>MR207283 protein sequence
 Red=Cloning site Green=Tags(s)

MRPGLWETCFWLWGPLLWLSIGSSGNVPPTTPKCTDFQSANLLRGTNLKVQFLFTPSPSCGQLVEEG
 SDIRSEFNASLRKVI IHGFRALGKPSWIDKFI SAVLRAADANVIAVDWVYGSTGVVYSAVENNVKLS
 LEISRFLSKLLELGVSESSIHIIGVSLGAHVGGMVGHFYKGLGQITGLDPAGPEYTRASLEERLDAGDA
 LFVEAIIHTDNDLIRIPVGHVDYFVNGGQDQPGCPAFFHAGYNYLICDHMRVHLYISALENTCPLMAF
 PCASYKAFLAGDCLDCFNPFLSCPRIGLVERGGVMIEPLPKEVKVYLLTTSSAPYCVHHSLEFYLKEK
 RKKDTSIEVTFLSNNVTSSVKITIPKQLEGRGVMHPNPQCQINQVKLKFQVSSRVWRKDRTPVVGTF
 TAPLPVNSKKTVCIPVRLQAGVPAFQDLKIACV

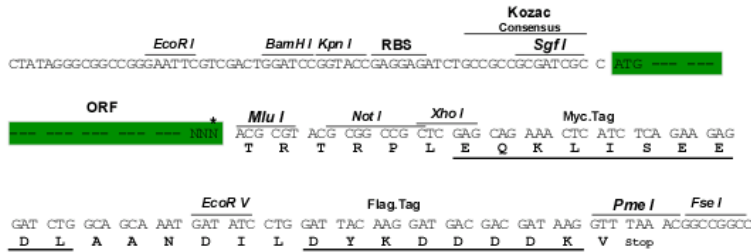
TRTRPLEQKLISEEDLAANDILDYKDDDDKV

Restriction Sites:

SgfI-MluI

Cloning Scheme:

Cloning sites used for ORF Shutting:



* The last codon before the Stop codon of the ORF

ACCN: NM_134102

ORF Size: 1371 bp

OTI Disclaimer: The molecular sequence of this clone aligns with the gene accession number as a point of reference only. However, individual transcript sequences of the same gene can differ through naturally occurring variations (e.g. polymorphisms), each with its own valid existence. This clone is substantially in agreement with the reference, but a complete review of all prevailing variants is recommended prior to use. [More info](#)

OTI Annotation: This clone was engineered to express the complete ORF with an expression tag. Expression varies depending on the nature of the gene.

Components: The ORF clone is ion-exchange column purified and shipped in a 2D barcoded Matrix tube containing 10ug of transfection-ready, dried plasmid DNA (reconstitute with 100 ul of water).

Reconstitution Method:

1. Centrifuge at 5,000xg for 5min.
2. Carefully open the tube and add 100ul of sterile water to dissolve the DNA.
3. Close the tube and incubate for 10 minutes at room temperature.
4. Briefly vortex the tube and then do a quick spin (less than 5000xg) to concentrate the liquid at the bottom.
5. Store the suspended plasmid at -20°C. The DNA is stable for at least one year from date of shipping when stored at -20°C.

RefSeq: [NM_134102.1](#)
RefSeq Size: 1994 bp

RefSeq ORF: 1371 bp

Locus ID: 85031

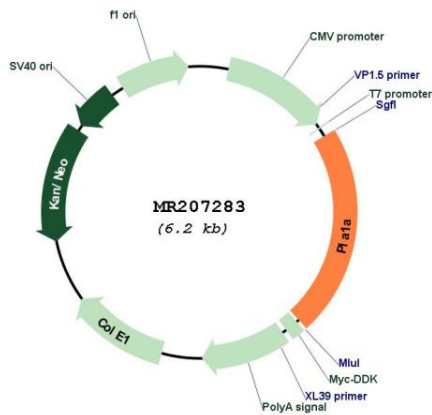
UniProt ID: [Q8VI78](#)

Cytogenetics: 16 26.83 cM

MW: 50.1 kDa

Gene Summary: Hydrolyzes the ester bond at the sn-1 position of glycerophospholipids and produces 2-acyl lysophospholipids. Hydrolyzes phosphatidylserine (PS) in the form of liposomes and 1-acyl-2 lysophosphatidylserine (lyso-PS), but not triolein, phosphatidylcholine (PC), phosphatidylethanolamine (PE), phosphatidic acid (PA) or phosphatidylinositol (PI). Hydrolysis of lyso-PS in peritoneal mast cells activated by receptors for IgE leads to stimulate histamine production (By similarity).[UniProtKB/Swiss-Prot Function]

Product images:



Circular map for MR207283