

Product datasheet for **MR207238**

Serinc1 (NM_019760) Mouse Tagged ORF Clone

Product data:

Product Type:	Expression Plasmids
Product Name:	Serinc1 (NM_019760) Mouse Tagged ORF Clone
Tag:	Myc-DDK
Symbol:	Serinc1
Synonyms:	1500011D18Rik; AI315070; AIGP-2; mKIAA1253; Tde1l; Tde2; TMS-2; Tms2
Mammalian Cell Selection:	Neomycin
Vector:	pCMV6-Entry (PS100001)
E. coli Selection:	Kanamycin (25 ug/mL)



[View online »](#)

ORF Nucleotide Sequence:

>MR207238 representing NM_019760
 Red=Cloning site Blue=ORF Green=Tags(s)

TTTTGTAATACGACTCACTATAGGGCGGCCGGAATTCGTCGACTGGATCCGGTACCGAGGAGATCTGCC
 GCC**CGGATCGCC**

ATGGGGAGCGTTCTGGGCTGTGCTCCGTGGCGAGCTGGATTCCGTGTTTGTGTGGCAGTGCCCCGTGTT
 TGCTGTGCCGATGCTGCCCCAGTGGGAACAACCTCACTGTGACTAGATTGATCTACGCACCTTTCTTGCT
 CGTCGGAGTATGTGTAGCTTGTGTAATGTAATACCAGGAATGGAAGAACAACCTGAATAAGATTCCTGGG
 TTCTGTGAGAATGAGAAAGGTGTTGTTCCCTGTAATATCCTGGTTGGCTACAAAGCTGTGTATCGCCTGT
 GCTTTGGTTTGGCCATGTTCTATCTTCTCCTCTTTACTAATGATCAAGGTAAGGAGCAGCAGTGACCC
 TAGAGCGGCAGTCCACAATGGATTCTGGTTCTTTAAATTTGCTACAGCAGTTGCAATTATCATTGGCGCA
 TTCTTCATCCCAGAAGGCACTTTACAACGTGTGGTTTTATGTAGGCATGGCGGGCGCCTTTTGTTCAT
 TCCTTATAACAAGTCTTACTTATTGATTTTGGCCATTCTTGAATGAATCGTGGGTTGAAAAATGGA
 AGAAGGGAACCAAGATGTTGGTATGCAGCCCTACTGTACAGCTACAGCTCTGAATTACTTGTCTTTA
 GTTGCCGTGCTGCTATTCTTTGTCTACTACACTACCCAGCCAGCTGTGCAGAGAACAAGGCGTTATCA
 GTGTCAACATGCTCCTCTGCATTGGCGCCTCAGTAATGTCCATTCTGCCAAGATCCAGGAATCACAAAC
 AAGGTCTGGCTTGTACAGTCGTACAGTAATTACAGTCTACACAATGATTTGACATGGTCTGCTATGACC
 AATGAACCAGAAACAATGCAATCCAAGTCTACTGAGCATCATTGGCTCAATACCACAAGGCCTATTC
 CAAAGGACGGGCAGTCTGTTCAAGTGGTGGCAGTCAAGGAATTATAGGACTTGTCTTTTCTGCTGTG
 TGTGTTTTATTGAGCATCCGTACCTCCAACAACAGTCAGGTTAATAAGCTGACTCTAACAAGTATGAG
 TCAACATTGATAGAGGATGGGAATGGCAGAAGTACAGGATCACTAGATGATGGTATGGCATCCACCGAG
 CTGTAGATAACGAGAGGGATGGAGTACAGTACTCCTTTCACTTCTTCTGCTCTTCTTGGCTTC
 ACTTTACATCATGATGACCCCTACCAATTGGTACAGGTATGAGCCTTCTCGTGAGATGAAAAGTCAGTGG
 ACAGCAGTCTGGGTGAAAATCTCTCCAGTTGGATTGGCCTTGTGCTGTACGTGTGGACACTAGTGGCAC
 CACTTGTCTTACAAATCGGATTTTGAC

ACGCGTACGCGGCCGCTCGAGCAGAACTCATCTCAGAAGAGGATCTGGCAGCAAATGATATCCTGGATT
 ACAAGGATGACGACGATAAGGTTTAA

Protein Sequence:

>MR207238 representing NM_019760
 Red=Cloning site Green=Tags(s)

MGSVLGLCSVASWIPCLCGSAPCLLCRCCPSGNNSTVTRLIYALFLLVGVCVACVMLIPGMEEQLNKIPG
 FCENEKGVVPCNILVGYKAVYRLCFGLAMFYLLSLLMIKVKSSSDPRAAVHNGFWFFKFATAVAIIIGA
 FFIPGTFFTTVWFYVGMAGAFCFILIQVLVLLIDFAHSWNE SWVEKMEEGNSRCWYAALLSATALNYLLSL
 VAVVLFVYVYTHPASCAENKAFISVNMMLLCIGASVMSILPKIQESQPRSGLLQSSVITVYTMYL TWSAMT
 NEPETNCNPSLLSIIGFNTTRPIPKDQSVQWHPQGIIGLVLFLLCVFYSSIRTSNNSQVKNLTLTSD
 STLIEDNGRSDGSLDDGDGIHRAVDNERDGVYYSFFHFMLFLASLYIMMTL TNWRYEPSREMKSQW
 TAVVWKISSSWIGLVLYVWTLVAPLVLTNRDFD

TRTRPLEQKLISEEDLAANDILDYKDDDDKV

Chromatograms:

https://cdn.origene.com/chromatograms/mm9017_e07.zip

Restriction Sites:

Sgfl-MluI

Cloning Scheme:


ACCN: NM_019760

ORF Size: 1359 bp

OTI Disclaimer: The molecular sequence of this clone aligns with the gene accession number as a point of reference only. However, individual transcript sequences of the same gene can differ through naturally occurring variations (e.g. polymorphisms), each with its own valid existence. This clone is substantially in agreement with the reference, but a complete review of all prevailing variants is recommended prior to use. [More info](#)

OTI Annotation: This clone was engineered to express the complete ORF with an expression tag. Expression varies depending on the nature of the gene.

Components: The ORF clone is ion-exchange column purified and shipped in a 2D barcoded Matrix tube containing 10ug of transfection-ready, dried plasmid DNA (reconstitute with 100 ul of water).

- Reconstitution Method:**
1. Centrifuge at 5,000xg for 5min.
 2. Carefully open the tube and add 100ul of sterile water to dissolve the DNA.
 3. Close the tube and incubate for 10 minutes at room temperature.
 4. Briefly vortex the tube and then do a quick spin (less than 5000xg) to concentrate the liquid at the bottom.
 5. Store the suspended plasmid at -20°C. The DNA is stable for at least one year from date of shipping when stored at -20°C.

RefSeq: [NM_019760.3](#), [NP_062734.1](#)

RefSeq Size: 2889 bp

RefSeq ORF: 1362 bp

Locus ID: 56442

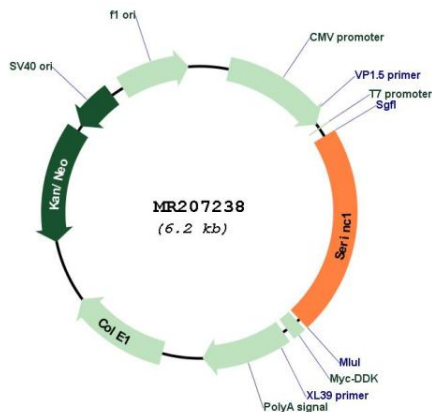
UniProt ID: [Q9QZ18](#)

Cytogenetics: 10 B4

MW: 51 kDa

Gene Summary: Enhances the incorporation of serine into phosphatidylserine and sphingolipids.
[UniProtKB/Swiss-Prot Function]

Product images:



Circular map for MR207238