

Product datasheet for **MR207184**

Serinc2 (NM_172702) Mouse Tagged ORF Clone

Product data:

Product Type:	Expression Plasmids
Product Name:	Serinc2 (NM_172702) Mouse Tagged ORF Clone
Tag:	Myc-DDK
Symbol:	Serinc2
Synonyms:	2310004K20Rik; AW121759; FKSG84; TDE2; Tde2l
Mammalian Cell Selection:	Neomycin
Vector:	pCMV6-Entry (PS100001)
E. coli Selection:	Kanamycin (25 ug/mL)



[View online »](#)

ORF Nucleotide Sequence:

>MR207184 ORF sequence
 Red=Cloning site Blue=ORF Green=Tags(s)

TTTTGTAATACGACTCACTATAGGGCGGCCGGGAATTCGTCGACTGGATCCGGTACCGAGGAGATCTGCC
 GCC**CGGATCGCC**

ATGGGGCCTGTCTCGGGCCTGCTCCCTGCTCAGCTGCGCATCCTGCCTCTGCGGCTCTGCACCCTGCA
 TCCTATGTGGCTGTTGCCCTCAACCCGCAACTCCACGGTGAGCCGCCTCCTCTTACCAGCTTCCTCTT
 CTTGGGGGTGCTGGTGTCCATCATCATGCTGAGCCGGGAGTGGAGAGTCACTTTACAAGCTGCCCTGG
 GTGTGTGAGGACAGAACCAGCAACCCCTGGTCTGCAGGGGCCCTGGATTGCGGCTCCCTGCTGGGTT
 TCCGCGTGTCTACCGTATGTGCTTGGCCAGCAGCCTTTTTCTTCTTCTCATGCTGTTAATGATCTG
 TGTCCGAGTAGCCGGACCCGCGAGCAGCCATCCAGAACGGTTTTGGTTTTTAAATTCCTGATCCTT
 GTGGGTACTACTGTGGGCGCCTTCTACATCCCTGATGGCTCCTTCCCAAGATCTGGTCTACTTTGGCG
 TCGTGGGCTCCTCCTCTTCATCCTCATCCAGTGATCCTGTTTGTGACTTTGCCACTCCTGGAATCA
 GCGGTGGCTGTGAAGGCCGAGGAGTGTACTCTCCAGCCTGGTACGCAGGCCTTTTCTTCTCACCTTC
 CTCTTCTACCTGTTGCCATCGCTGCTGTGGCACTGATGTTGCTCTACTACACGGAGTCTGGTGCCTGCC
 ATGAGGGCAAGGTCTTATCAGCCTCAATCTCACCTTCTGTGTCTGCGTCTCCATCATTGCTGTCCTGCC
 CAAGGTCCAGGATGCTCAGCCAACTCGGGTCTGCTGCAAGCCTCCGTCATAACCTTGTATAACAATGTTT
 GTCACCTGGTCTGCCCTATCCAACGTCCCTGACCAAAAATGCAACCCTCACCTGCCCACTAAAAATGGAA
 CAGGCCAGGTGGACTTGGAGGACTACAGCACGGTGTGGTGGGATGCCCGAGCATTGTGGGCTCGTCAT
 CTTATCCTGTGCACCTTCTTATTAGCCTGCGATCCTCTGACCACCGTCAGGTGAACAGCCTGATGCAG
 ACAGAGGAGTGTCCGGCAGAGATGGTGCAGCAGCAGCAGGTGGCCGTAGTGGCAGAGCCTATGACA
 ATGAGCAGGATGGTGTACCTACAGTACTCCTTCTTCCACTTCTGCCTGGTGTGCTGCCTCCCTCATGT
 CATGATGACGCTTACCAACTGGTACAGCCTGGAGAGACCCGGAAGATGATCAGCACTTGGACCTCAGTG
 TGGGTGAAGATCTGTCCAGCTGGGCGGGCTGTTCTCTACCTGTGGACCCTAGTGGCACCCCTGCTCC
 TGCCCAACAGAGACTTCAGC

ACGCGTACGCGGCCGCTCGAGCAGAACTCATCTCAGAAGAGGATCTGGCAGCAAATGATATCCTGGATT
 ACAAGGATGACGACGATAAGGTTTAA

Protein Sequence:

>MR207184 protein sequence
 Red=Cloning site Green=Tags(s)

MGACLGACSLLSASCSCGSAAPCILCGCCPSTRNSTVSRLLFTSFLFLGVLVSIIMLSPGVESQLYKLPW
 VCEDRTQQPLVLQGPLDCGSLGFRAYVRMCFATAAFFFFMLLMICVRSSRDPRAAIQNGFWFFKFLIL
 VGITVGFYIPDGSFPKIWFYFVVGVSFLFILIQLILFVDFAHSWNQRLCKAEEDCSPAWYAGLFFFTF
 LFYLLSIAAVALMFVYYTESGACHEGKVFISLNLTFVCVSIIVLAVLPKVQDAQPNSGLLQASVITLYTMF
 VTWSALSNVPDQKCNPHLPTKNGTGQVDLEDYSTVWWDAPSIVGLVIFILCTFFISLRSSDHRQVNSLMQ
 TEECPAEMVQQQVAVSDGRAYDNEQDGVTSYSFFHFCLVLASLHVMMTLTNWYSPGETRKMISTWTSV
 WVKICASWAGLFLYLWTLVAPLLLPNRDFS

TRTRPLEQKLISEEDLAANDILDYKDDDDKV

Restriction Sites:

SgfI-MluI

Cloning Scheme:


ACCN: NM_172702

ORF Size: 1353 bp

OTI Disclaimer: The molecular sequence of this clone aligns with the gene accession number as a point of reference only. However, individual transcript sequences of the same gene can differ through naturally occurring variations (e.g. polymorphisms), each with its own valid existence. This clone is substantially in agreement with the reference, but a complete review of all prevailing variants is recommended prior to use. [More info](#)

OTI Annotation: This clone was engineered to express the complete ORF with an expression tag. Expression varies depending on the nature of the gene.

Components: The ORF clone is ion-exchange column purified and shipped in a 2D barcoded Matrix tube containing 10ug of transfection-ready, dried plasmid DNA (reconstitute with 100 ul of water).

Reconstitution Method:

1. Centrifuge at 5,000xg for 5min.
2. Carefully open the tube and add 100ul of sterile water to dissolve the DNA.
3. Close the tube and incubate for 10 minutes at room temperature.
4. Briefly vortex the tube and then do a quick spin (less than 5000xg) to concentrate the liquid at the bottom.
5. Store the suspended plasmid at -20°C. The DNA is stable for at least one year from date of shipping when stored at -20°C.

RefSeq: [NM_172702.3](#), [NP_766290.2](#)

RefSeq Size: 1892 bp

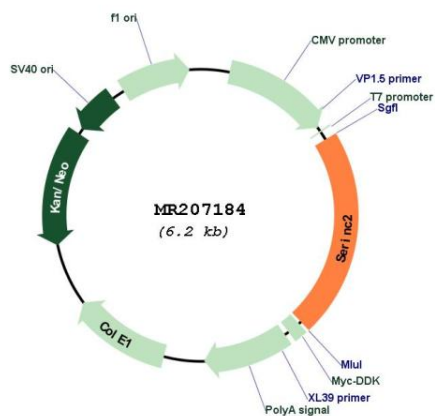
RefSeq ORF: 1353 bp

Locus ID: 230779

UniProt ID: [Q8K0E7](#)

Cytogenetics: 4 D2.2
 MW: 50.5 kDa

Product images:



Circular map for MR207184