

Product datasheet for **MR207167**

Tuba1c (BC022182) Mouse Tagged ORF Clone

Product data:

Product Type:	Expression Plasmids
Product Name:	Tuba1c (BC022182) Mouse Tagged ORF Clone
Tag:	Myc-DDK
Symbol:	Tuba1c
Synonyms:	M[a]6; Tuba6
Mammalian Cell Selection:	Neomycin
Vector:	pCMV6-Entry (PS100001)
E. coli Selection:	Kanamycin (25 ug/mL)



[View online »](#)

ORF Nucleotide Sequence:

>MR207167 ORF sequence
 Red=Cloning site Blue=ORF Green=Tags(s)

TTTTGTAATACGACTCACTATAGGGCGGCCGGAATTCGTCGACTGGATCCGGTACCGAGGAGATCTGCC
 GCC**CGGATCGCC**

ATGCGTGAGTGCATCTCCATCCACGTTGGCCAGGCTGGTTCAGATCGGCAATGCCTGCTGGGAGCTCT
 ACTGCCTGGAACATGGCATCCAGCCTGATGGCCAGATGCCAAGTGACAAGACCATTGGGGGAGGAGATGA
 CTCTTCAACACCTTCTTCAGTGAGACAGGAGCTGGCAAGCATGTGCCCCGGGCAGTGTTTGTAGACCTG
 GAACCCACGGTCAATCGATGAAGTTCGCACTGGCACCTACCGCCAGCTCTCCACCCTGAGCAGCTCATCA
 CAGGCAAGGAGGATGCTGCCAATAACTATGCCCGTGGCCACTACACCATTGGCAAGGAGATCATTGACCT
 TGTCTGGACAGGATTCGCAAGCTGGCTGACCAGTGCACGGGTCTCCAGGGCTTCTTGGTTTTCCACAGC
 TTTGGCGGGGAACTGGCTCTGGCTTACCTCCCTGCTGATGGAGCGGCTCTCTGTGGATTACGAAAGA
 AGTCCAAGCTGGAGTTCTCCATTTACCCAGCCCCCAGGTTTCCACTGCTGTGGTTGAGCCCTACAATTC
 CATCTCACCCACACCACCCTGGAGCACTCTGATTGTGCCTTCATGGTAGACAATGAGGCCATCTAT
 GACATCTGTCGTAGAAACCTCGACATTGAGCGCCAACCTACACCAACCTTAACCGCCTTATTAGCCAGA
 TTGTGTCTTCCATCACTGCTTCCCTCAGATTTGATGGGGCCCTGAATGTTGATCTGACAGAATCCAGAC
 CAACCTGGTACCCTATCCTCGCATCCACTTCCCTCTGGCCACTTATGCCCTGTCATCTCTGCTGAGAAA
 GCCTACCACGAGCAGCTTACAGTAGCAGAGATCAACATGCCTGCTTTGAGCCAGCCAACCATGAGTGA
 AATGTGACCCTCGCCATGGTAAATACATGGCTTGTGCTGCTGTACCGTGGTGTGTTCCCAAAGA
 TGTCAATGCTGCCATTGCCACCAACAGACCAAGCGTACCATCCAGTTTGTGGACTGGTCCCCACTGGC
 TTCAAGTTGGCATTAACTACCAGCCTCCACTGTGGTACCCGGTGGTACCTGGCCAAGGTGCAGAGAG
 CTGTGTGCATGCTGAGCAACACCACAGCCATTGCTGAGGCTGGGCTCGCCTAGATCACAAGTTTGATCT
 GATGTATGCCAAGCGTGCCTTTGTGCACTGGTATGTGGGTGAGGGCATGGAGGAGGGTGAATTTCTGAG
 GCCCGTAGGACATGGCTGCCCTAGAGAAGGATTATGAGGAGGTTGGGGCAGATAGTCTGAAGGAGACG
 ATGAGGGTGAGGAATAT

ACGCGTACGCGGCCGCTCGAGCAGAACTCATCTCAGAAGAGGATCTGGCAGCAAATGATATCCTGGATT
 ACAAGGATGACGACGATAAGGTTTAA

Protein Sequence:

>MR207167 protein sequence
 Red=Cloning site Green=Tags(s)

MRECISIHVQAGVQIGNACWELYLEHGIQPDGQMPQSDKTIGGGDDSFNTFFSETGAGKHVPRAVFVDL
 EPTVIDEVRTGTYRQLFHPEQLITGKEDAANNYARGHYTIGKEIDLVLDRIRKLADQCTGLQGLVHFS
 FGGGTGSGFTSLLMERLSVDYGGKSKLEFSIYPAPQVSTAVVEPYNSILTTHTTLEHSDCAFMDNEAIY
 DICRRNLDIERPTYTNLNRLLISQIVSSITASLRFDGALNVDLTEFQTNLVPYPRIFPLATYAPVISA
 AYHEQLTVAEITNACFEPANQMVKCDPRHGKYMCCLLYRGDVVPKDVNAAIATIKTKRTIQFVDWCPTG
 FKVGINYQPPTVVPGGDLAKVQRAVCMLSNNTAIAEAWARLDHKFDLMYAKRAFVHWYVGEEMEEGEFSE
 AREDMAALEKDYEEVGADSAEGDDEGEEY

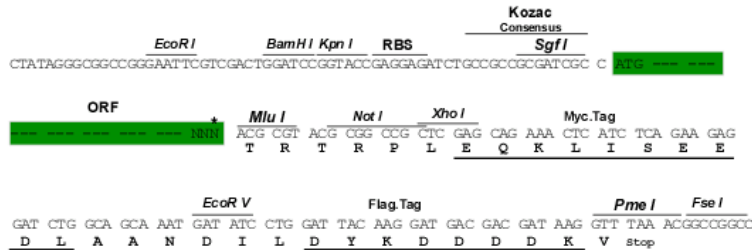
TRTRPLEQKLISEEDLAANDILDYKDDDDKV

Restriction Sites:

Sgfl-Mlul

Cloning Scheme:

Cloning sites used for ORF Shutting:



* The last codon before the Stop codon of the ORF

ACCN: BC022182

ORF Size: 1347 bp

OTI Disclaimer: The molecular sequence of this clone aligns with the gene accession number as a point of reference only. However, individual transcript sequences of the same gene can differ through naturally occurring variations (e.g. polymorphisms), each with its own valid existence. This clone is substantially in agreement with the reference, but a complete review of all prevailing variants is recommended prior to use. [More info](#)

OTI Annotation: This clone was engineered to express the complete ORF with an expression tag. Expression varies depending on the nature of the gene.

Components: The ORF clone is ion-exchange column purified and shipped in a 2D barcoded Matrix tube containing 10ug of transfection-ready, dried plasmid DNA (reconstitute with 100 ul of water).

Reconstitution Method:

1. Centrifuge at 5,000xg for 5min.
2. Carefully open the tube and add 100ul of sterile water to dissolve the DNA.
3. Close the tube and incubate for 10 minutes at room temperature.
4. Briefly vortex the tube and then do a quick spin (less than 5000xg) to concentrate the liquid at the bottom.
5. Store the suspended plasmid at -20°C. The DNA is stable for at least one year from date of shipping when stored at -20°C.

RefSeq: [BC022182](#), [AAH22182](#)
RefSeq Size: 1674 bp

RefSeq ORF: 1349 bp

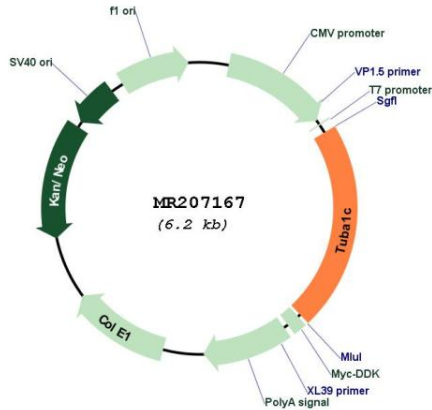
Locus ID: 22146

Cytogenetics: 15 F1

MW: 49.9 kDa

Gene Summary: Tubulin is the major constituent of microtubules. It binds two moles of GTP, one at an exchangeable site on the beta chain and one at a non-exchangeable site on the alpha chain. [UniProtKB/Swiss-Prot Function]

Product images:



Circular map for MR207167