

Product datasheet for MR207148L3

Clu (NM_013492) Mouse Tagged Lenti ORF Clone

Product data:

Product Type:	Expression Plasmids
Product Name:	Clu (NM_013492) Mouse Tagged Lenti ORF Clone
Tag:	Myc-DDK
Symbol:	Clu
Synonyms:	A; A1893575; Apoj; C; Cli; D14Ucl; D14Ucla3; Sg; Sgp; Sgp-2; Sgp2; SP-; SP-40; Sugp; Sugp-2
Mammalian Cell Selection:	Puromycin
Vector:	pLenti-C-Myc-DDK-P2A-Puro (PS100092)
E. coli Selection:	Chloramphenicol (34 ug/mL)
ORF Nucleotide Sequence:	The ORF insert of this clone is exactly the same as(MR207148).
Restriction Sites:	SgfI-MluI
Cloning Scheme:	

Cloning sites used for ORF Shuttling:



* The last codon before the Stop codon of the ORF.

ACCN:	NM_013492
ORF Size:	1347 bp



[View online »](#)

OTI Disclaimer: Due to the inherent nature of this plasmid, standard methods to replicate additional amounts of DNA in E. coli are highly likely to result in mutations and/or rearrangements. Therefore, OriGene does not guarantee the capability to replicate this plasmid DNA. Additional amounts of DNA can be purchased from OriGene with batch-specific, full-sequence verification at a reduced cost. Please contact our customer care team at custsupport@origene.com or by calling 301.340.3188 option 3 for pricing and delivery.

The molecular sequence of this clone aligns with the gene accession number as a point of reference only. However, individual transcript sequences of the same gene can differ through naturally occurring variations (e.g. polymorphisms), each with its own valid existence. This clone is substantially in agreement with the reference, but a complete review of all prevailing variants is recommended prior to use. [More info](#)

OTI Annotation: This clone was engineered to express the complete ORF with an expression tag. Expression varies depending on the nature of the gene.

Components: The ORF clone is ion-exchange column purified and shipped in a 2D barcoded Matrix tube containing 10ug of transfection-ready, dried plasmid DNA (reconstitute with 100 ul of water).

Reconstitution Method:

1. Centrifuge at 5,000xg for 5min.
2. Carefully open the tube and add 100ul of sterile water to dissolve the DNA.
3. Close the tube and incubate for 10 minutes at room temperature.
4. Briefly vortex the tube and then do a quick spin (less than 5000xg) to concentrate the liquid at the bottom.
5. Store the suspended plasmid at -20°C. The DNA is stable for at least one year from date of shipping when stored at -20°C.

RefSeq: [NM_013492.1](#)

RefSeq Size: 1808 bp

RefSeq ORF: 1347 bp

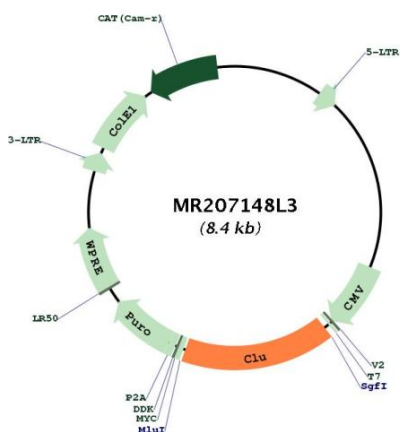
Locus ID: 12759

UniProt ID: [Q06890](#)

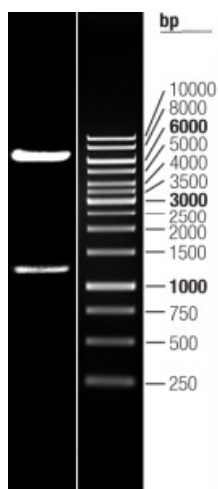
Cytogenetics: 14 34.36 cM

Gene Summary: The protein encoded by this gene is a secreted chaperone that can, under some stress conditions, also be found in the cell cytosol. It has been suggested to be involved in several basic biological events such as cell death, tumor progression, and neurodegenerative disorders. The encoded preproprotein undergoes proteolytic processing to generate a disulfide-linked heterodimeric mature protein comprised of alpha and beta subunits. Mice lacking the encoded protein exhibit increased severity of autoimmune myocarditis, faster progression of the acute inflammation to myocardial scarring and decreased brain injury following neonatal hypoxic-ischemic injury. [provided by RefSeq, Nov 2015]

Product images:



Circular map for MR207148L3



Double digestion of MR207148L3 using SgfI and MluI