

Product datasheet for **MR207135**

Mgat1 (NM_010794) Mouse Tagged ORF Clone

Product data:

Product Type:	Expression Plasmids
Product Name:	Mgat1 (NM_010794) Mouse Tagged ORF Clone
Tag:	Myc-DDK
Symbol:	Mgat1
Synonyms:	Mgat-1
Mammalian Cell Selection:	Neomycin
Vector:	pCMV6-Entry (PS100001)
E. coli Selection:	Kanamycin (25 ug/mL)



[View online »](#)

ORF Nucleotide Sequence:

>MR207135 ORF sequence
 Red=Cloning site Blue=ORF Green=Tags(s)

TTTTGTAATACGACTCACTATAGGGCGGCCGGAATTCGTCGACTGGATCCGGTACCGAGGAGATCTGCC
 GCC**CGGATCGCC**

ATGCTGAAGAAGCAGACTGCAGGGCTTGTGCTTTGGGGTCTATCATCTTTGTGGCTGGAATGCCCTGC
 TGCTTCTCTTCTTCTGGACACGCCAGCACCTGGCAGGCTGCCCTCAGACAGCGCCTTGGTGTGACCC
 TGCCAGCCTCACCCGTGAGGTATCCACCTGGCCGAGGACGCTGAGGCGAGTTGGAGCGGCAGAGGGGA
 CTGTTGCAGAAATCAAGGAGCATTATGCTTTGTGGAGGAGAGGTGGAGAGTCCCACTGTGGCCCTC
 CAGCCTGGCCCGTGTGCTGTGACCCCTCACCACTGCAGATCCCCATCCTGGTATTGCTGTGACCC
 CAGCACTGTCCGGCGCTGCTGGATAAGTTGTTGCACTATCGGCCCTCAGCTGAGCGTTTCCCCATTATT
 GTCAGTCAGGACTGTGGGCATGAAGAGACAGCACAGGTCATTGCTTCTATGGCACTGCAGTCACACACA
 TCCGGCAGCCGGACCTGAGTAACATTGCCGTGCAGCCAGACCACCGCAAGTCCAGGGTACTACAAGAT
 TGCCAGGCACTACCGCTGGGCACTAGGCCAGATTTCAACAAGTCAAGTCCCGGCCGCTGTGGTAGTG
 GAGGATGATCTGGAAGTGGCACCAGACTTCTTTGAGTACTCCAGGCCACCTACCACTGCTGAGAACAG
 ACCCTCCCTTTGGTGTGTCTGCTTGAATGACAATGGCAAGGAGCAGATGGTAGACTCAAGCAAACC
 TGAGCTGCTCTATCGAACAGACTTTTTCTGGCCTTGGATGGCTGCTGTTGGCTGATCTGTGGGCAGAG
 CTGGAGCCCAAGTGGCCCAAGGCCTTTTGGGACGACTGGATGCGCCGACCTGAGCAGCGAAAGGACGGG
 CTTGTATTCGTCCAGAAATTTCAAGAACTATGACCTTTGGTCGCAAGGGTGTGAGCCACGGGCAGTTCTT
 TGACCAGCATCTTAAGTTCATCAAGCTGAACCAGCAGTTCGTCCCTTACCCAGTTGGACCTGTGCTAC
 CTGCAGCAGGAGGCTATGACCCGGACTTCCTCGCCAGGTCTATGGTCCCCCAGCTACAGGTGGAGA
 ACTTAAGGACCAATGATCAGAAGGAGCTGGGGGAGGTGCGGGTACAGTACACTAGCAGAGACAGTTCAA
 GGCTTTGCTAAGGCCCTGGGTGTCATGGATGACCTCAAGTCTGGTGTCCCAGGGCTGGCTACCGTGGC
 ATTGTCACTTTCCAGTTTCGGGGCCGGCTGTGCACCTGGCACCCCCACAGACATGGACTGGCTATGATC
 CTAGCTGGAAT

ACGCGTACGCGGCCGCTCGAGCAGAACTCATCTCAGAAGAGGATCTGGCAGCAAATGATATCCTGGATT
 ACAAGGATGACGACGATAAGGTTTAA

Protein Sequence:

>MR207135 protein sequence
 Red=Cloning site Green=Tags(s)

MLKKQTAGLVWGAIIIFVGNALLLLFFWTRPAPGRPLPSDALSALGDDPASLTREVIHLAEDAEEALERQGR
 LLQIQIKEYALWRQRWRVPTVAPPAPRPVPTSPVQIPILVIACDRSTVRRCLDKLLHYRPSAERFPII
 VSQDCGHEETAQVIASYGTAVTHIRQPDLSNIAVQPDHRKFQGYKYIARHYRWALGQIFNKFKFPAVVV
 EDDLEVPDFFEYFQATYPLLRTPSLWCVSAWNDNGKEQMVDSKPELLYRTDFPGLGWLLADLWAE
 LEPKWPKAFWDDWMRPEQRKGRACIRPEISRTMTFGRKGVSHGQFFDQHLKFIKLNQQFVPFTQLDLSY
 LQQEAYDRDFLAQVYGAPQLQVENLRNDQKELGEVRVQYTSRDSFKAFKALGVMDDLKSGVPRAGYRG
 IVTFQFRGRRVHLAPPQTWTGYDPSWN

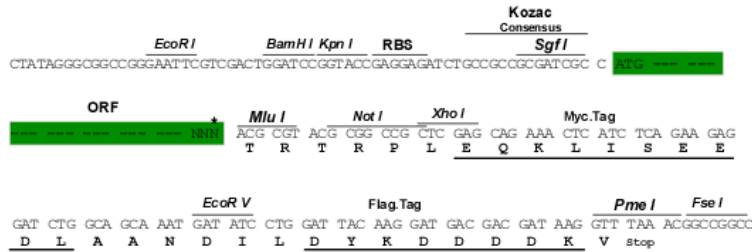
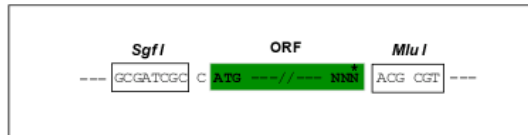
TRTRPLEQKLISEEDLAANDILDYKDDDDKV

Restriction Sites:

Sgfl-MluI

Cloning Scheme:

Cloning sites used for ORF Shuttling:



* The last codon before the Stop codon of the ORF

ACCN: NM_010794

ORF Size: 1344 bp

OTI Disclaimer: The molecular sequence of this clone aligns with the gene accession number as a point of reference only. However, individual transcript sequences of the same gene can differ through naturally occurring variations (e.g. polymorphisms), each with its own valid existence. This clone is substantially in agreement with the reference, but a complete review of all prevailing variants is recommended prior to use. [More info](#)

OTI Annotation: This clone was engineered to express the complete ORF with an expression tag. Expression varies depending on the nature of the gene.

Components: The ORF clone is ion-exchange column purified and shipped in a 2D barcoded Matrix tube containing 10ug of transfection-ready, dried plasmid DNA (reconstitute with 100 ul of water).

Reconstitution Method:

1. Centrifuge at 5,000xg for 5min.
2. Carefully open the tube and add 100ul of sterile water to dissolve the DNA.
3. Close the tube and incubate for 10 minutes at room temperature.
4. Briefly vortex the tube and then do a quick spin (less than 5000xg) to concentrate the liquid at the bottom.
5. Store the suspended plasmid at -20°C. The DNA is stable for at least one year from date of shipping when stored at -20°C.

RefSeq: [NM_010794.2](#), [NP_034924.2](#)
RefSeq Size: 3040 bp

RefSeq ORF: 1344 bp

Locus ID: 17308

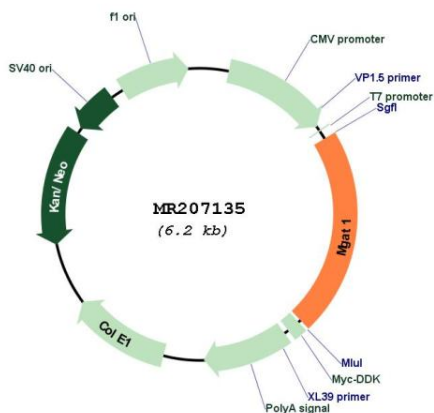
UniProt ID: [P27808](#)

Cytogenetics: 11 29.27 cM

MW: 51.7 kDa

Gene Summary: Initiates complex N-linked carbohydrate formation. Essential for the conversion of high-mannose to hybrid and complex N-glycans.[UniProtKB/Swiss-Prot Function]

Product images:



Circular map for MR207135