

## Product datasheet for **MR207125**

### **Mtrf1 (NM\_145960) Mouse Tagged ORF Clone**

#### **Product data:**

Product Type:	Expression Plasmids
Product Name:	Mtrf1 (NM_145960) Mouse Tagged ORF Clone
Tag:	Myc-DDK
Symbol:	Mtrf1
Synonyms:	A830062K05Rik; MtRF-1
Mammalian Cell Selection:	Neomycin
Vector:	pCMV6-Entry (PS100001)
E. coli Selection:	Kanamycin (25 ug/mL)



[View online »](#)

**ORF Nucleotide Sequence:**

>MR207125 ORF sequence  
 Red=Cloning site Blue=ORF Green=Tags(s)

TTTTGTAATACGACTCACTATAGGGCGGCCGGAATTCGTCGACTGGATCCGGTACCGAGGAGATCTGCC  
 GCC**CGATCGCC**

ATGAGTCATCACCTGTGTATTTGGCTTTTTCGGAATCCATTTCTCCGTGCGTGCCCCAGAGACATGTCT  
 TCCTTTCTTGTCAGCAGTTCCGACAGATAAGCCTTGATACAAGGCCGTGGAATTTAGACAAAAGAAGAC  
 TCATGTTCTCTATCAGCTCTTAAACAAGAGTTGGTCCAGGGGCTGCTGTATCAAGGCACAAAGGAAGCTT  
 TGGAAACACAAAGCCCTACAGAAGTATATGGAAGACCTGAATAAAGAGTACCAAACCTTGACCAGTGTC  
 TGCAGGGTATCTCTGAGAATGAAGGAGACCGAAGGCCTTACACAGAAGGCATGCTCAGTTGGCACCCT  
 TGCGGCTGTTTACCAAGAAATTCAGGAGGCCGAACAAGCCATTGAAGAATTAGAGTCATTGTGTAAGT  
 CTAATAAACAAGATGAAAAGCAGTTGCAAGAAGTGTGTGAGAAGAAAGCAAATCATTGATCAGAAGA  
 TCCACAGACTGTATAGTGAGCTTTGGAGCGTTAGTGCCTAAGGAGAAGTATGATTGGAGTGACGTTAT  
 TCTAGAAGTGACATCTGGAAGAAGTACTGGAGGTGATATCTGCCAACAGTTTACCGGGAAATTTTGGAT  
 ATGTACCAGAATTATTCATACTATAAGCACTGGAATTTGAGCTGCTGAATTATACACCAGCCGATTATG  
 GTGGACTACATCATGCAGCTGCCCGGATTTCCGGTGACAGTGTTATAAGCATTGAAGTATGAAGGCGG  
 AATCCATCGAGTTCAGCGCATCCCGAGGTGGCCTGTCATCACGGATGCAGCGCATTACACGGGAACA  
 ATGTCAGTGATTGCTTCCACAGCCAGATGAGGTAGATGTGAAAGTGGATCCCAAGGATCTGCGAGTAG  
 ACACATTCGAGCCAGAGGAGCAGGGGGGCGAGCATGTTAACACCACCGACAGTGCCGTGAGGCTTGCCA  
 CATTCCCACGGGACTGGTAGTAGTGCCAACAAGAAGCATCACAGCTGAAAAATAAAGAAATAGCTTTG  
 CGTGTGTTGAGAGCCAGACTCTACCAACAGATAATCGAGAAAGACAGGTGTCAGCAGCAGAATGCTAGAA  
 AATTGTCAGGTGGGAACAAGAGCCAGTCGGAGAGAATTCGGACATATAATTTACCCAGGATAGATCAG  
 TGACCACAGGATAGCGTATGAAGTTCGTGACATTAAGGAATTTTACGTGGTGAGAAGTGCCTGGATCAG  
 CTAATTGAGAGATTGCTCAATCAGCAGATGAAGAGGCCATTTCCGAATTTTGGATGAAAGCCTTCAAT  
 CAGTGAAA

**ACGCGT**ACGCGGCCGCTCGAGCAGAACTCATCTCAGAAGAGGATCTGGCAGCAAATGATATCCTGGATT  
 ACAAGGATGACGACGATAAGGTTTAA

**Protein Sequence:**

>MR207125 protein sequence  
 Red=Cloning site Green=Tags(s)

MSHHLCIWLFNRPFLRACPQRHVFLSCQQFRQISLDTRPWNFRQKTHVLYQLLNKSWSRGCCHQGTRKL  
 WKHKALQKYMEDLNKEYQTLDQCLQGISENEGDRRALHRRHAQLAPLAAVYQEIQEAQIEELESCKS  
 LNKQDEKQLQELVSEERQIIDQIHRLYSELLERLVPKEKYDWSVDVILEVTSGRITGGDQCQFTREIFD  
 MYQNYSSYKHWKFELLNYPADYGLHHAARI SGDSVYKHLKYEGGIHRVQRIPEVGLSSRMQRIHTGT  
 MSVIVLPQPDEVDVKVDPKDLRVDTFRARGAGGQHVNTTDSAVRLVHIPTGLVVECCQERSQLKNKEIAL  
 RVLRLRYQQIIEKDRCQQNARKLQVGTTRAQSERIRTYNFTQDRVTDHRIAYEVVDIKEFLRGEKCLDQ  
 LIERLLQSADEEAISEFLDESLQSVK

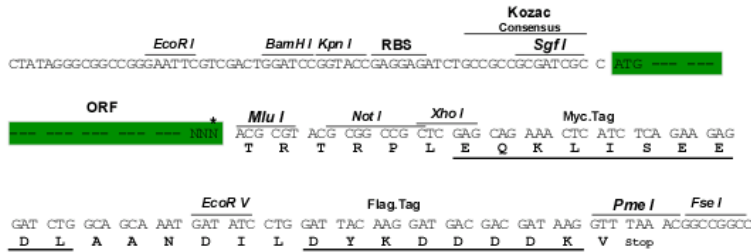
**TR**TRPLEQKLISEEDLAANDILDYKDDDDKV

**Restriction Sites:**

SgfI-MluI

**Cloning Scheme:**

Cloning sites used for ORF Shutting:



\* The last codon before the Stop codon of the ORF

**ACCN:** NM\_145960

**ORF Size:** 1341 bp

**OTI Disclaimer:** The molecular sequence of this clone aligns with the gene accession number as a point of reference only. However, individual transcript sequences of the same gene can differ through naturally occurring variations (e.g. polymorphisms), each with its own valid existence. This clone is substantially in agreement with the reference, but a complete review of all prevailing variants is recommended prior to use. [More info](#)

**OTI Annotation:** This clone was engineered to express the complete ORF with an expression tag. Expression varies depending on the nature of the gene.

**Components:** The ORF clone is ion-exchange column purified and shipped in a 2D barcoded Matrix tube containing 10ug of transfection-ready, dried plasmid DNA (reconstitute with 100 ul of water).

**Reconstitution Method:**

1. Centrifuge at 5,000xg for 5min.
2. Carefully open the tube and add 100ul of sterile water to dissolve the DNA.
3. Close the tube and incubate for 10 minutes at room temperature.
4. Briefly vortex the tube and then do a quick spin (less than 5000xg) to concentrate the liquid at the bottom.
5. Store the suspended plasmid at -20°C. The DNA is stable for at least one year from date of shipping when stored at -20°C.

**RefSeq:** [NM\\_145960.1](#)
**RefSeq Size:** 1862 bp

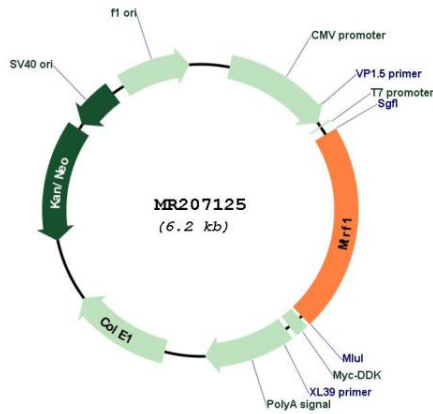
**RefSeq ORF:** 1341 bp

**Locus ID:** 211253

**UniProt ID:** [Q8K126](#)

**Cytogenetics:** 14 D3  
**MW:** 52.5 kDa  
**Gene Summary:** Mitochondrial peptide chain release factor that directs the termination of translation in response to the peptide chain non-cognate termination stop codons AGG and AGA. [UniProtKB/Swiss-Prot Function]

**Product images:**



Circular map for MR207125