

Product datasheet for **MR207032**

Uba3 (NM_011666) Mouse Tagged ORF Clone

Product data:

Product Type:	Expression Plasmids
Product Name:	Uba3 (NM_011666) Mouse Tagged ORF Clone
Tag:	Myc-DDK
Symbol:	Uba3
Synonyms:	A830034N06Rik; AI256736; AI848246; AW546539; Ube1c
Mammalian Cell Selection:	Neomycin
Vector:	pCMV6-Entry (PS100001)
E. coli Selection:	Kanamycin (25 ug/mL)



[View online »](#)

ORF Nucleotide Sequence:

>MR207032 ORF sequence
 Red=Cloning site Blue=ORF Green=Tags(s)

TTTTGTAATACGACTCACTATAGGGCGGCCGGAATTCGTGACTGGATCCGGTACCGAGGAGATCTGCC
 GCC**CGCATCGCC**

ATGGCTGTTGATGGTGGGTGTTGGGGACTGGAGACTGGGAAGGTCGCTGGAACCATGTAAGAAGTTCC
 TCGAGCGTCTGGACCCCTCACACACCCCGATTCGAACCAAGCACTGAATCACTCCAGTCTTGTAGTA
 TACATGTAAGTCTAGTCATTGGAGCTGGTGGCTTAGGATGTGAGCTTCTGAAAAATCTGGCATTATCT
 GGTTTTAGACAGATTCATGTTATAGACATGGACTATAGATGTTTCCAATTTAAATAGACAGTTTTTAT
 TTAGGCCATAAGATGTTGGAAGACCCAAGGCTGAAGTTGCTGCAGAATTCCTAAATGACAGAGTTCTAA
 CTGCAACGTGGTCCACATTTCAACAAGATTCAAGATTTAAACGACACTTCTACCGACAATTTTCATATC
 ATTGTATGTGGCCTGGACTCTATCATAGCGAGAAGATGGATCAATGGAATGCTGATATCTTCTAAATT
 ATGAAGATGGTGTGGATCCAAGCTCCATTGTACCTTTGATAGATGGGGGACAGAAGGCTTTAAAGG
 GAATGCCCGAGTGATTTGCCTGGAATGACCGCTTGATTGAGTGCCTGGAACCTTACCCACCACAG
 GTCAATTTCCCATGTGTACCATTGCATCTATGCCTAGGCTCCCGAAGCACTGTATCGAGTATGTGAGGA
 TGGTCAATGGCCTAAAGAGCAGCCTTTTGGAGATGGGGTTCCATTAGATGGAGATGACCCTGAACATAT
 TCAGTGGATTTTCCAAAAGTCCATAGAGAGAGCATCACAAATAAATTAGAGGCGTTACCTACAGACTC
 ACTCAAGGGTGGTAAAACGAATCATTCTGCAGTAGCTTCTACAAATGCAGTCATTGCAGCTGTGTGTG
 CCACTGAGGTTTTCAAGTAGCTACAAGTGCATACATCCCTTAATAACTACCTGGTATTCAATGATGT
 AGATGGGCTGTACTTACAGTTTGAAGCAGAGAGAAAGGAAAAGTGTCCAGCATGTAGCCAATTCCT
 CAAAACATTGATTTTCCCATCAGCTAAATTACAGGAGGCTTAGACTACCTAACCAACAGTGTCTCTC
 TGCAAATGAAGTCTCCGGCTATCACAGCCACATTAGAGGGGAAGAACAGGACACTTACTACAGTCAGT
 AACGCTATTGAAGAACGAACCGCCCAATCTTTCCAAAACATTAAGAAGTGGGACTAGTTGATGGA
 CAAGAAGTGGCTGTTGCTGATGTCACTACACCACAGACTGTACTATTCAAACCTCATTCTTACT

ACGCGTACGCGGCCGCTCGAGCAGAACTCATCTCAGAAGAGGATCTGGCAGCAAATGATATCCTGGATT
 ACAAGGATGACGACGATAAGGTTTAA

Protein Sequence:

>MR207032 protein sequence
 Red=Cloning site Green=Tags(s)

MAVDGGCGDWDWEGRWNHVKKFLERSGPFTHPDFEPSTESLQFLLDTCVKLVIGAGGLGCELLKNLALS
 GFRQIHVIDMDTIDVSNLNRQFLFRPKDVGRPKAEVAAEFLNDRVPNCNVVPHFNKIQDFNDTFYRQFHI
 IVCGLDSIARRWINGMLISLLNYEDGVLDPSSIVPLIDGGTEGFKGNARVILPGMTACIECTLELYPPQ
 VNFPMCTIASMPRLPEHCIEYVRMLQWPKEQPFQDGVPLDGGDPEHIQWIFQKSIERASQYNIRGVTYRL
 TQGVVKRIIPAVASTNAVIAAVCATEVFKIATSAYIPLNNYLVFNDVDGLYTYTFAERKENCPCASQLP
 QNIQFSPSAKLQEVLDYLTNSASLQMKSPAITATLEGKNRTLYLQSVTSIEERTRPNLSKTLKELGLVDG
 QELAVADVTTPTVLFKLHFT

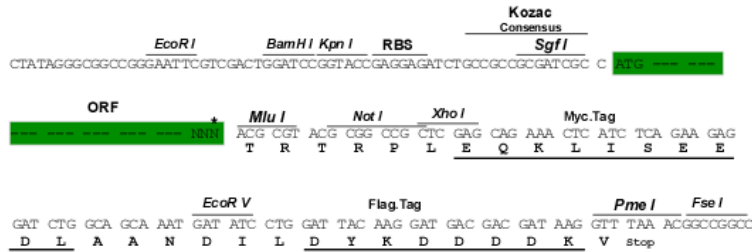
TRTRPLEQKLISEEDLAANDILDYKDDDDKV

Restriction Sites:

SgfI-MluI

Cloning Scheme:

Cloning sites used for ORF Shutting:



* The last codon before the Stop codon of the ORF

ACCN: NM_011666

ORF Size: 1326 bp

OTI Disclaimer: The molecular sequence of this clone aligns with the gene accession number as a point of reference only. However, individual transcript sequences of the same gene can differ through naturally occurring variations (e.g. polymorphisms), each with its own valid existence. This clone is substantially in agreement with the reference, but a complete review of all prevailing variants is recommended prior to use. [More info](#)
OTI Annotation: This clone was engineered to express the complete ORF with an expression tag. Expression varies depending on the nature of the gene.

Components: The ORF clone is ion-exchange column purified and shipped in a 2D barcoded Matrix tube containing 10ug of transfection-ready, dried plasmid DNA (reconstitute with 100 ul of water).

Reconstitution Method:

1. Centrifuge at 5,000xg for 5min.
2. Carefully open the tube and add 100ul of sterile water to dissolve the DNA.
3. Close the tube and incubate for 10 minutes at room temperature.
4. Briefly vortex the tube and then do a quick spin (less than 5000xg) to concentrate the liquid at the bottom.
5. Store the suspended plasmid at -20°C. The DNA is stable for at least one year from date of shipping when stored at -20°C.

RefSeq: [NM_011666.1](#), [NP_035796.1](#)
RefSeq Size: 2632 bp

RefSeq ORF: 1389 bp

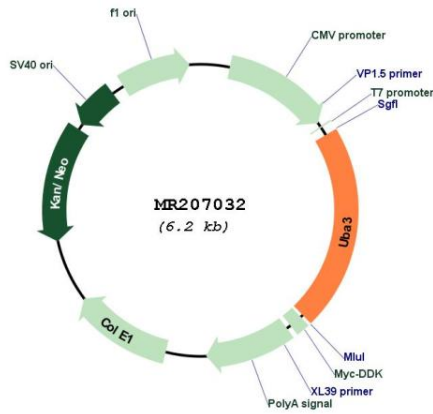
Locus ID: 22200

UniProt ID: [Q8C878](#)
Cytogenetics: 6 D3

MW: 49.2 kDa

Gene Summary: The protein encoded by this gene is the catalytic subunit of the enzyme that activates NEDD8, a ubiquitin-like molecule that binds to its target proteins through an enzymatic reaction analogous to ubiquitylation. Embryonic mice deficient for this protein die prior to implantation and display apoptosis of the inner cell mass. Trophoblastic cells cannot enter S phase, demonstrating that this gene is required for cell cycle progression during embryogenesis. Two pseudogenes have been found for this gene. Alternative splicing results in multiple transcript variants encoding different isoforms. [provided by RefSeq, Sep 2014]

Product images:



Circular map for MR207032