

Product datasheet for **MR206980**

Tulp2 (BC089545) Mouse Tagged ORF Clone

Product data:

Product Type: Expression Plasmids
Product Name: Tulp2 (BC089545) Mouse Tagged ORF Clone
Tag: Myc-DDK
Symbol: Tulp2
Synonyms: Pdet
Vector: pCMV6-Entry (PS100001)
E. coli Selection: Kanamycin (25 ug/mL)
Cell Selection: Neomycin
ORF Nucleotide Sequence: >MR206980 representing BC089545
Red=Cloning site Blue=ORF Green=Tags(s)

TTTTGTAATACGACTCACTATAGGGCGCCGGGAATTCGTCGACTGGATCCGGTACCGAGGAGATCTGCC
GCC**CGGATCGCC**

ATGAGCTATGTCGCAGATGGGAGTGTATACACTCGGGCAACGGCCCTGCGGTCCGTCATCATCTTTGCT
GGCTTCCAGACAGCTCCGATTCCAGACGTGGAGGAAGTGACCATGGAAGACATCCCCGTCATCTCCCGACC
TCCCCAGACGAATCTGGCAAACCTACGCAGGGGCTGGTTAGCCTCCCCAGGACCCGGGATCAGTCAAGAA
GAAAAAGAAGAAGAGTTGGATCCACGGATGCCAGAGTTGAAGACAAGACACCCAGCCCAGACCCAGACC
CAGACCCTACCGTGAACCTCTGACGGAGATCATGGAGACCTGGCACCCCTGCAAGGTGGAAGAAAACACAGC
CCAGAAGAATACAGAAACAGCCTCTGGCATCGGGGATGAAGACCGGGAGAAGGGAGAGGTCACAGAGTCT
ACAGAGACAAACTATGCCCCAGTGGCATCCAAGGTTTTGCAAGGCGACGATGGTGACGCCAGCAACCACA
ATGCCTGGAACATGACCTGCCCCAGCCTCGCATTCCCGGCCCTCGGCTCGGGGAGGACATGGAAGCATA
CGTGTGCTCCCTGCACCCCGAGACCACATGGTGCAGTGCCGCATCGTCCGAAACAAGCACGGCATGGAC
AAGGGGATGTTCCCTTCTACTACCTCTACCTGGAGGCCGAGGATGGTGTAGCACATTTCTTCTGGCTG
GGCGGAAAAGGAAAAGAAGCAAACCTTCAAATTAATCTCATCTCCCTGGACCCCAAAGACATGTCTCGCAA
TGGGAGCAAATTTGTAGGCAAAGTTAGATCCAATGTCTTGGGCACGAAATTCACCATCTTCGATAATGGG
GTGAACCTGAGCGGAGTTACTGGTTCAGACAGTGCACCGGATCAGAGAGGAGCTGGGAGTCGTCTGTT
ATGAGACCAATGTCTTGGGATTCAGGGGCTCGGAAAATGACTGTGATCCTTCCAGGAATGGACAGCCG
GAAGCAGAGGATGAAAGTCCAGCCACAAAATGATCAGGATTCCATATTGAGTCGCGTACAGAAGGGCGCT
GGACACGGGCTGCTTCTACTGCAGAACAAGGCCCATCGTGGAGCGACGAAAGCGGCGCATACGTACTCA
ATTTTCACGGTCGCGTCACGCGGCTTCAGTCAAGAACTCCAGATAGTGCACCCGGATGAACCCGACCA
CCTGGTGTCCAGTTTGGCCGTGTGCCCAAACATATTCACGATGGATTTCCGATATCCTTTTGGCCG
CTCCAAGCCTTCGCCATCTGCTTATCCAGTTTCGATGGGAAACTGGCGTGTGAG

ACGCGTACGCGGCCGCTCGAGCAGAAACTCATCTCAGAAGAGGATCTGGCAGCAAATGATATCCTGGATT
ACAAGGATGACGACGATAAGGTTTAA



Protein Sequence: >MR206980 representing BC089545
 Red=Cloning site Green=Tags(s)

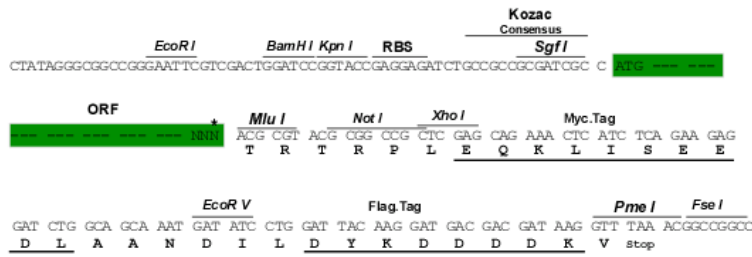
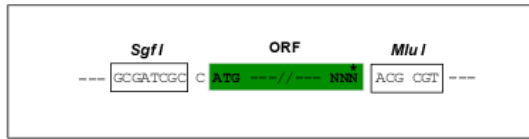
MSYVADGSVYTRGNPAVRHHLCLWLPDSSSDVVEEVTMEDIPVISRPPQTNLANLRRGWLASPGGISQE
 EKEEEVSTDAVEDKTPSPDPDPDPTVNSDGDHGLAPCKVEENTAQKNTETASGIGDEDREKGEVTES
 TETNYAPVASKVLQDDGDASNHNWMTCPQPRIPGPRLGEDMEAYVLLPAPRDHMQCRIVRNKHGMD
 KGMFSPSYLYLEAEDGVAHFLLAGRKRKRKSKTSNYLI SLDPKDMSRNGSNFVGKVRSNVLGTKFTIFDNG
 VNPERSYWVPSARIREELGVVCYETNVLGFRGPRKMTVILPGMDSRKQRMKVQPQNDQDSILSRVQKGA
 GHGLLLLQNKAPSWSDESGAYVLNFHGRVTRASVKNFQIVHPDEPDHLVLQFGRVAPNIFTMDFRYPLCP
 LQFAIICLSSFDGKLACE

TRTRPLEQKLISEEDLAANDILDYKDDDDKV

Restriction Sites:
 Cloning Scheme:

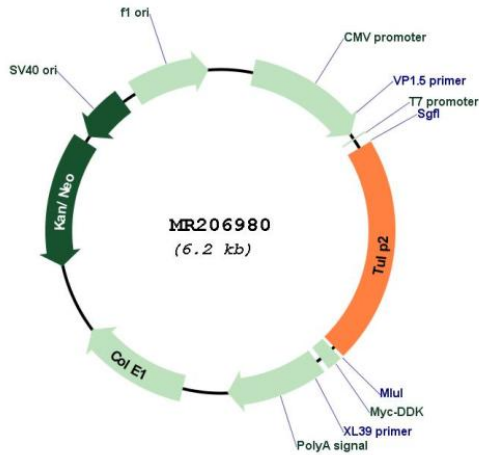
SgfI-MluI

Cloning sites used for ORF Shuttling:



* The last codon before the Stop codon of the ORF

Plasmid Map:



ACCN: BC089545

ORF Size:	1314 bp
OTI Disclaimer:	The molecular sequence of this clone aligns with the gene accession number as a point of reference only. However, individual transcript sequences of the same gene can differ through naturally occurring variations (e.g. polymorphisms), each with its own valid existence. This clone is substantially in agreement with the reference, but a complete review of all prevailing variants is recommended prior to use. More info
OTI Annotation:	This clone was engineered to express the complete ORF with an expression tag. Expression varies depending on the nature of the gene.
Components:	The ORF clone is ion-exchange column purified and shipped in a 2D barcoded Matrix tube containing 10ug of transfection-ready, dried plasmid DNA (reconstitute with 100 ul of water).
Reconstitution Method:	<ol style="list-style-type: none">1. Centrifuge at 5,000xg for 5min.2. Carefully open the tube and add 100ul of sterile water to dissolve the DNA.3. Close the tube and incubate for 10 minutes at room temperature.4. Briefly vortex the tube and then do a quick spin (less than 5000xg) to concentrate the liquid at the bottom.5. Store the suspended plasmid at -20°C. The DNA is stable for at least one year from date of shipping when stored at -20°C.
RefSeq:	BC089545.1
RefSeq Size:	1554 bp
RefSeq ORF:	1316 bp
Locus ID:	56734
Cytogenetics:	7 B3
MW:	57 kDa