

Product datasheet for **MR206973**

Sept7 (NM_009859) Mouse Tagged ORF Clone

Product data:

| | |
|---------------------------|--|
| Product Type: | Expression Plasmids |
| Product Name: | Sept7 (NM_009859) Mouse Tagged ORF Clone |
| Tag: | Myc-DDK |
| Symbol: | Sept7 |
| Synonyms: | Cdc10; E430034N22 |
| Mammalian Cell Selection: | Neomycin |
| Vector: | pCMV6-Entry (PS100001) |
| E. coli Selection: | Kanamycin (25 ug/mL) |



[View online »](#)

ORF Nucleotide Sequence:

>MR206973 ORF sequence
 Red=Cloning site Blue=ORF Green=Tags(s)

TTTTGTAATACGACTCACTATAGGGCGGCCGGAATTCGTCGACTGGATCCGGTACCGAGGAGATCTGCC
 GCC**CGGATCGCC**

ATGTCGGTCAGTGCAGATCCGCTGCTGCCGAGGAGAGGAGCGTCAACTGCGGCACCATGGCTCAACCGA
 AGAACCTTGAGGGCTATGTGGGCTTTGCCAACCTCCCAAATCAAGTGTACAGAAAATCCGTGAAAAGAGG
 ATTTGAATTCACCTCTTATGGTAGTAGGTGAATCTGGACTGGGAAAAGTCGACATTAATCAACTCATTATTC
 CTCACAGATTTGTATTCTCCAGAGTATCCAGGACCTTCTCATAGAATCAAAAAGACTGTACAGGTGGAGC
 AATCCAAAGTTTTAATCAAAGAAGGTGGTTCAGTTGCTGCTGACAATAGTTGATACTCCAGGATTTGG
 AGATGCAGTGGATAATAGTAATTGCTGGCAGCCTGTTATCGACTACATTGATAAGTAAATTTGAAGATTAC
 TTAATGCAGAATCTCGAGTGAACAGACGTCAGATGCCTGATAACAGGGTGCAGTGTGTTTATACTTCA
 TTGCTCCTTCAGGACATGGACTTAAACCATTGGACATTGAGTTTATGAAACGTTTGCATGAAAAAGTGAA
 TATCATCCATTAATTGCCAAAGCAGACACACTTACACCAGAGGAATGCCAACAGTTTAAAAAGCAGATA
 ATGAAAGAAATCAAGAACATAAAATTAATATGAATTTCCAGAAACAGATGATGAAGAAGAGAATA
 AACTGGTTAAGAAGATAAAGGACCGTTTACCTCTTGCTGTGGTAGGTAGTAATACTATCATTGAAGTTAA
 TGGCAAAGAGTCAGAGGAAGGCAGTATCCTTGGGGTGTGGCTGAAGTTGAAAATGGTGAACATTGTGAT
 TTCACAATTCTAAGAAATATGTTGATAAGAACACATATGCAGGACTTGAAAGATGTTACCAATAACGTAC
 ACTATGAGAACTACAGAAGCAGAAAGCTAGCAGCAGTACTTACAATGGAGTGGATAACAACAAGAACAA
 AGGGCAGCTTACCAAGAGCCCTCTGGCACAGATGGAAGAAGAAAGGGAACATGTAGCCAAAATGAAG
 AAGATGGAGATGGAGATGGAACAGGTGTTTGGATGAAGTCAAAGAAAAAGTTCAAAAAGTGAAGGACT
 CTGAAGCAGAGCTCCAGCGCGCCATGAGCAAATGAAAAAGAAATTTAGAAGCACAGCACAAGAATTAGA
 GGAAAAACGTCGTCAGTTTGAAGAAGAAAAAGGCAAACCTGGGAAGCTCAACAGCGTATTTTAGACCAACAG
 AACTCTCAAGAACCTTGAAAAAGAAACAAGAAGAAAGGCAAGATCTTT

ACGCGTACGCGGCCGCTCGAGCAGAAACTCATCTCAGAAGAGGATCTGGCAGCAAATGATATCCTGGATT
 ACAAGGATGACGACGATAAGGTTTAA

Protein Sequence:

>MR206973 protein sequence
 Red=Cloning site Green=Tags(s)

MSVSARSAEAERSVNCGTMAQPKNLEGYVGFANLPNQVYRKSVKRGFEFTLMVVGESLGGKSTLINSFL
 LTDLYSPEYPGPSHRIKKTIVQVEQSKVL IKEGGVQLLLTIVDTPGFDAVDNSNCWQPVIDYIDSKFEDY
 LNAESRVNRRQMPDNRVQCCLYFIAPSGHGLKPLDIEFMKRLHEKVNI IPLIAKADLTPEECQQFKKQI
 MKEIQEHKIKIYEFPETDDEENKLVKIKDRLPLAVVGSNTIIEVNGKRVGRQYPWGVAEVENGEHCD
 FTILRNMLIRTHMQDLKDVNTNNVHYENYRSRKLAAVTYNGVDNKNKGGQLTKSPLAQMEERREHVAKMK
 KMEMEQVFEMKVKEKVQKLKDEAELQRRHEQMKNLEAQHKELEEKRRQFEEKANWEAQQRILEQQ
 NSSRTLEKNKKKGIKIF

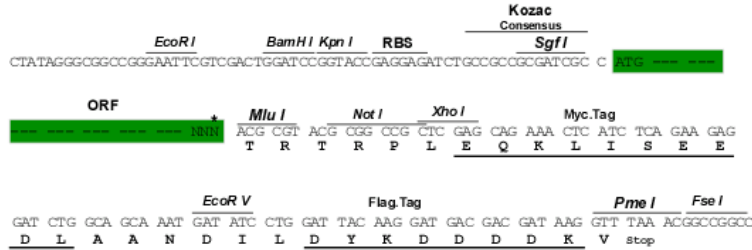
TRTRPLEQKLISEEDLAANDILDYKDDDDKV

Restriction Sites:

SgfI-MluI

Cloning Scheme:

Cloning sites used for ORF Shutting:



* The last codon before the Stop codon of the ORF

ACCN: NM_009859

ORF Size: 1311 bp

OTI Disclaimer: The molecular sequence of this clone aligns with the gene accession number as a point of reference only. However, individual transcript sequences of the same gene can differ through naturally occurring variations (e.g. polymorphisms), each with its own valid existence. This clone is substantially in agreement with the reference, but a complete review of all prevailing variants is recommended prior to use. [More info](#)

OTI Annotation: This clone was engineered to express the complete ORF with an expression tag. Expression varies depending on the nature of the gene.

Components: The ORF clone is ion-exchange column purified and shipped in a 2D barcoded Matrix tube containing 10ug of transfection-ready, dried plasmid DNA (reconstitute with 100 ul of water).

Reconstitution Method:

1. Centrifuge at 5,000xg for 5min.
2. Carefully open the tube and add 100ul of sterile water to dissolve the DNA.
3. Close the tube and incubate for 10 minutes at room temperature.
4. Briefly vortex the tube and then do a quick spin (less than 5000xg) to concentrate the liquid at the bottom.
5. Store the suspended plasmid at -20°C. The DNA is stable for at least one year from date of shipping when stored at -20°C.

RefSeq: [NM_009859.1](#)

RefSeq Size: 2533 bp

RefSeq ORF: 1314 bp

Locus ID: 235072

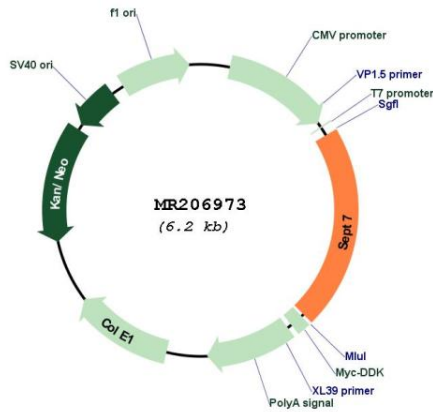
Cytogenetics: 9 A4

MW: 50.5 kDa

Gene Summary:

Filament-forming cytoskeletal GTPase. Required for normal organization of the actin cytoskeleton. Required for normal progress through mitosis. Involved in cytokinesis. Required for normal association of CENPE with the kinetochore. Plays a role in ciliogenesis and collective cell movements. Forms a filamentous structure with SEPTIN12, SEPTIN6, SEPTIN2 and probably SEPTIN4 at the sperm annulus which is required for the structural integrity and motility of the sperm tail during postmeiotic differentiation (By similarity).[UniProtKB/Swiss-Prot Function]

Product images:



Circular map for MR206973