

Product datasheet for **MR206898**

Ahcy (NM_016661) Mouse Tagged ORF Clone

Product data:

Product Type:	Expression Plasmids
Product Name:	Ahcy (NM_016661) Mouse Tagged ORF Clone
Tag:	Myc-DDK
Symbol:	Ahcy
Synonyms:	AA987153; AL024110; CuBP; SAHH
Mammalian Cell Selection:	Neomycin
Vector:	pCMV6-Entry (PS100001)
E. coli Selection:	Kanamycin (25 ug/mL)



[View online »](#)

ORF Nucleotide Sequence:

>MR206898 ORF sequence
 Red=Cloning site Blue=ORF Green=Tags(s)

TTTTGTAATACGACTCACTATAGGGCGGCCGGAATTCGTCGACTGGATCCGGTACCGAGGAGATCTGCC
 GCC**CGGATCGCC**

ATGCTGTGATAAACTGCCCTACAAAGTCGCGGACATCGGACTGGCCGCCTGGGGACGGAAGGCTCTGGATA
 TAGCTGAGAATGAGATGCCAGGATTGATGCGCATGCGGGAGATGTACTCAGCCTCCAAGCCACTGAAGGG
 TGCTCGCATTGCTGGCTGCCTGCACATGACCGTGGAGACTGCTGTTCTCATTGAGACTCTCGTGGCCCTG
 GGTGCTGAGGTGCGGTGGTCCAGCTGCAACATCTTCTCTACTCAGGACCATGCAGCGCTGCCATTGCCA
 AGGCTGGCATTCCAGTGTTCCTGGAAGGGCAGACAGATGAGGAGTACCTGTGGTGCATTGAGCAGAC
 GCTGCACCTCAAGGACGGACCCCTCAACATGATTCTGGATGATGGTGGTACCTTACTAACCTCATCCAC
 ACCAAATACCCACAGCTTCTGTCCAGGCATCCGAGGTATCTCTGAGGAGACCAGACTGGGGTCCACAACC
 TCTACAATATGATGTCCAATGGGATACTGAAGGTGCCTGCCATCAATGTCAACGATTCTGTACCAAGAG
 CAAGTTTGACAACCTCTATGGCTGCCGGGAGTCCCTCATAGATGGCATCAAACGGCCACAGATGTGATG
 ATTGCGGGCAAGGTGGCGGTGGTGGCAGGCTATGGTGATGTGGCAAGGGCTGTGCCAGGCCCTGAGGG
 GTTTTGGGGCCCGAGTCATCATACCGAGATCGACCCCATCAATGCACTGCAAGCTGCCATGGAGGGCTA
 TGAGGTAACCACTATGGACGAAGCCTGTAAGGAGGGCAACATCTTTGTCACCACCACAGGCTGTGTGGAT
 ATCATCCTTGGCCGGCAGCTTTGAGCAGATGAAGGATGACGCCATTGTCTGTAACATTGGACACTTCGATG
 TGGAGATTGATGTGAAGTGGCTCAATGAGAACGCGGTGGGAAAGTGAACATCAAGCCCCAGGTGGACCG
 CTACTGGCTAAGAATGGGCGCCGCATCATCTTGTGGCTGAAGCCGTCTGGTCAACCTGGGTTGTGCC
 ATGGGACACCCAGCTTCTGTGATGAGCAACTCCTTCACAAACCAGGTGATGGCACAGATTGAGCTGTGGA
 CCCACCCAGATAAATACCCTGTTGGGGTTCACCTCCTGCCTAAGAAGCTGGATGAGGCGGTGGCTGAAGC
 CCACCTGGGCAAGCTGAATGTGAAGCTGACCAAGCTGACTGAGAAGCAGGCCAGTACCTGGGCATGCC
 ATCAACGGCCCTTCAAGCCTGATCACTACCGCTAC

ACGCGTACGCGGCCGCTCGAGCAGAAACTCATCTCAGAAGAGGATCTGGCAGCAAATGATATCCTGGATT
 ACAAGGATGACGACGATAAGGTTTAA

Protein Sequence:

>MR206898 protein sequence
 Red=Cloning site Green=Tags(s)

MSDKLPYKVADIGLAAWGRKALDIAENEMPGLMRMREMYASASKPLKGARIAGCLHMTVETAVLIETLVAL
 GAEVRWSSCNIFSTQDHAAAAIAKAGIPVFAWKGETDEEYLWCIEQTLHFQDGPLNMILDDGGDLTNLIH
 TKYPQLLSGIRGISEETTTGVHNLNMMNSGILKVPAINVNDVTKSKFDNLYGCRESLIDGIKRATDVM
 IAGKVAVVAGYGDVKGCAQALRGFGARVIITEIDPINALQAAMEGYEVTMDEACKEGNIFVTTTGCVD
 IILGRHFEQMKDDAIVCNIGHFDVEIDVKWLNENAVEKVNIKPVQVDRYWLKNGRRIILLAEGRVLNLCGA
 MGHPSFVMSNSFTNQVMAQIELWTHPKYPVGVHFLPKKLDEAVAEHLGKLNVLTKLTKTEQAQYLGMF
 INGPFKPDHRY

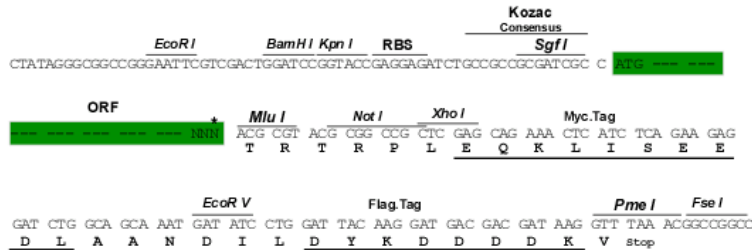
TRTRPLEQKLISEEDLAANDILDYKDDDDKV

Restriction Sites:

Sgfl-MluI

Cloning Scheme:

Cloning sites used for ORF Shutting:



* The last codon before the Stop codon of the ORF

ACCN: NM_016661

ORF Size: 1299 bp

OTI Disclaimer: The molecular sequence of this clone aligns with the gene accession number as a point of reference only. However, individual transcript sequences of the same gene can differ through naturally occurring variations (e.g. polymorphisms), each with its own valid existence. This clone is substantially in agreement with the reference, but a complete review of all prevailing variants is recommended prior to use. [More info](#)

OTI Annotation: This clone was engineered to express the complete ORF with an expression tag. Expression varies depending on the nature of the gene.

Components: The ORF clone is ion-exchange column purified and shipped in a 2D barcoded Matrix tube containing 10ug of transfection-ready, dried plasmid DNA (reconstitute with 100 ul of water).

Reconstitution Method:

1. Centrifuge at 5,000xg for 5min.
2. Carefully open the tube and add 100ul of sterile water to dissolve the DNA.
3. Close the tube and incubate for 10 minutes at room temperature.
4. Briefly vortex the tube and then do a quick spin (less than 5000xg) to concentrate the liquid at the bottom.
5. Store the suspended plasmid at -20°C. The DNA is stable for at least one year from date of shipping when stored at -20°C.

RefSeq: [NM_016661.2](#), [NP_057870.2](#)

RefSeq Size: 2560 bp

RefSeq ORF: 1299 bp

Locus ID: 269378

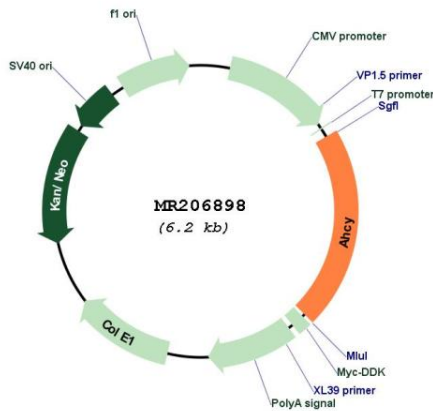
UniProt ID: [P50247](#)

Cytogenetics: 2 76.94 cM

MW: 47.7 kDa

Gene Summary: Adenosylhomocysteine is a competitive inhibitor of S-adenosyl-L-methionine-dependent methyl transferase reactions; therefore adenosylhomocysteinase may play a key role in the control of methylations via regulation of the intracellular concentration of adenosylhomocysteine.[UniProtKB/Swiss-Prot Function]

Product images:



Circular map for MR206898