

Product datasheet for **MR206856**

E2f1 (NM_007891) Mouse Tagged ORF Clone

Product data:

Product Type:	Expression Plasmids
Product Name:	E2f1 (NM_007891) Mouse Tagged ORF Clone
Tag:	Myc-DDK
Symbol:	E2f1
Synonyms:	E2F-1; mKIAA4009; Tg(Wnt1-cre)2Sor
Mammalian Cell Selection:	Neomycin
Vector:	pCMV6-Entry (PS100001)
E. coli Selection:	Kanamycin (25 ug/mL)



[View online »](#)

ORF Nucleotide Sequence:

>MR206856 representing NM_007891
 Red=Cloning site Blue=ORF Green=Tags(s)

TTTTGTAATACGACTCACTATAGGGCGGCCGGAATTCGTCGACTGGATCCGGTACCGAGGAGATCTGCC
 GCC**CGCATCGC**

ATGGCCGTAGCCCCCGGGCGGCCAGCACGCGCCAGCGCTGGAGCCCTGCTCGGGCGGGCGCGTTGC
 GGCTGCTCGACTCCTCGCAGATCGTCATCATCTCCACCGCGCCGATGTGGCGCCCCGAGCTCCCCGC
 CGCGCCGCCACTGGCCCTCGGATTCTGACGTGCTGCTCTTCGCCACGCCGAGCGCCCCGACCCGCG
 CCTAGTGACCCGCGCCGGCTCTCGGCCCGCCGGTGAACGGAGGCTGGATCTGGAGACTGACCATC
 AGTACCTCGTGGTAGCAGTGGCCATTCCGGGGCAGAGGCCGCCACCCAGGAAAGGTGTGAAATCTCC
 GGGGAGAAGTACGCTATGAAACCTCACTAAATCTGACCACAAACGCTTCTTGAGCTGCTGAGCCGC
 TCAGCTGACGGTGTGTTGACCTGAACTGGCAGCTGAGGTGCTGAAGGTGCAGAAACGGCGCATCTATG
 ACATCACCAATGTCTGGAGGGCATCCAGCTCATTGCCAAGAAGTCCAAGAATCATATCCAGTGGCTAGG
 CAGCCACACCATGGTGGGATTGGTAAGCGGCTTGAAGGCTGACCCAGGACCTGCAGCAACTGCAGGAG
 AGTGAGCAGCAGCTGGATCACCTGATGCACATCTGTACCACACAGCTGCAACTGCTTTCGGAGGACTCCG
 ACACCCAGCGCCTGGCCTATGTGACCTGCCAGGACCTTCGCAGCATTGCAGACCTGCAGAACAGATGGT
 CATAGTGATCAAGGCCCTCCTGAGACCAACTACAAGCTGTGGATTCTTCAGAGACATTTAGATCTCC
 CTTAAGAGCAAACAAGGCCCATTTGATGTTTTCTGTGCCCGGAGGAGAGTGCAGACGGGATTAGCCCTG
 GGAAGACCTCATGCCAGGAGACATCCTCTGGGGAGGACCGGACTGCAGACTCTGGCCAGCAGGGCTCC
 ACCATCACCTCCCTCCACATCCCAGCCTTGGATCCCAGTCAATCCCTGTTGGGCTGGAGCAAGAAGCA
 GTATTGCCACGGATGGGCCACCTGAGGGTCCCTATGGAAGAGGACCAACTGTCAACTGGTGGCTGCTG
 ACTCACTCTGGAGCATGTTAAGAAGACTTCTCTGGGCTCCTCCCTGGGAGTTATCAGCCTCTCCCC
 ACCCCACGAGGCCCTTGACTATCACTTTGGTCTCGAGGAGGATGAGGGCATTAGAGATCTCTTTGACTGT
 GACTTTGGGACCTGACCCCTCTGGATTTC

ACGCGTACGCGGCCGCTCGAGCAGAACTCATCTCAGAAGAGGATCTGGCAGCAATGATATCCTGGATT
 ACAAGGATGACGACGATAAGGTTTAA

Protein Sequence:

>MR206856 representing NM_007891
 Red=Cloning site Green=Tags(s)

MAVAPAGQHAPALEALLGAGALRLDSSQIVIISTAPDVGAPQLPAAPPTGPRDSVLLFATPQAPRPA
 PSAPRPALGRPPVKRRLDLETDHQYLAGSSGPFRRGRHPGKGVKSPGEKSRYETSLNLTKRFLELLSR
 SADGVVDLNWAAEVLKVQKRRIYDITNVLEGIQLIAKSKNHIQWLGSHTMVGIGKRLEGLTQDLQQLQE
 SEQQLDHLMHICTTQLQLLSESDTQRLAYVTCQDLRSIADPAEQMVIVIKAPPETQLQAVDSSETFQIS
 LKSKQGPIDVFLCPEESADGISPGKTSQETSSGEDRTADSGPAGPPSPSTSPALDPSQSLGLLEQEA
 VLPRMGHLRVPMEEQLSPLVAADSLLEHVKEDFSGLLPGEFISLSPHEALDYHFGLLEEGEGIRDLDFC
 DFGDLTPLDF

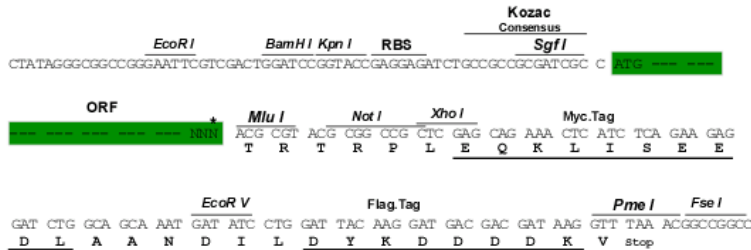
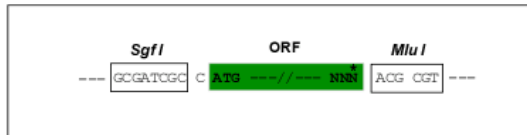
TRTRPLEQKLISEEDLAANDILDYKDDDDKV

Restriction Sites:

SgfI-MluI

Cloning Scheme:

Cloning sites used for ORF Shutting:



* The last codon before the Stop codon of the ORF

ACCN: NM_007891

ORF Size: 1290 bp

OTI Disclaimer: The molecular sequence of this clone aligns with the gene accession number as a point of reference only. However, individual transcript sequences of the same gene can differ through naturally occurring variations (e.g. polymorphisms), each with its own valid existence. This clone is substantially in agreement with the reference, but a complete review of all prevailing variants is recommended prior to use. [More info](#)
OTI Annotation: This clone was engineered to express the complete ORF with an expression tag. Expression varies depending on the nature of the gene.

Components: The ORF clone is ion-exchange column purified and shipped in a 2D barcoded Matrix tube containing 10ug of transfection-ready, dried plasmid DNA (reconstitute with 100 ul of water).

Reconstitution Method:

1. Centrifuge at 5,000xg for 5min.
2. Carefully open the tube and add 100ul of sterile water to dissolve the DNA.
3. Close the tube and incubate for 10 minutes at room temperature.
4. Briefly vortex the tube and then do a quick spin (less than 5000xg) to concentrate the liquid at the bottom.
5. Store the suspended plasmid at -20°C. The DNA is stable for at least one year from date of shipping when stored at -20°C.

RefSeq: [NM_007891.5](#)
RefSeq Size: 2469 bp

RefSeq ORF: 1293 bp

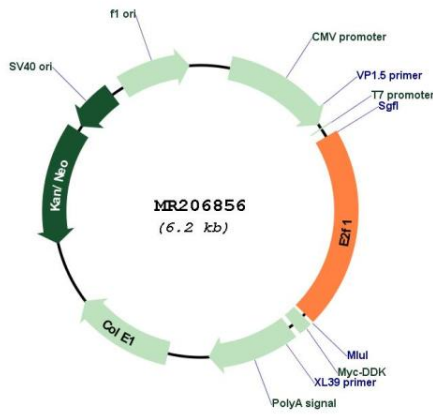
Locus ID: 13555

UniProt ID: [Q61501](#)
Cytogenetics: 2 76.79 cM

MW: 46.8 kDa

Gene Summary: Transcription activator that binds DNA cooperatively with DP proteins through the E2 recognition site, 5'-TTTC[CG]CGC-3' found in the promoter region of a number of genes whose products are involved in cell cycle regulation or in DNA replication. The DRTF1/E2F complex functions in the control of cell-cycle progression from G1 to S phase. E2F1 binds preferentially RB1 in a cell-cycle dependent manner. It can mediate both cell proliferation and TP53/p53-dependent apoptosis. Blocks adipocyte differentiation by binding to specific promoters repressing CEBPA binding to its target gene promoters (PubMed:11672531, PubMed:20176812). Positively regulates transcription of RRP1B (By similarity). [UniProtKB/Swiss-Prot Function]

Product images:



Circular map for MR206856