

Product datasheet for **MR206852**

Got2 (NM_010325) Mouse Tagged ORF Clone

Product data:

Product Type:	Expression Plasmids
Product Name:	Got2 (NM_010325) Mouse Tagged ORF Clone
Tag:	Myc-DDK
Symbol:	Got2
Synonyms:	AL022787; FABP-pm; Got-2; Kyat4; mAspAT
Mammalian Cell Selection:	Neomycin
Vector:	pCMV6-Entry (PS100001)
E. coli Selection:	Kanamycin (25 ug/mL)



[View online »](#)

ORF Nucleotide Sequence:

>MR206852 ORF sequence
 Red=Cloning site Blue=ORF Green=Tags(s)

TTTTGTAATACGACTCACTATAGGGCGGCCGGGAATTCGTCGACTGGATCCGGTACCGAGGAGATCTGCC
 GCC**CGATCGCC**

ATGGCCCTCTGCACTCCAGCCGCATCCTCTCCGGGATGGCTGCTGCCTTTCACCCAGGCCCTAGCTGCTG
 CAGCCTCTGCCAGAGCCAGCTCCTGGTGGACCCATGTTGAAATGGGACCTCCAGATCCCATCCTGGGCGT
 TACCGAAGCCTTCAAGAGAGATACCAACAGCAAGAAGATGAACCTGGGAGTTGGTGCCTACCGGGATGAT
 AACGGAACCTTACGTGCTCCCAAGTGTCCGGAAGGCAGAGGCCAGATTGCTGCAAAAAATTTGGACA
 AAGAATACCTGCCATTGGGGGACTGGCTGAATTCTGTAAGGCTTCTGCAGAACTGGCCCTGGGCGAGAA
 CAATGAAGTGTGAAAAGCGCCGGTTCGTCACGTGTCAGACCATTTCCGGGACTGGAGCCTTAAGGGTC
 GGGGCCAGTTTTCTGCAAAGTTTTTTAAGTTCAGCCGAGATGTCTTTCTGCCAAACCATCCTGGGGAA
 ATCACACGCCCATCTTCAGGGATGCCGGCATGCAGCTCCAAGTTATCGCTACTATGACCCCAAGACTTG
 CGTTTTGACTTCTCTGGAGCCCTAGAAGACATATCAAAAATCCCAGAGCAGAGTGTCTCTCTCGCAT
 GCCTGCGCTCACAAACCCACCGCGTGGACCCGGTCCCGAGCAGTGGAAGGAGATAGCGTCCGTGGTGA
 AGAAAAAGAATCTCTTCGCATTCTTTGACATGGCCTACCAAGGCTTTGCCAGCGGTGATGGTGTAAAGGA
 TGCTGGGCCGTGCGGCCTTATCGAGCAGGGCATCAATGTCTGCCTCTGCCAATCGTATGCCAAGAAC
 ATGGGCCGTGACGGTGAAGTGTGGGAGCCTTACGGTGGTCTGCAAAGATGCAGAAGAAGCCAAAAGGG
 TGGAGTACAGCTGAAGATCTTGATCCGTCCCCTGTATTCCAACCCACCTCTCAATGGGGCCCGGATCGC
 AGCAACCATCTGACTTCTCCAGACTTGGGAAGCAATGGTTGCAAGAGGTGAAAGGCATGGCTGACCGC
 ATCATCAGCATGAGGACCAGCTGGTCTCAACCTGAAGAAAGAGGGCTTTCCCAACTGGCAGCACA
 TCACCGCAGATCGGCATGTTCTGTTTACCGGCCTAAAGCCAGAGCAGGTAGAGCGGCTGACCAAGGA
 GTTCTCGGTCTACATGACAAAGGATGGCCGAATCTCCGTGGCAGGGTACCTCTGGCAATGTGGGCTAC
 CTTGCCCATGCCATTACCAAGGTCACCAAG

ACGCGTACGCGGCCGCTCGAGCAGAACTCATCTCAGAAGAGGATCTGGCAGCAATGATATCCTGGATT
 ACAAGGATGACGACGATAAGGTTTAA

Protein Sequence:

>MR206852 protein sequence
 Red=Cloning site Green=Tags(s)

MALLHSSRILSGMAAFHPGLAAAASARASSWTHVEMGPPDPI LGVTEAFKRDTNSKMMNLGVGAYRDD
 NGKPYVLP SVRKAEAQIAAKNLDKEYLPIGGLAEFCASAEALALGENNEVLKSGRFVTVQTSIGTGALRV
 GASFLQRFFKFSRDVFLPKPSWGNHTPIFRDAGMQLQGYRYDPKTCGFDFSGALEDISKIPEQSVLLH
 ACAHNPTGVDP RPEQWKEIASVVKKNLFAFFDMAYQGFASGDGDKDAWAVRHFIEQGINVCLCQSYAKN
 MGLYGERVGAFTVVKDAEEAKRVESQLKILIRPLYSNPPLNGARIAATILTSPDLRKQWLQEVKGMADR
 IISMRTQLVSNLKEGSSHNWQHITDQIGMFCFTGLKPEQVERLTKESVYMTKDGRI SVAGVTSGNVGY
 LAHAHQVTK

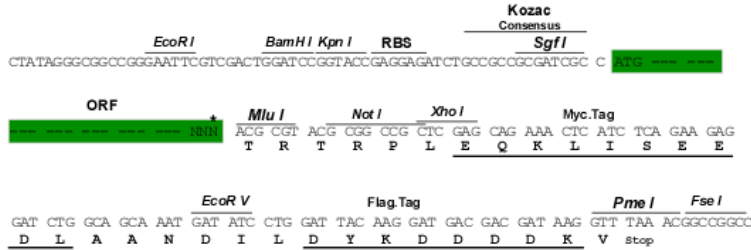
TRTRPLEQKLISEEDLAANDILDYKDDDDKV

Restriction Sites:

SgfI-MluI

Cloning Scheme:

Cloning sites used for ORF Shutting:



* The last codon before the Stop codon of the ORF

ACCN: NM_010325

ORF Size: 1293 bp

OTI Disclaimer: The molecular sequence of this clone aligns with the gene accession number as a point of reference only. However, individual transcript sequences of the same gene can differ through naturally occurring variations (e.g. polymorphisms), each with its own valid existence. This clone is substantially in agreement with the reference, but a complete review of all prevailing variants is recommended prior to use. [More info](#)

OTI Annotation: This clone was engineered to express the complete ORF with an expression tag. Expression varies depending on the nature of the gene.

Components: The ORF clone is ion-exchange column purified and shipped in a 2D barcoded Matrix tube containing 10ug of transfection-ready, dried plasmid DNA (reconstitute with 100 ul of water).

- Reconstitution Method:
1. Centrifuge at 5,000xg for 5min.
 2. Carefully open the tube and add 100ul of sterile water to dissolve the DNA.
 3. Close the tube and incubate for 10 minutes at room temperature.
 4. Briefly vortex the tube and then do a quick spin (less than 5000xg) to concentrate the liquid at the bottom.
 5. Store the suspended plasmid at -20°C. The DNA is stable for at least one year from date of shipping when stored at -20°C.

RefSeq: [NM_010325.3](#)

RefSeq Size: 2345 bp

RefSeq ORF: 1293 bp

Locus ID: 14719

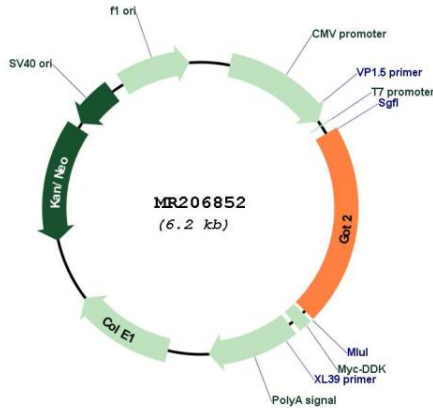
UniProt ID: [P05202](#)

Cytogenetics: 8 47.79 cM

MW: 47.4 kDa

Gene Summary: Catalyzes the irreversible transamination of the L-tryptophan metabolite L-kynurenine to form kynurenic acid (KA). Plays a key role in amino acid metabolism. Important for metabolite exchange between mitochondria and cytosol. Facilitates cellular uptake of long-chain free fatty acids.[UniProtKB/Swiss-Prot Function]

Product images:



Circular map for MR206852