

Product datasheet for **MR206842**

Mab21I3 (NM_172295) Mouse Tagged ORF Clone

Product data:

Product Type:	Expression Plasmids
Product Name:	Mab21I3 (NM_172295) Mouse Tagged ORF Clone
Tag:	Myc-DDK
Symbol:	Mab21I3
Synonyms:	MGC47256
Mammalian Cell Selection:	Neomycin
Vector:	pCMV6-Entry (PS100001)
E. coli Selection:	Kanamycin (25 ug/mL)



[View online »](#)

ORF Nucleotide Sequence:

>MR206842 ORF sequence
 Red=Cloning site Blue=ORF Green=Tags(s)

TTTTGTAATACGACTCACTATAGGGCGGCCGGGAATTCGTCGACTGGATCCGGTACCGAGGAGATCTGCC
 GCC**CGGATCGCC**

ATGGCAGATGAATTCTTCCATGCTGAAAGGAAAAGTGCAGTGAGCAGGCAAGAAGAAGCCAAGTCTCTG
 GTCCACGTTACAAATCCAGAGAAGTTTTATCCAGAGAGTAACGTTGCTGGGAAAGCTACCCACCAGATT
 TGTCTCCATCGGAAAGAAAGCAGAAGGTTGCTGCTATACTGGGGTTGACCAAGAAGCCATGAAGTCT
 CTTCCAGAGGGAGACTTAGACCATTGCCTGCTGAGCAAGGTGGACCTGAGGCGGCAGCAGATTTCTCAGA
 CCATGGAGGAGGTGCAGAAAATCATCCACCTGCTAACCACAGAAAATCAGCCGCCAGGACAGTCGTTTCGA
 AGCCGTGCCTGTCTGACACACACAACGAGAGCATTAAAGTTTTGGCCCCAGCCTCTTCCATGTCACC
 GTCCCACTGAAAGGCCTGCAGGTTACAAGGGGTCCAGAGGCAGCGCTGGCGGTACTACAATGTGCAGG
 GCGCCAAGCTCACCTGCCCTCTGCGGGACCCGAAGGCCTGCAACAGTGGCTGGAGACTGAGATGTTTCAT
 GAAGACCTGTGGCAGTGGCACAAGGCAGATGTGAACATTGAGGGGGACATTGTGCCAGCCAAAGTCTGT
 CAGTTGTTCCGGACGCTGGTGGAAAATGCAGTGAGAACCTGTACCTCTCAGGCAAAGTCACTGTGCTAG
 AAAAACGCACTACGGTTTGGGTTGCCATGGAAACGTCCACAGGCCAGGTGGAGCTGGAGCTGGCCCCAC
 CGTGGAGATCCCCACCACCTGGCCTGAGAAAGCCAGTGGCCTCGGTGTCTGAAGCGATGGCCTTCCCCA
 GAGAGAGTGGAGTGCATCAAGTCTTTGGGTTAACTTGGTGGCCAGTCCGCCTATCACTGGCAGCTGA
 GTTTCTCCAGGCAGAGCAGGTGCTGTTGAGCAGCTGGACGAGGATGGAGGCTGCCGAGGCAATGCTT
 TCAGGTCTGAGGCAGCTGAAGGAGGATGTGTGGTGTCCAGGGAGGAGGCCAGTCATCACCCACCAC
 CTGCAGACCGTGTCTTCTGGACTTGTGAGAAAATACCCACCTCAAGGATTGGCAGGTCTTCCATCAAG
 CCCTCTGCACCTTGTCCGGAAGCTGCACAGGTGTGTGAGCCAGCACTTCTGAAGCACTATTTTGTTC
 AAAGAGCAACCTCCTTCAGTCAGCTAACCCAAGCGAGCTGGATGCGGTGGCCAGAAAGTGGCCTTTTTC
 CTAAGAACCAGGTTGAGCTGCC

ACGCGTACGCGGCCGCTCGAGCAGAAACTCATCTCAGAAGAGGATCTGGCAGCAAATGATATCCTGGATT
 ACAAGGATGACGACGATAAGGTTTAA

Protein Sequence:

>MR206842 protein sequence
 Red=Cloning site Green=Tags(s)

MADEFFHAGKENCSEQARRSQVSGPRSQFQRSFIQRVTLGLKLPTRFVLRERKQKVAAILGVDQEAMKS
 LPEGDLHDHLLSKVDLRRQQISQTMEEVQKIIHLLTTEISRQDSRFEAVPVSDTHNESIKVLAPSLFHVT
 VPLKGLAGYKGVQRQRWRYYNVQAKLTCPLRDPEGLQQWLETEMFMKTLWQWHKADVNIIEGDIVPAKVL
 QLFRTLVENAVRTCHLSGKVTVLEKRTTVVWAMETSTGQVELELAPTVEIPTTWPEKAQWPRCLKRWPS
 ERVECIKSFQFNLVASAYHWQLSFSQAEQVLFQLEDEGGCRRQCFQVLRQLKEDVWCPGRRPVIITHH
 LQTVLFWTCEKYPHLKDQVVFHQALLHLVRKLRVCSQHFLKHYFVPSNLLQSANPSELDAVAQKVAFF
 LKNPQVELP

TRTRPLEQKLISEEDLAANDILDYKDDDDKV

Restriction Sites:

SgfI-MluI

Cloning Scheme:


ACCN: NM_172295

ORF Size: 1290 bp

OTI Disclaimer: The molecular sequence of this clone aligns with the gene accession number as a point of reference only. However, individual transcript sequences of the same gene can differ through naturally occurring variations (e.g. polymorphisms), each with its own valid existence. This clone is substantially in agreement with the reference, but a complete review of all prevailing variants is recommended prior to use. [More info](#)

OTI Annotation: This clone was engineered to express the complete ORF with an expression tag. Expression varies depending on the nature of the gene.

Components: The ORF clone is ion-exchange column purified and shipped in a 2D barcoded Matrix tube containing 10ug of transfection-ready, dried plasmid DNA (reconstitute with 100 ul of water).

Reconstitution Method:

1. Centrifuge at 5,000xg for 5min.
2. Carefully open the tube and add 100ul of sterile water to dissolve the DNA.
3. Close the tube and incubate for 10 minutes at room temperature.
4. Briefly vortex the tube and then do a quick spin (less than 5000xg) to concentrate the liquid at the bottom.
5. Store the suspended plasmid at -20°C. The DNA is stable for at least one year from date of shipping when stored at -20°C.

RefSeq: [NM_172295.1](#)

RefSeq Size: 3558 bp

RefSeq ORF: 1290 bp

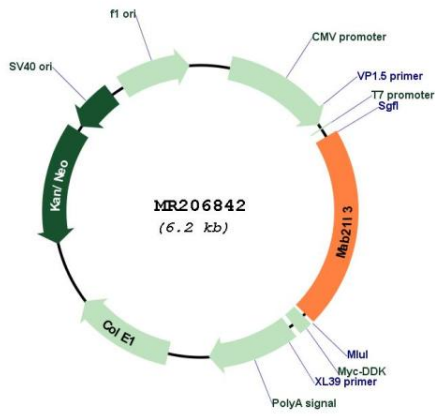
Locus ID: 242125

UniProt ID: [Q8CI17](#)

Cytogenetics: 3 F2.2

MW: 49.8 kDa

Product images:



Circular map for MR206842