

## Product datasheet for **MR206824**

### Smyd3 (NM\_027188) Mouse Tagged ORF Clone

#### Product data:

Product Type:	Expression Plasmids
Product Name:	Smyd3 (NM_027188) Mouse Tagged ORF Clone
Tag:	Myc-DDK
Symbol:	Smyd3
Synonyms:	2410008A19Rik; Zmynd1
Mammalian Cell Selection:	Neomycin
Vector:	pCMV6-Entry (PS100001)
E. coli Selection:	Kanamycin (25 ug/mL)



[View online »](#)

**ORF Nucleotide Sequence:**

>MR206824 ORF sequence  
 Red=Cloning site Blue=ORF Green=Tags(s)

TTTTGTAATACGACTCACTATAGGGCGGCCGGAATTCGTCGACTGGATCCGGTACCGAGGAGATCTGCC  
 GCC**CGCATCGCC**

ATGGAGGCACTGAAGGTGAAAAGTTACGACTGCCAACCGGGAAACGGCTGCGTGCTGTGGCTCCAC  
 TGC GCCCGGGGAGCTGCTCTCCGCTCCGACCCCTGGCTTACACTGTGTGCAAGGGGAGTCGTGGCGT  
 AGTCTGTGATCGCTGCCTACTGGGAAGGAGAAGCTGATGCGTTGTTCTCAATGCCGAATTGCCAAATAC  
 TGCAGTGCCAAGTGTGAGAAAAAGCCTGGCCGGACCACAGACGGGAATGCAGTTGTCTTAAAAGCTGCA  
 AGCCAGATATCCGCCGACTCCGTGAGACTTCTGGCAGGGTTATCGTCAAGCTGATGGATGAAAAGCC  
 CTCAGAGTCAGAGAACTTTATTCATTTTATGATCTGGAGTCCAATATTAGCAAACCTCACTGAAGATAAG  
 AAAGAGGGCCTGAGGCAACTTGAATGACTTTTCAACATTTTCATGAGAGAGGAGATCCAGGATGCGTCTC  
 AGCTGCCGCTTCTTTTACCTTTTGAAGCCTTTGCAAAAAGTGTCTGCAATTCGTTCACTATCTGCAA  
 CGCGGAGATGCAGGAGGTCGGCGTTGGCCTGTACCCAGTATGTCTTTGCTGAATCACAGCTGTGACCCC  
 AACTGCTCCATCGTATTCACCGGCCCCACCTTCTACTGCGTGCAGTGGCGGAAATTGAAGCAGGAGAGG  
 AGCTCACCATCTGCTACCTGGACATGCTGATGACCAGCGAGGAACGCCGGAAGCAGCTGAGGGACCAGTA  
 CTGCTTTGAGTGTGACTGCATCCGATGCCAAACCCAGGACAAGGATGCTGACATGCTAACGGGTGACGAG  
 CAAATATGGAAGGAGGTTCAAGAGTCGTAAGAAAATCGAAGAGCTGAAGGCGCACTGGAAGTGGGAGC  
 AGGTTCTGGCGCTGTGCCAGGCGATCATAAACAGCAATTCACACCGGCTTCCCGACATCAACATCTACCA  
 GCTGAAGTGTCTGACTGTGCCATGGATGCCTGCATCAACCTGGGGATGCTGGAGGAGGCGTTGTTCTAC  
 GCCATGCCACCATGGAGCCGTACCGGATTTTTTCCCTGGAAGCCATCCCGTCAGAGGTGTGCAAGTGA  
 TGAAGTTGGCAAGCTGCAGCTCCATCAAGGCATGTTTCTCAAGCCATGAAGAACCTGAGGCTGGCCTT  
 TGACATTATGAAAGTGACCCACGCGGAGAGCACAGCCTGATTGAAGATTGATTCTTCTCTCTGGAAGAA  
 TGTGATGCCAACATACGAGCCTCC

**ACGCGT**ACGCGGCCGCTCGAGCAGAACTCATCTCAGAAGAGGATCTGGCAGCAAATGATATCCTGGATT  
 ACAAGGATGACGACGATAAGGTTTAA

**Protein Sequence:**

>MR206824 protein sequence  
 Red=Cloning site Green=Tags(s)

MEALKVEKFTTANRGNLRAVAPLRPGELLFRSDPLAYTVCKGSRGVVCDRLLGKEKLMRCSQCRIAKY  
 CSAKQCQKAWPDHRRECSCLKSCKPRYPDSVRLGRVIVKLMDEKPESEKLYSYFDLESNISKLTEDK  
 KEGLRQLAMTFQHFMRREEIQDASQLPPSFDLFEAFKVICNSFTICNAEMQEVGVL YPSM LLNHSCDP  
 NCSIVFNPHLLLRAVREIEAGEELTICYLDMLMTSEERRKQLRDQYCFECDCIRCQTQDKDADMLTGDE  
 QIWKEVQESLKKIEELKAHWKWEQVLALCQAIINSNSNRLPDINIYQLKVLDCAMDACINLGMLEALFY  
 AMRTMEPYRIFFPGSHPVRGVQVMKVGLQLHQGMFPQAMKNLRLAFDIMKVTHGREHSLIEDLILLLLEE  
 CDANIRAS

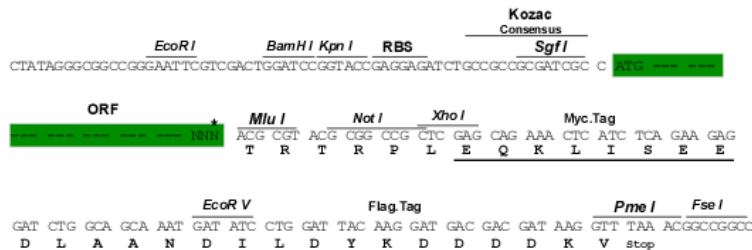
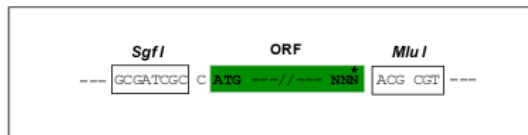
**TR**TRPLEQKLISEEDLAANDILDYKDDDDKV

**Restriction Sites:**

SgfI-MluI

**Cloning Scheme:**

Cloning sites used for ORF Shutting:



\* The last codon before the Stop codon of the ORF

**ACCN:** NM\_027188

**ORF Size:** 1287 bp

**OTI Disclaimer:** The molecular sequence of this clone aligns with the gene accession number as a point of reference only. However, individual transcript sequences of the same gene can differ through naturally occurring variations (e.g. polymorphisms), each with its own valid existence. This clone is substantially in agreement with the reference, but a complete review of all prevailing variants is recommended prior to use. [More info](#)

**OTI Annotation:** This clone was engineered to express the complete ORF with an expression tag. Expression varies depending on the nature of the gene.

**Components:** The ORF clone is ion-exchange column purified and shipped in a 2D barcoded Matrix tube containing 10ug of transfection-ready, dried plasmid DNA (reconstitute with 100 ul of water).

**Reconstitution Method:**

1. Centrifuge at 5,000xg for 5min.
2. Carefully open the tube and add 100ul of sterile water to dissolve the DNA.
3. Close the tube and incubate for 10 minutes at room temperature.
4. Briefly vortex the tube and then do a quick spin (less than 5000xg) to concentrate the liquid at the bottom.
5. Store the suspended plasmid at -20°C. The DNA is stable for at least one year from date of shipping when stored at -20°C.

**RefSeq:** [NM\\_027188.4](#)
**RefSeq Size:** 3769 bp

**RefSeq ORF:** 1287 bp

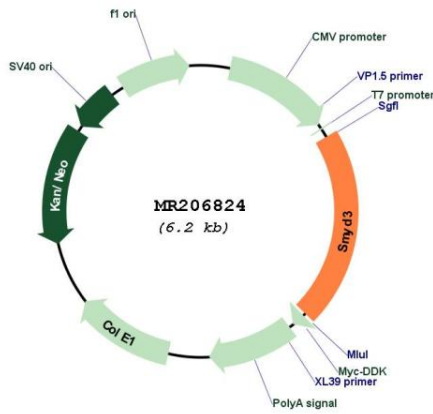
**Locus ID:** 69726

**UniProt ID:** [Q9CWR2](#)
**Cytogenetics:** 1 83.48 cM

**MW:** 49.1 kDa

**Gene Summary:** Histone methyltransferase. Specifically methylates 'Lys-4' of histone H3, inducing di- and tri-methylation, but not monomethylation. Also methylates 'Lys-5' of histone H4. Plays an important role in transcriptional activation as a member of an RNA polymerase complex. Binds DNA containing 5'-CCCTCC-3' or 5'-GAGGGG-3' sequences.[UniProtKB/Swiss-Prot Function]

**Product images:**



Circular map for MR206824