

## Product datasheet for **MR206799**

### Stk25 (NM\_021537) Mouse Tagged ORF Clone

#### Product data:

Product Type:	Expression Plasmids
Product Name:	Stk25 (NM_021537) Mouse Tagged ORF Clone
Tag:	Myc-DDK
Symbol:	Stk25
Synonyms:	1500019J11Rik; AU018434; C86992; Ste20-like; Ysk1
Mammalian Cell Selection:	Neomycin
Vector:	pCMV6-Entry (PS100001)
E. coli Selection:	Kanamycin (25 ug/mL)



[View online »](#)

ORF Nucleotide  
Sequence:

>MR206799 ORF sequence  
Red=Cloning site Blue=ORF Green=Tags(s)

TTTTGTAATACGACTCACTATAGGGCGGCCGGGAATTCGTCGACTGGATCCGGTACCGAGGAGATCTGCC  
GCCGCGATCGCC

ATGGCTCACCTCCGGGGCTTCGCGCACCAGCATTCTCGTGTGGACCCAGAGGAACCTTCCACCAAGCTTG  
ACCGCATTGGCAAAGGCTCATTTGGGGAGGTGTACAAGGGGATCGACAACCACACCAAGGAAGTGGTGGC  
CATCAAGATCATTGACTTGAAGAGGCCGAGGATGAAATTGAGGACATCCAACAGGAGATCACTGTGCTC  
AGCCAATGTGACAGTCCTTATATCACCCGCTACTTCGGCTCCTACCTGAAGAGCACCAAGCTGTGGATTA  
TCATGGAGTACCTGGTGGTGGCTCTGCACTGGACTTGCTGAAACCTGGTCCCCTGGAAGAGACCTATAT  
TGCCACCATCTTGCGGGAGATCCTGAAAGGCTGGATTATCTGCACTCAGAGCGCAAGATCCACCGAGAT  
ATCAAAGCTGCCAACGTGCTGCTCTCGGAGCAGGGTGTGTGAAGCTGGCAGACTTCGGTGTGGCTGGGC  
AGCTCACAGACACAAAATCAAGAGGAACACATTTGTGGGTACACCTTCTGGATGGCACCTGAGGTTAT  
CAAGCAGTCGGCCTATGACTTCAAGGCTGACATCTGGTCCCTGGGCATCAGACCATTGAGCTGGCCAAG  
GGGAGCCGCAAACCTCTGATCTCCACCCTATGCGAGTCCCTGTTCTGATTCCCAAGAACAACCCACCCA  
CATTGGAGGGCCACCACAGCAAACCTTCAAGGAGTTTGTAGAGGCTGCCTCAATAAGGACCCACGATT  
CCGACCCACTGCCAAGGAGCTCCTGAAGCACAATTCATCACACGATACACCAAGAAGACCTCCTTTCTC  
ACTGAACCTATTGACCGATATAAGCGCTGGAAGTCTGAGGGGCATGGAGAGGAGTCCAGTTCTGAGGATT  
CTGACATTGATGGCGAGGCTGAGGATGGGGAGCAGGGTCCCATCTGGACGTTTCTCCAACCATCCGGCC  
AAGTCCACATAGCAAGCTGCACAAGGAACTGCTCTGCACAGCTCACAGAAGCCTGCAGAGCCTATCAAG  
AGACAGCCAAGGTCCCAGTGTGTCCACACTAGTCCGTCCTGTCTTTGGAGAGCTCAAAGAGAAGCACA  
AGCAGAGCGGTGGGAGCGTGGGTGCCCTGGAGGAGCTAGAGAATGCCTTCAGCCTGGCTGAGGAATCCTG  
TCCTGGCATCTCAGACAAGCTGATGGTGCACCTGGTGGAGCGTGTGCAGAGGTTCTCACACAGCAGGAAC  
CACCTGACATCTACCCGC

ACGCGTACGCGGCCGCTCGAGCAGAACTCATCTCAGAAGAGGATCTGGCAGCAAATGATATCCTGGATT  
ACAAGGATGACGACGATAAGGTTTAA

## Protein Sequence:

>MR206799 protein sequence  
Red=Cloning site Green=Tags(s)

MAHLRGF AHQHSRVDPEELFTKLDRIKGSFGEVYKIDNHTKEVVAIKIIDLEEADEIEDIQQEITVL  
SQCDSPYITRYFGSYLKSTKLWIIMEYLGGSALDLLKPGPLEETYIATILREILKGLDYLHSEKIH  
IKAAVLLSEQGDVKLADFGVAGQLTDTQIKRNTFVGTFFWMAPEVIKQSAYDFKADIWSLGITAI  
ELAKGEPPNSDLHPMRVLFIPKNNPPTLEGHHSKPFKEFVEACLNDPRFRPTAKELLKHKFITRY  
TKTSFLTELIDRYKRKSEGHGEESSSESDIDGEAEDGEQGP IWTFPPTIRSPHSLKHKGTALHSS  
QKPAEPIK RQPRSQCLSTLVRPVFGELKEKHKQSGGSVGALEEL ENAFSLAEESCPGISDKLMVHL  
VERVQRF SHSRN HLTSTR

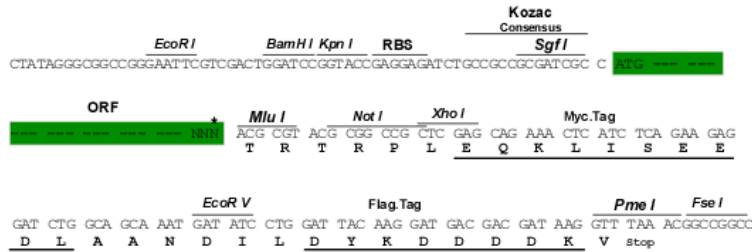
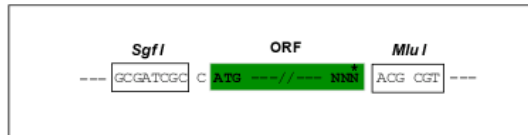
TRTRPLEQKLISEEDLAANDILDYKDDDDKV

## Restriction Sites:

Sgfl-MluI

**Cloning Scheme:**

Cloning sites used for ORF Shutting:



\* The last codon before the Stop codon of the ORF

**ACCN:** NM\_021537

**ORF Size:** 1281 bp

**OTI Disclaimer:** The molecular sequence of this clone aligns with the gene accession number as a point of reference only. However, individual transcript sequences of the same gene can differ through naturally occurring variations (e.g. polymorphisms), each with its own valid existence. This clone is substantially in agreement with the reference, but a complete review of all prevailing variants is recommended prior to use. [More info](#)
**OTI Annotation:** This clone was engineered to express the complete ORF with an expression tag. Expression varies depending on the nature of the gene.

**Components:** The ORF clone is ion-exchange column purified and shipped in a 2D barcoded Matrix tube containing 10ug of transfection-ready, dried plasmid DNA (reconstitute with 100 ul of water).

**Reconstitution Method:**

1. Centrifuge at 5,000xg for 5min.
2. Carefully open the tube and add 100ul of sterile water to dissolve the DNA.
3. Close the tube and incubate for 10 minutes at room temperature.
4. Briefly vortex the tube and then do a quick spin (less than 5000xg) to concentrate the liquid at the bottom.
5. Store the suspended plasmid at -20°C. The DNA is stable for at least one year from date of shipping when stored at -20°C.

**RefSeq:** [NM\\_021537.3](#), [NP\\_067512.3](#)
**RefSeq Size:** 3254 bp

**RefSeq ORF:** 1281 bp

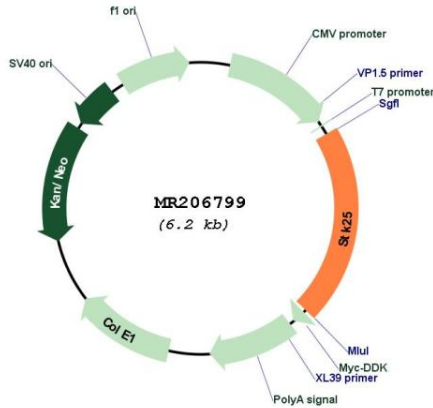
**Locus ID:** 59041

**UniProt ID:** [Q9Z2W1](#)
**Cytogenetics:** 1 47.25 cM

MW: 48.2 kDa

Gene Summary: Oxidant stress-activated serine/threonine kinase that may play a role in the response to environmental stress. Targets to the Golgi apparatus where it appears to regulate protein transport events, cell adhesion, and polarity complexes important for cell migration (By similarity).[UniProtKB/Swiss-Prot Function]

Product images:



Circular map for MR206799