

Product datasheet for **MR206793**

Syt6 (BC065065) Mouse Tagged ORF Clone

Product data:

Product Type:	Expression Plasmids
Product Name:	Syt6 (BC065065) Mouse Tagged ORF Clone
Tag:	Myc-DDK
Symbol:	Syt6
Synonyms:	3110037A08Rik; AW048930; sytVI
Mammalian Cell Selection:	Neomycin
Vector:	pCMV6-Entry (PS100001)
E. coli Selection:	Kanamycin (25 ug/mL)



[View online »](#)

ORF Nucleotide Sequence:

>MR206793 ORF sequence
 Red=Cloning site Blue=ORF Green=Tags(s)

TTTTGTAATACGACTCACTATAGGGCGGCCGGGAATTCGTCGACTGGATCCGGTACCGAGGAGATCTGCC
 GCC**CGGATCGCC**

ATGCCCTGGAGGAAGAAAGAGGCCCTCCAGCCCTTCTTCTGCTAACCTGCTTCAGAGACTCTCCAGAGCC
 CCAGCTCCAGAGGCAACATGGCGGATAAGCTGAAGGACCCAGTGCCCTGGGCTTCTGGAGGCAGCTGT
 GAAGATCAGCCACACTTCCCCAGACATCCAGCCGAGGTGCAGATGTCGGTCAAAGAGCACATCATGCGC
 CACACAAAGCTGCAGCGACAGACCAGAGCCAGCATCCTCCACCAGGCACACATCCTTCAAGCGCCACC
 TGCCACGACAGATGCATGTCTCCAGCGTGGACTATGGCAATGAGCTGCCGCCGGCTGCCGCCGAGCAGCC
 CACCAGTATTGGCCGTATCAAGCCTGAGCTTTACAAGCAGAAGTCAGTGGATGGGGATGATGCCAAGTCG
 GAGGCCGCAAGAGCTGTGGGAAGATCACTTCAGCCTCCGCTATGACTATGAAAGCGAGACGCTGATTG
 TCGCATCCTGAAGGCCCTTACCTCCCTGCCAAGGACTTTTGGCGAAGTCTGACCCTTATGTTAAGAT
 CTACCTCTGCCTGACCGCAAGTCAAGCTGCAGACCCGGGTGCACCGCAAGACCCTGAACCCACCTTT
 GATGAGAACTTCCACTTCCCCGTGCCCTACGAGGAGCTGGCTGACCGCAAGCTGCATCTCAGTGTCTTTG
 ACTTTGACCGCTTCTCCCGCCATGACATGATTGGGGAGGTCATCCTGGACAATCTCTTTGAGGCCTCTGA
 CCTGTCCCGGGAGACCTCCATCTGGAAGGACATCCAGTACGCTACTAGTAAAAGTGTGGACTTGGGAGAG
 ATCATGTTCTCCCTCTGTACTCTGCCACAGCAGGCAGGCTCACCTCACAGTATCAAGTGTGCAAAATC
 TCAAAGCAATGGACATCACAGGCTACTCAGATCCCTACGTCAAAGTATCCCTACTGTGTGATGGACGGAG
 GCTGAAAAAGAAGAAAACGACCATAAAAAAGAACCCTAAACCCCATCTACAACGAGGCCATCATCTTT
 GACATCCCCCAGAAAACATGGACCAAGTGAAGCTGCTCATCTCCGTTATGGACTATGATAGAGTTGGCC
 ACAACGAGATCATAGGAGTCTGTAGAGTGGGGATCAATGCTGAAGGCCTTGGCAGGGACCCTGGAATGA
 GATGTTGGCGTACCCACGAAAGCCATTGCGCACTGGCACTCCTTGGTGGAGTAAAGAAATCCTTCAA
 GAGGGGACCCCTCGTTG

ACGCGTACGCGGCCGCTCGAGCAGAACTCATCTCAGAAGAGGATCTGGCAGCAAATGATATCCTGGATT
 ACAAGGATGACGACGATAAGGTTTAA

Protein Sequence:

>MR206793 protein sequence
 Red=Cloning site Green=Tags(s)

MPWRKKEASSPSSANPASETLQSPSSRGNMADKLDPSALGFLEAAVKISHTSPDIPAQVQMSVKEHIMR
 HTKLQRQTTEPASSTRHTSFKRHLPRQMHVSSVDYGNELPPAAAEQPTSIGRIKPELYKQKSVDDDAKS
 EAAKSCGKINFLRYDYESETLIVRILKAFDLPKDFCGSSDPYVKIYLLPDRKCKLQTRVHRKTLNPTF
 DENFHFPVPEELADRKLHLSVDFDRFSRHDMI GEVILDNLFEASDLRETSIWKDIQYATSESVDLGE
 IMFSLCYLPTAGRLTLTVIKRNLKAMDITGYSDPYVKVSLLCDGRRLKTKKTTIKKNTLNPIYNEAIIIF
 DIPPENMDQVSLLSVMDYDRVGHNEIIGVCRVGINAEGLGRDHWNEMLAYPRKPIAHWHSLVEVKKSKF
 EGTURL

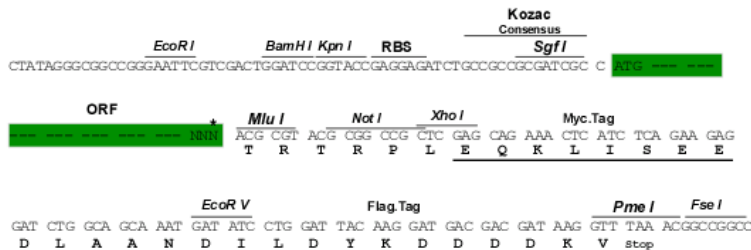
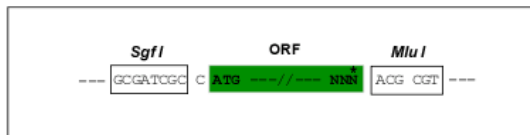
TRTRPLEQKLISEEDLAANDILDYKDDDDKV

Restriction Sites:

SgfI-MluI

Cloning Scheme:

Cloning sites used for ORF Shutting:



* The last codon before the Stop codon of the ORF

ACCN: BC065065

ORF Size: 1278 bp

OTI Disclaimer: The molecular sequence of this clone aligns with the gene accession number as a point of reference only. However, individual transcript sequences of the same gene can differ through naturally occurring variations (e.g. polymorphisms), each with its own valid existence. This clone is substantially in agreement with the reference, but a complete review of all prevailing variants is recommended prior to use. [More info](#)
OTI Annotation: This clone was engineered to express the complete ORF with an expression tag. Expression varies depending on the nature of the gene.

Components: The ORF clone is ion-exchange column purified and shipped in a 2D barcoded Matrix tube containing 10ug of transfection-ready, dried plasmid DNA (reconstitute with 100 ul of water).

Reconstitution Method:

1. Centrifuge at 5,000xg for 5min.
2. Carefully open the tube and add 100ul of sterile water to dissolve the DNA.
3. Close the tube and incubate for 10 minutes at room temperature.
4. Briefly vortex the tube and then do a quick spin (less than 5000xg) to concentrate the liquid at the bottom.
5. Store the suspended plasmid at -20°C. The DNA is stable for at least one year from date of shipping when stored at -20°C.

RefSeq: [BC065065](#), [AAH65065](#)
RefSeq Size: 4393 bp

RefSeq ORF: 1280 bp

Locus ID: 54524

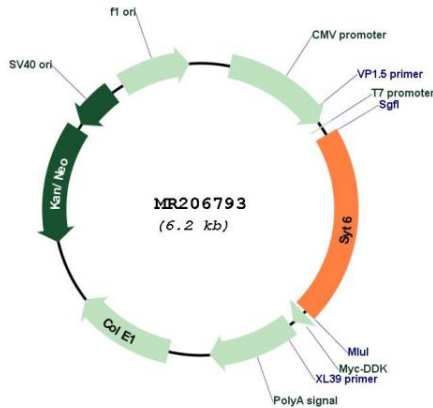
Cytogenetics: 3 F2.2

MW: 48.3 kDa

Gene Summary:

May be involved in Ca(2+)-dependent exocytosis of secretory vesicles through Ca(2+) and phospholipid binding to the C2 domain or may serve as Ca(2+) sensors in the process of vesicular trafficking and exocytosis (By similarity). May mediate Ca(2+)-regulation of exocytosis in acrosomal reaction in sperm (PubMed:15774481).[UniProtKB/Swiss-Prot Function]

Product images:



Circular map for MR206793